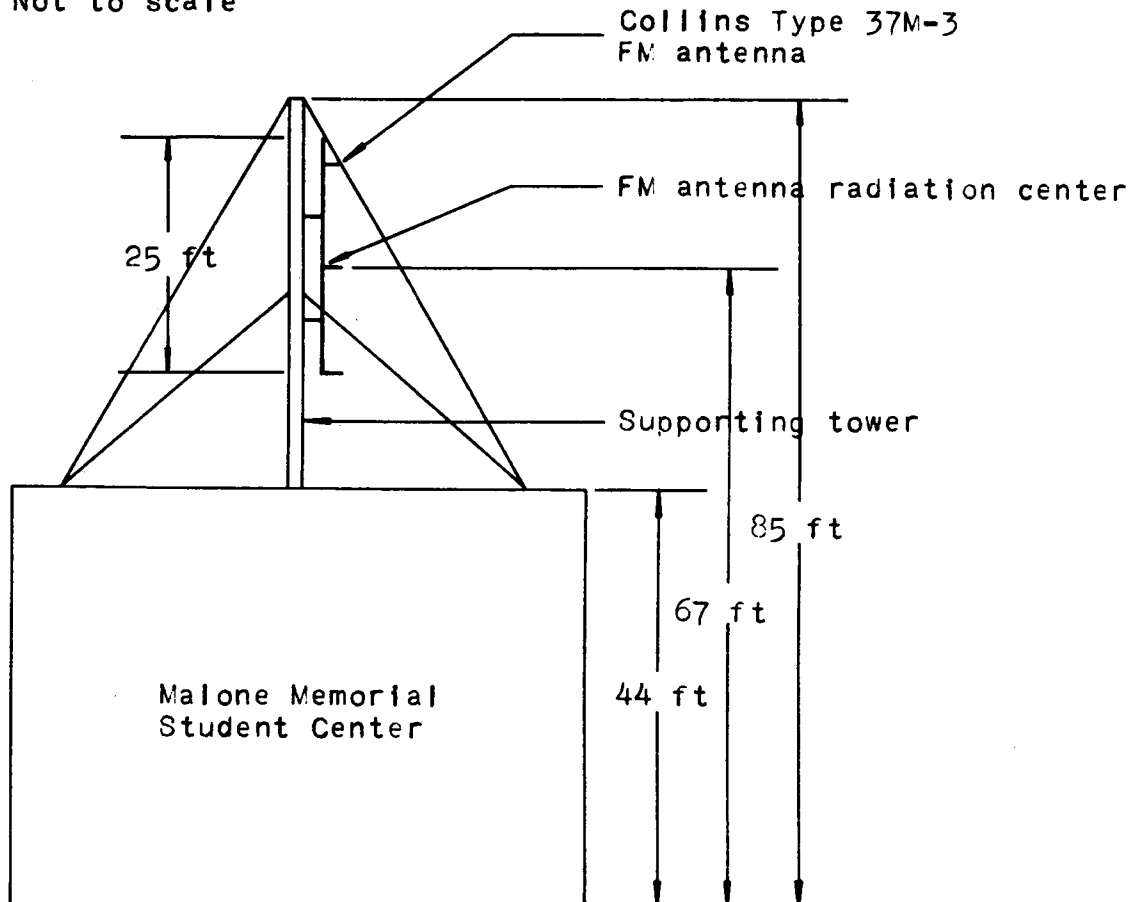


Not to scale



Ground elevation 137 feet
above mean sea level.

Tower to be painted and
lighted in accordance with
FAA and FCC specifications.

EXHIBIT V-B-1

Vertical Plan Sketch
of Antenna Structure

KXLU
Loyola University of Los Angeles
Los Angeles, California

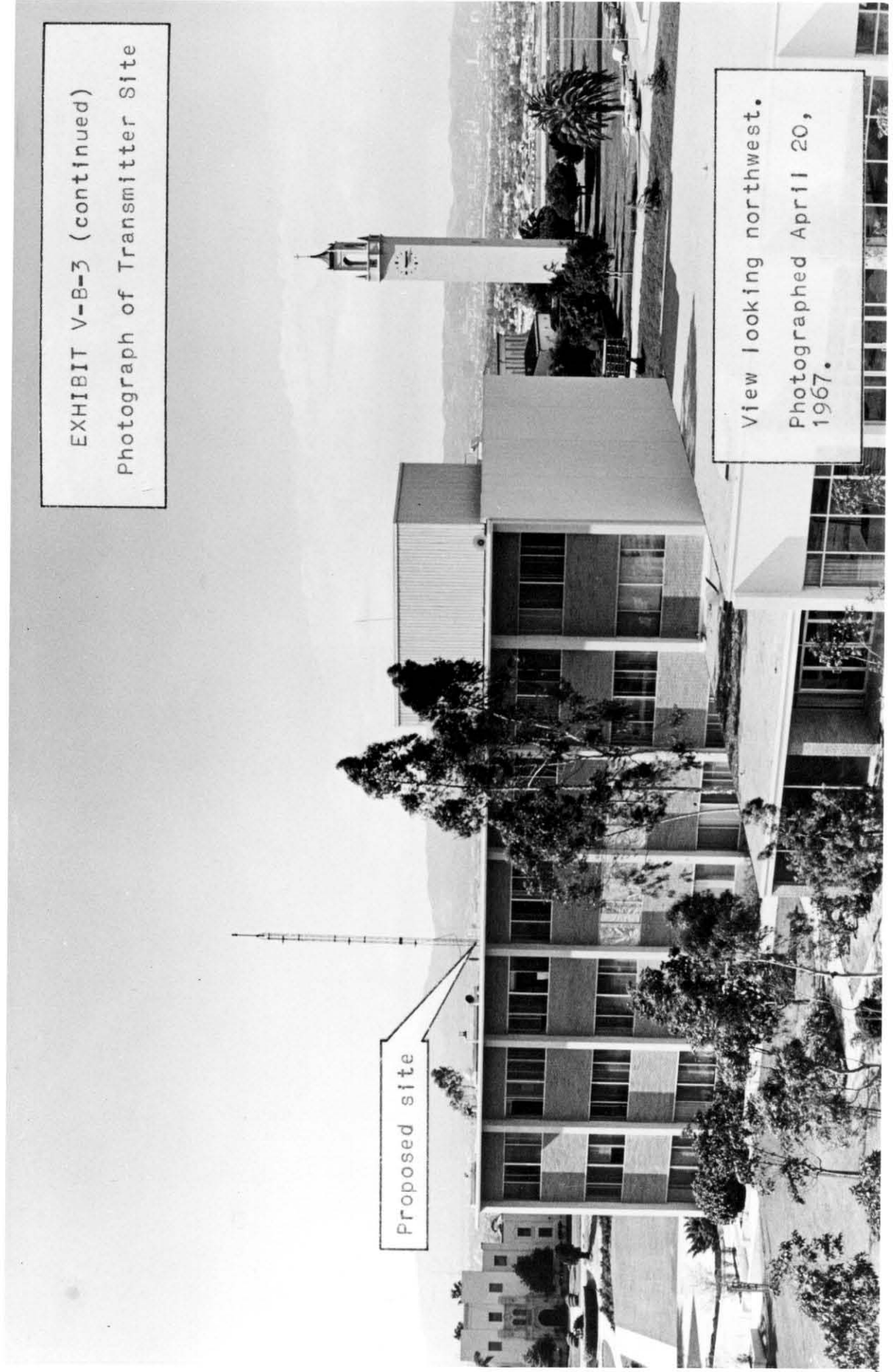
July 1967

Fred W. Volken
Engineering Consultant
Sierra Madre, California

EXHIBIT V-B-3 (continued)
Photograph of Transmitter Site

Proposed site

View looking northwest.
Photographed April 20,
1967.



DEPARTMENT OF TRANSPORTATION
FEDERAL AVIATION ADMINISTRATION
LOS ANGELES AREA OFFICE
5885 W. IMPERIAL HIGHWAY
LOS ANGELES, CALIFORNIA 90045

March 20, 1968

IN REPLY
REFER TO: LAX-OE-67-379

Mr. Vincent R. Talbot
Chief Engineer, FM Station KXLU
7101 West 80th Street
Los Angeles, California 90045

Dear Mr. Talbot:

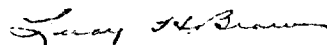
On October 17, 1967, we evaluated your proposal to erect an antenna on the Loyola University's Los Angeles campus at a height of 85 feet. Because the antenna site is shielded by the University campanile tower from Hughes Airport and is beyond the distance criteria of standards applicable to Los Angeles International Airport, we advised you that you were not, under the shielding exemptions of Federal Aviation Regulations, Part 77, Section 77.15(a), required to file FAA Form 117, Notice of Proposed Construction, relative to this antenna.

You now propose to increase the antenna height to 95 feet above ground level, a 10-foot increase. This is to confirm that you are still not required to file notice at the new height, since the campanile tower is 30 feet higher than the newly proposed antenna height.

We are forwarding a copy of this determination to the Federal Communications Commission. You may prefer to include a copy with your license application too.

This determination does not waive the requirements of any other governmental agency.

Sincerely yours,



Leroy H. Brown
Airspace Project Officer
Air Traffic Branch