

LAW OFFICE OF

JOHN WELLS KING, PLLC

4051 SHOAL CREEK LANE EAST
JACKSONVILLE, FLORIDA 32225-4792

TELEPHONE: (904) 647-9610
MOBILE: (904) 412-2801
EMAIL: john@jwkinglaw.com

MEMBER, DISTRICT OF COLUMBIA BAR
NOT ADMITTED IN FLORIDA
PRACTICE LIMITED TO FEDERAL AGENCIES

November 19, 2018

BY EXPRESS MAIL

Marlene H. Dortch, Secretary
Federal Communications Commission
445 12th Street, SW
Washington DC 20554

RE: Rhode Island Public Radio
AM Broadcast Station WRPA
Facility ID No. 48308
Providence, Rhode Island

ATTENTION: Son Nguyen, Audio Division, Media Bureau

SUBJECT: Corrected License with Revised Description of Monitor Points

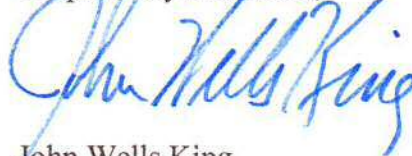
Dear Ms. Dortch:

On behalf of Rhode Island Public Radio, licensee of AM Broadcast Station WRPA, Facility ID No. 48308, Providence, Rhode Island, and pursuant to Section 73.158(b) of the Commission's rules, I respectfully request that the Commission issue a corrected license for the station, incorporating the enclosed revised description of monitor points.

The description as shown on the station license is no longer correct due to changes in the vicinity of the monitor points. There are no changes in the location of the monitor points.

Kindly communicate any questions directly to this office.

Respectfully submitted,

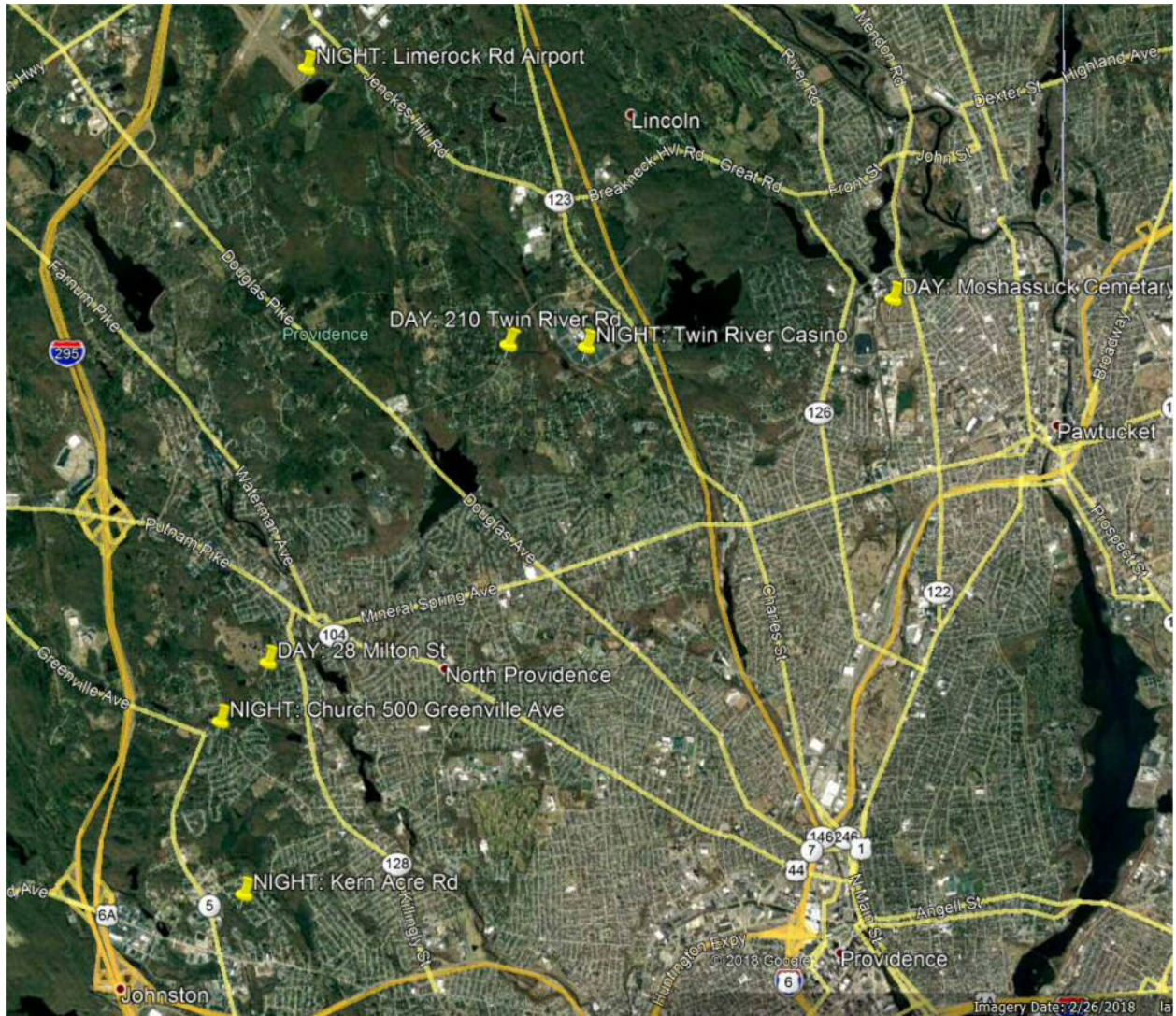


John Wells King

JWK/

Enclosures (in triplicate)

WRPA 1290AM PROVIDENCE: MONITOR POINTS



Recommended Order & Addresses for GPS Driving Navigation

1. **Moshassuck Cemetary:** 978 Lonsdale Ave / Central Falls RI 02863
2. **Twin River Casino:** 100 Twin River Rd / Lincoln RI 02865
3. **House:** 210 Twin River Rd / Lincoln RI 02865
4. **Airport:** ~160 Limerock Rd / Smithfield RI 02917
5. **House:** 28 Milton St / Johnston RI 02919
6. **King's Tabernacle Church:** 500 Greenville Ave / Johnston RI 02919
7. **Road End:** 23 Kern Acre Dr / Johnston RI

WRPA 1290AM PROVIDENCE: MONITOR POINTS

Monitor Point 1 : Moshassuck Cemetary

978 Lonsdale Ave / Central Falls RI

41-52-25.37 N 71-24-21/62 W

Day Pattern Point

Azimuth: 39.5° true

Radial Point Number: 5

Distance to Antenna: 4.97km

Day-DA Field Strength: 22.5 mV/m

Maximum Reading: 26.41 mV/m

Location Description

The point is in the cemetary. Enter off Lonsdale Ave and bear right, then take an immediate left. Go past an island in the road, then take the third left turn (south). Go halfway down the road. The monitor point is on the pavement, halfway between the large Pierson Hall headstone on your right (west), and the small (half-buried) Shore headstone on your left (east).



Photo from Oct.2018

WRPA 1290AM PROVIDENCE: MONITOR POINTS

Monitor Point 2 : Twin River Casino (SW Parking Lot)

100 Twin River Rd / Lincoln RI

41-53-07.22 N 71-26-54.47 W

Night Pattern Point

Azimuth: 353.5° true

Radial Point Number: 1

Distance to Antenna: 3.38km

Night-DA Field Strength: 6.3 mV/m

Maximum Reading: 7.55 mV/m

Location Description

Enter Twin River Casino from Louisquisset Pike (aka SR-246) onto Paul St, the perimeter road around the Casino parking lots. Take the third right into the parking lot, then the fifth left into the rows of spaces. Go to the end, looking for the light pole with a sign **WEST 12** on it. The point is the fifth spot from the light pole, near the storm drain.



Photo from Oct.2018

WRPA 1290AM PROVIDENCE: MONITOR POINTS

Monitor Point 3 : House

210 Twin River Rd / Lincoln RI

41-53-07.24 N 71-27-32.64 W

Day Pattern Point

Azimuth: 339° true

Radial Point Number: 1

Distance to Antenna: 3.54km

Day-DA Field Strength: 27 mV/m

Maximum Reading: 7.55 mV/m

Location Description

Point is located at a residential address, where the house's driveway meets the road. It's centered between the brick driveway markers, and centered on the edge of the road pavement.



Photo from Feb.2003

WRPA 1290AM PROVIDENCE: MONITOR POINTS

Monitor Point 4 : Airport

~160 Limerock Rd / Smithfield RI

41-54-50.55 N 71-29-14.57 W

Night Pattern Point

Radial Point Number: 2

Azimuth: 330.5° true

Night-DA Field Strength: 1.55 mV/m

Distance to Antenna: 7.35km

Maximum Reading: 1.6 mV/m

Location Description

Point is located on Limerock Rd at the end of the runway for North Central Airport, near the chain link fence gate. Address above is approximate as there is no building at this location.



Photo from Oct.2018

WRPA 1290AM PROVIDENCE: MONITOR POINTS

Monitor Point 5 : House

28 Milton St / Johnston RI

41-51-09.68 N 71-29-33.42 W

Day Pattern Point

Azimuth: 265° true

Radial Point Number: 4

Distance to Antenna: 7.35km

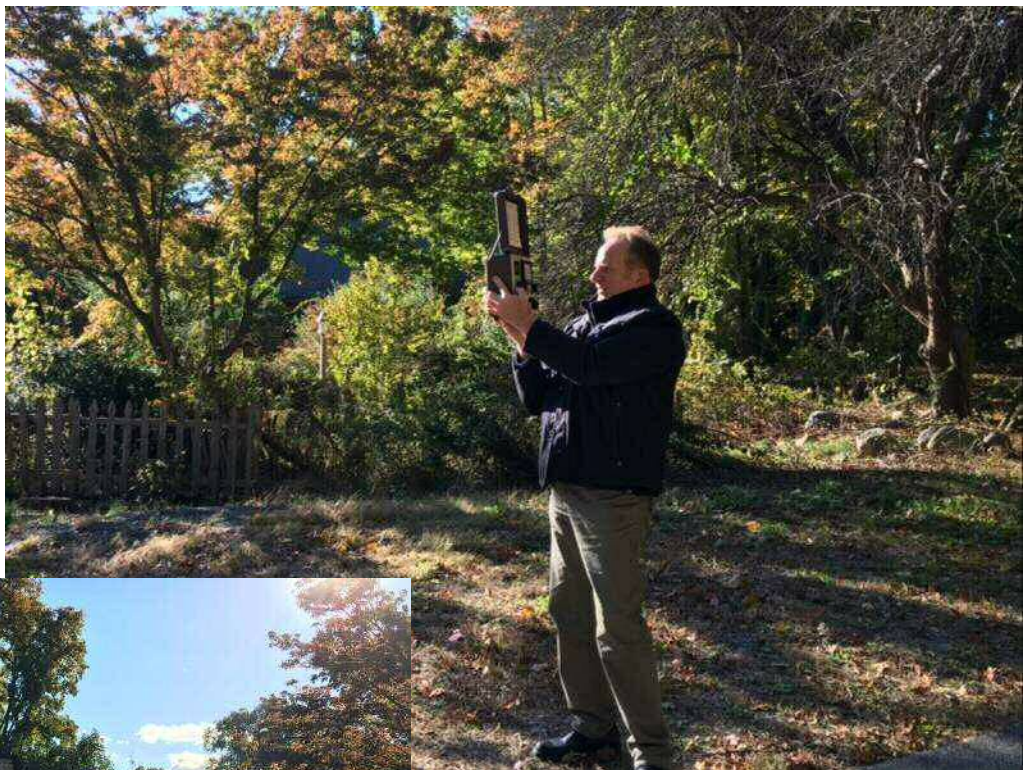
Day-DA Field Strength: 3.15 mV/m

Maximum Reading: 3.75mV/m

Location Description

Point is located in the unpaved parking area beside the house at 28 Milton Street. The point is on the edge of the pavement of the road, where it comes closest to the corner of a wooden picket fence. It is across the street from a telephone pole with a blue sign saying "Road Ends No Turnaround Ahead."

Photos are from Oct.
2018



WRPA 1290AM PROVIDENCE: MONITOR POINTS

Monitor Point 6 : King's Tabernacle Church

500 Greenville Ave / Johnston RI

41-50-47.76 N 71-29-58.04 W

Night Pattern Point

Azimuth: 256.5° true

Radial Point Number: 4

Distance to Antenna: 4.54km

Night-DA Field Strength: 6.4 mV/m

Maximum Reading: 7.7 mV/m

Location Description

Point is located in parking lot of King's Tabernacle Church, on the east side of the church building, 20ft northeast from a small decorative boulder next to the church's east annex.



Photo from Oct. 2018

WRPA 1290AM PROVIDENCE: MONITOR POINTS

Monitor Point 7 : Kern Acre Road's End

23 Kern Acre Rd / Johnston RI

41-49-43.31 N 71-29-45.49 W

Night Pattern Point

Azimuth: 234.5° true

Radial Point Number: 3

Distance to Antenna: 5.23km

Night-DA Field Strength: 3.8 mV/m

Maximum Reading: 4.6 mV/m

Location Description

Point is located at the end of Kern Acre Drive, centered at the edge of the pavement.



Photo from Oct. 2018