

JUN 01 2018

FCC Mailroom

In re Application

2018 JUN -4 PM 1:39

FM Translator Station K243BN, Channel 243 (96.5
MHz), Laveen, Arizona, Facility ID No. 92373.

Attention: Chief, Audio Division, Media Bureau

Office of the Secretary
445 12th Street, SW,
Room TW-A325
Federal Communications Commission
Washington, DC 20554

Submitted by:
1TV.com Inc.
4501 Broadway
Miami, az 85539

May 22, 2018

SUPPLEMENT INTERFERENCE COMPLAINT UNDER SECTION 74.1203

By means of this pleading, 1TV.com Inc the licensee of full-power radio station KIKO (FM), Channel 243C2 (96.5 MHz), Claypool, Arizona, Facility ID No. 11894 is providing a full coverage plotted map and link to the google map.

1TV.Com Inc. submitted a Complaint to the Commission pursuant to FCC rule 47 C.F.R. Section § 74.1203(a) of the Commission's rules, the interference complaint was filed against Construction Permit BLFT-20171005ACG, as recently licensed by the License to Cover File No. BLFT-20171211AAV, is resulting in listeners complaining of interference from the Co-channel K243BN, Channel 243 (96.5 MHz) signal to the received signal of KIKO(FM).

On March 19, 2018 1TV.com Inc the licensee of full-power radio station KIKO (FM), Channel 243C2 (96.5 MHz), Claypool, Arizona, Facility ID No. 11894 filed a Interference Complaint

On March 29, 2018, Mountain Community Translators, LLC responded to the instant Interference Complaint.

On April 12, 2018 1TV.com Inc the licensee of full-power radio station KIKO (FM), Channel 243C2 (96.5 MHz), Claypool, Arizona, Facility ID No. 11894 filed a Supplement Interference Complaint.


May 14, 2018 the FCC sent a letter #1800B3-KV to Mountain Community Translators, LLC: that within 30 days of this letter Mountain must take appropriate action required by the provision CFR § 74.1203

1TV.com Inc has received additional Interference Complaints See attached Listeners Complaints, incorporated by reference hereto Exhibit 1 and potted google earth map with engineer declaration as Exhibit 2.

As part of the interference complaint Doug Pelley declaration will provide a full plotted google map of locations listeners reception who has expressed concern over the loss of reception that results from K243BN operating on Channel 243 (96.5 MHz). Translator FM K243BN Facility ID No. 92373 which is causing interference to the reception of full power KIKO (FM) pursuant to the listener complaints. See attached Listeners Complaints, incorporated by reference hereto Exhibit 1 and potted google earth map with engineer declaration as Exhibit 2.

Listeners location on map:

Dean P. Jorgenson listener correlated to push pin (1) on the map
Joe Santo listener correlated to push pin (2) on the map
Charles R. Cusack listener correlated to push pin (3) on the ma

Respectfully submitted
John Low 
1TV.com Inc.
4501 Broadway
Miami, az 85539
v.low@att.net

CERTIFICATE OF SERVICE

I hereby certify that I have sent, this 22nd day of May 22, 2018, sent, by United States Certified Mail, postage prepaid, a physical copy of the foregoing
SUPPLEMENT INTERFERENCE COMPLAINT UNDER SECTION 74.1203, to:

Mountain Community Translators, LLC
87 Jasper Lake Road
Loveland CO 80537

Re: FM Translator Station K243BN, Channel 243 (96.5 MHz), Laveen, Arizona



John Low President
1TV.com Inc.
4501 Broadway
Miami, Az. 85539

Declaration Exhibit 1

**DEAN JORGENSON, JOE
SANTO, CHARLES R. CUSACK
Listeners Statements**

I am a regular listener of the station KIKO (FM) at 96.5 MHz from the following area/area(s): Sun Lakes

Boundary - Riggs Rd, Alma School, Hunt Highway, Dobson Rd

I received a listenable KIKO signal on my radio from the above location(s) and I have been a listener since KIKO was on 97.3 which I could hear fine from the above location. However, my reception of the KIKO signal (now on 96.5 MHz) is now being interfered with by another station signal bleeding over 96.5 MHz. I wish to continue to regularly listen to KIKO at the above location without being subject to interference caused by the interfering signal (96.5, translator K243BN, facility ID 76329).

Other than being a regular listener of KIKO, I am not connected with or employed by the licensee of KIKO. I understand that this statement may be filed with the Federal Communication Commission to protect the KIKO signal and state under penalty of perjury that this statement is true and accurate.

Signed: [Signature] Printed

Name: Dean P. Dougherty Address: 9622 E. Always Pl, Sun Lakes AZ 85248

Daytime Phone number: 707-633-0888

Date: 11/21/2018

The location description is the physical address of regular listening at home, work, etc. If regular listening location is in a vehicle, then the location description identifies the points between which the regular listening takes place such as the two exits or mile markers between which the regular listening takes place, or the cross streets for the road location where the listening regularly takes place.

I receive a listenable KIKO signal on my radio from the above location(s) and : I have been a listener since KIKO was on 97.3 which I could hear fine from the above location.. However, my reception of the KIKO signal (now on 96.5 MHz) is now being interfered with by another station signal bleeding over 96.5 MHz. I wish to continue to regularly listen to KIKO-FM 96.5 at the above location without being subject to interference caused by the interfering signal (96.5, translator K243BN, facility ID 92373). Other than being a regular listener of KIKO, I am not connected with or employed by the licensee of KIKO. I understand that this statement may be filed with the Federal Communication Commission to protect the KIKO signal and state under penalty of perjury that this statement is true and accurate.

Signed: Charles R. Cusack

Printed Name: CHARLES R. CUSACK

Address: 3195 LEMMA LANE SAN VALLEY MO 65140

Daytime Phone number: 480-275-2020

Date: 3/19/18

I receive a listenable KIKO signal on my radio from the above location(s) and : I have been a listener since KIKO was on 97.3 which I could hear fine from the above location.. However, my reception of the KIKO signal (now on 96.5 MHz) is now being interfered with by another station signal bleeding over 96.5 MHz. I wish to continue to regularly listen to KIKO-FM 96.5 at the above location without being subject to interference caused by the interfering signal (96.5, translator K243BN, facility ID 92373). Other than being a regular listener of KIKO, I am not connected with or employed by the licensee of KIKO. I understand that this statement may be filed with the Federal Communication Commission to protect the KIKO signal and state under penalty of perjury that this statement is true and accurate.

Signed: _____

Printed Name: _____

Address: _____

Daytime Phone number: _____

Date: _____

I Listen at home and on the way to work in goodyear also when traveling to other places always some kind of interference

*/ The location description is the physical address of regular listening at home. Work, etc. If regular listening location is in a vehicle, then the location description identifies the points between which the regular listening takes place-such as the two exits or mile markers between which the regular listening takes place., or the cross streets for the road location where the listening regularly takes place.

Doug Pelley engineer KIKO (FM)
Declaration Exhibit Two

**The Licensee of Full Power Radio Station
KIKO (FM), Facility ID No. 11894 Listeners
are being impacted by: Mountain Community
Translators, LLC**

**Doug Pelley engineer KIKO (FM)
Declaration**

Figure 1, 2, 3 are maps which I plotted the locations listeners of Dean P. Jorgenson listener correlated to push pin (1) on the map Joe Santo listener correlated to push pin (2) on the map Charles R. Cusack listener correlated to push pin (3) on the maps who have expressed concern over the loss of reception that results from K243BP operating on Channel 243 (956.5 MHz). Translator FM K243BP which is causing interference to the reception of full power KIKO (FM) pursuant to the listener complaints.

Pursuant to FCC staff where an interference complaint has been filed by a bona-fide listener and the interference damages the direct reception by the the off-the air signal of any authorized broadcast station, FCC rule 47 C.F.R. § 74.1203 is activated.

Listeners location on map:

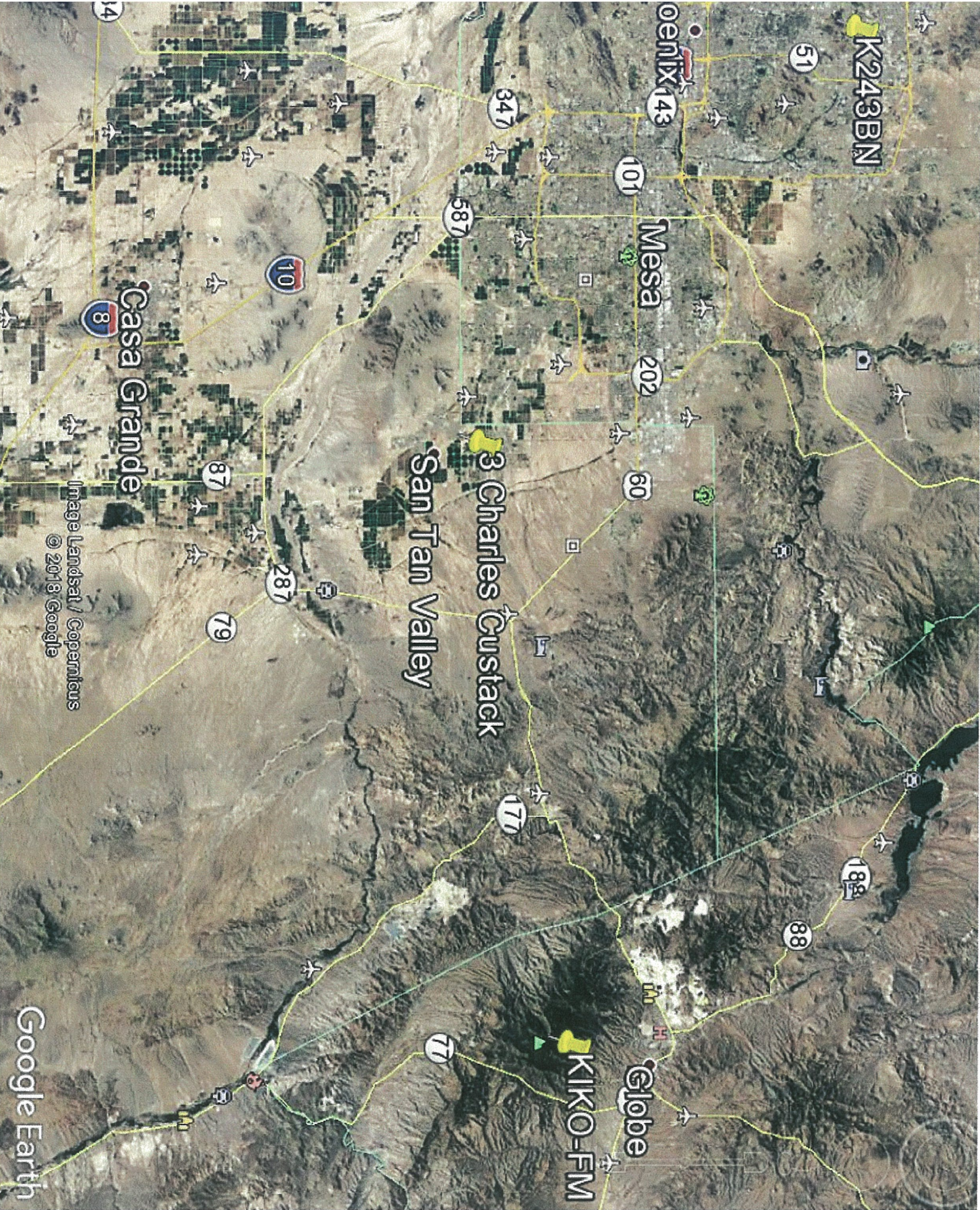
Dean P. Jorgenson listener correlated to push pin (1) on the map
Joe Santo listener correlated to push pin (2) on the map
Charles R. Cusack listener correlated to push pin (3) on the ma

1/2 2/2

“The foregoing is true and correct, to the best of my personal knowledge, information, and belief, under penalty of perjury.”



Respectfully submitted
Doug Pelley
May-25-2018



K243BN

Phoenix 143

Mesa

202

60

Charles Cushman
San Tan Valley

KIKO-FM

Globe

Casa Grande

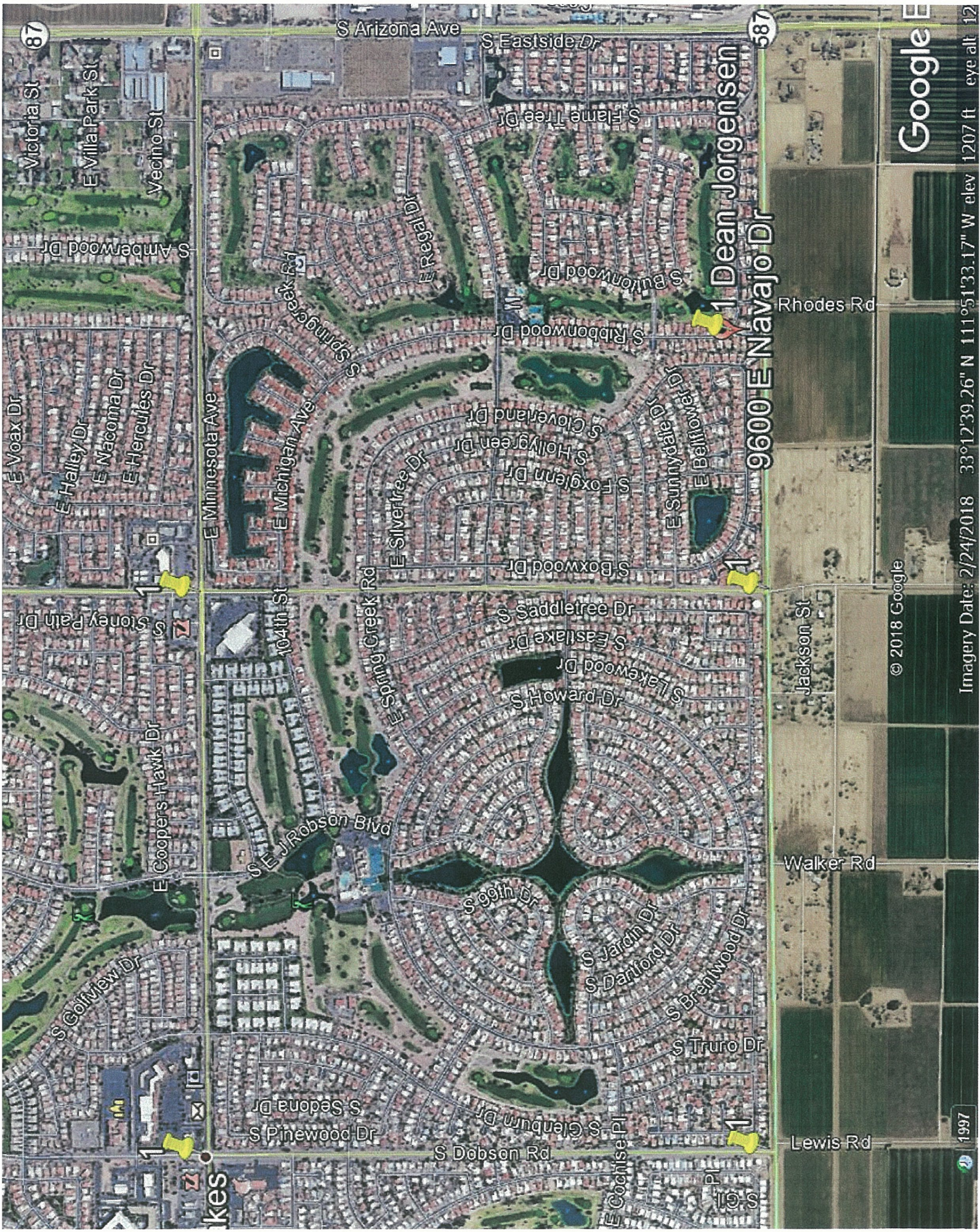
Google Earth

Image Landsat / Copernicus
© 2018 Google



33°17'05.92" N 111°22'11.81" W elev 1870 ft eye alt 72

Google Earth

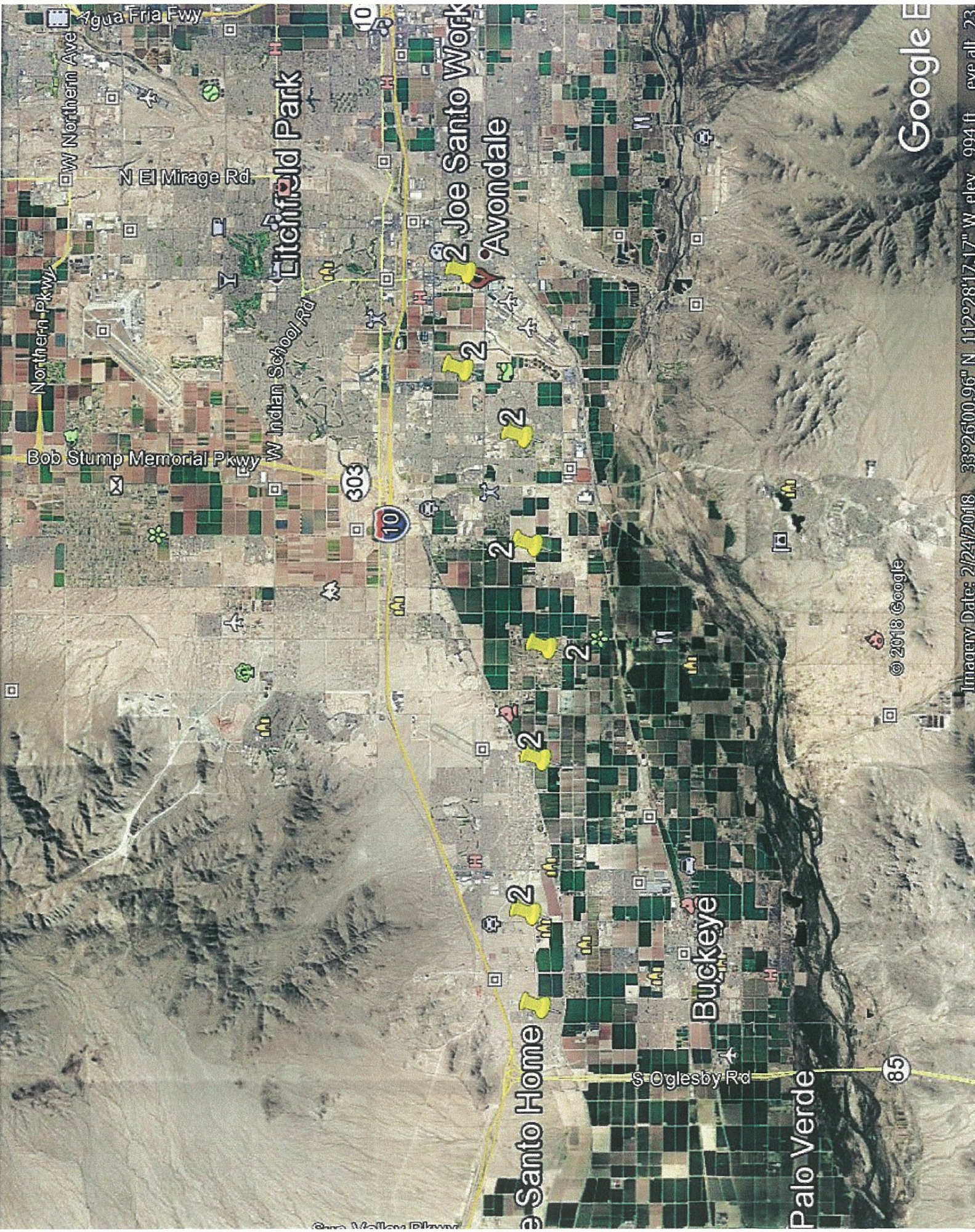


Google

© 2018 Google

Imagery Date: 2/24/2018 33°12'39.26" N 111°51'33.17" W elev 1207 ft eye alt 12

1997



Google E

Imagery Date: 2/24/2018 33°26'00.96" N 112°28'17.17" W elev 994 ft

© 2018 Google

