

In re Application

Mountain Community Translators, LLC

FM Translator Station K243BN, Channel 243 (96.5
MHz), Laveen, Arizona, Facility ID No. 92373.

2018 MAR 20 PM 2: 43

Received & Inspected

MAR 19 2018

FCC Mailroom

Attention: Chief, Audio Division, Media Bureau

Office of Secretary

445 12st. SW., ROOM TW -A325

Federal Communications Commission

Washington, DC 20554

Submitted by:

1TV.com Inc.

4501 Broadway

Miami, az 85539

INTERFERENCE COMPLAINT UNDER SECTION 74.1203

1TV.com Inc. filed a Modification of License requests for change of channel that was granted by Construction Permit File No. BMLH-20170407AAM.

1TV.Com Inc. the licensee of full-power radio station KIKO (FM), Channel 243C2 (96.5 MHz), Claypool, Arizona, Facility ID No. 11894 has long-term listeners, which are now suffering interference from **Co-Channel** K243BN, Channel 243 (96.5 MHz), Laveen, Arizona, Facility ID No. 92373.

ITV.Com Inc. is submitting a Complaint to the Commission pursuant to FCC rule 47 C.F.R.Section § 74.1203(a) of the Commission's rules, the interference complaint is filed against Construction Permit BLFT-20171005ACG, as recently licensed by the License to Cover File No. BLFT-20171211AAV, is resulting in listeners complaining of interference

from the **Co-channel** K243BN, Channel 243 (96.5 MHz) signal to the received signal of KIKO(FM). See attached Listeners Complaints, incorporated by reference hereto Exhibit 1 and potted google earth map with engineer declaration as Exhibit 2.

Mountain Community Translators, LLC was sent a cease and desist demand, however, Mountain Community Translators, LLC refuses to shut down K243BN, Channel 243 (96.5 MHz), Laveen, Arizona, Facility ID No. 92373. Therefore, such attempts have not resolved the interference from K243BN.

The interference continues to negatively impart the listeners of KIKO. More than three interference listeners complaints have been generated as a direct result of the translator K243BN operation on 96.5 MHz are submitted hereto at Exhibit1.

1TV.Com Inc. hereby confirms that the complaining bona fide listeners are not employed of or principals of the licensee or any affiliated companies. Moreover, these listener are unbiased parties. Many other complaints have been received.

47 C.F.R § 74.1203 Interference.provides in part (a) An authorizes FM translator will not be permitted to continue to operate if it causes any interference. The FM translator rules forbid interference from translators as follows:

Where an interference complaint has been filed by a bona-fide listener and the interference damages the direct reception by the the off-the air signals of any authorized broadcast station, FCC rule 47 C.F.R. § 74.1203 is activated. In the case of 47 C.F.R. § 74.1203, qualified interference complaints, the licensee must resolve the complaint or termination of the FM translator operations.

Any FM translator station creating actual radio signal interference to any authorized broadcast station is required to eliminate the interference, regardless of the location where the flawed signal reception occurs.

In this case the intensity of the interference is significantly harmful because K243BN is **Co-Channel** with KIKO (FM), Channel 243C2 (96.5 MHz), Claypool, Arizona, Facility ID No. 11894, and KIKO-FM is plagued with interference problems from K243BN.

Thus, Section 74.1203(a)(3) states that an FM translator station will not be permitted to

continue to operate if it causes any actual radio signal interference to the direct reception by the public of the off-the air signals of any authorized broadcast stations, complaints generated as a direct result of the translators operation on 96.5 MHz are submitted hereto at Exhibit1.

Consequently, the Commission should order (the License”) of Mountain Community Translators, LLC known as FM translator K243BN, Channel 243 (96.5 MHz), Laveen, Arizona, Facility ID No. 92373 (BLFT-20171211AAV) to discontinue service.

CONCLUSION


Translator FM translator K243BN is the root of the interference to the reception of KIKO(FM) pursuant to listener complaints. Pursuant to FCC staff where an interference complaint has been filed by a bona-fide listener and the interference damages the direct reception by the the off-the air signal

of any authorized broadcast station, FCC rule 47 C.F.R. § 74.1203 is activated.

In the case of 47 C.F.R. § 74.1203, qualified interference complaints, the licensee must resolve the

complaint or terminate the FM translator operations.

Respectfully submitted



John Low
1TV.com Inc.
4501 Broadway
Miami, az 85539

CERTIFICATE OF SERVICE

I hereby certify that I have, this 12th day of March, 2018, sent, by United States Certified Mail, postage prepaid, a physical copy of the foregoing INTERFERENCE COMPLAINT UNDER SECTION 74.1203, to:

**Mountain Community Translators, LLC
87 Jasper Lake Road
Loveland CO 80537**

**Re: FM Translator Station K243BN, Channel 243 (96.5 MHz), Laveen,
Arizona**



**John Low President
1TV.com Inc.
4501 Broadway
Miami, Az. 85539**

**The Licensee of Full Power Radio Station KIKO (FM),
Facility ID No. 11894 Listeners is being impacted by:**
Mountain Community Translators, LLC Facility ID No. 92373

Doug Pelley engineer KIKO (FM) Declaration

Exhibit 2 is a map which I plotted the locations listeners reception who have expressed concern over the loss of reception that results from K243BN operating on Channel 243 (96.5 MHz).

Translator FM K243BN Facility ID No. 92373 which is causing interference to the reception of full power KIKO (FM) pursuant to the listener complaints.

Pursuant to FCC staff where an interference complaint has been filed by a bona-fide listener and the interference damages the direct reception of the the off-the air signal of any authorized broadcast station, FCC rule 47 C.F.R. § 74.1203 is activated.

In this case of 47 C.F.R. § 74.1203, qualified interference complaint, the licensee must resolve the complaint or terminate the FM translator operations. Moreover, this instant matter is extremely severe because Mountain Community Translators, LLC FM Translator Station K243BN, Channel 243 (96.5 MHz), Laveen, Arizona, Facility ID No. 92373, is **Co-Channel to a full power** KIKO (FM), Channel 243C2 (96.5 MHz), Claypool, Arizona, Facility ID No. 92373.

Mountain Community Translators LLC's owner is an engineer. I sent a certified cease and desist letter to the aforementioned owner of Mountain Community Translators LLC's. Therefore, he is fully aware of the rules, but he refuses to discontinue

operation.

The following is a link to the plotted map:

<https://drive.google.com/open?id=1MYT-zn41CJTUF5cmdQrtjZHFxaEb0NMH>

“The foregoing is true and correct, to the best of my personal knowledge, information, and belief, under penalty of perjury.”

Respectfully submitted

A small, square, black and white image of a handwritten signature. The signature appears to be "Doug Pelley" written in cursive script.

Doug Pelley
Engineer

Exhibit 2

I want to listen to the station KIKO (FM) at 96.5 MHz oldie's format from the following area/area(s):

from Central + McDowell to Union Hills
and 59th ave

However, my reception of the KIKO signal (now on 96.5 MHz) is being interfered with by another station signal bleeding over 96.5 MHz. I wish to listen to KIKO at the above location without being subject to interference caused by the interfering co-channel signal (96.5, translator K243BN, facility ID 76329). I was on Bethany and 17th and heard
Spanish music on the station

Other than a desire to listen to my oldies on KIKO, I am not employed by the licensee of KIKO. I understand that this statement may be filed with the Federal Communication Commission to protect the KIKO signal and state under penalty of perjury that this statement is true and accurate.

Signed: Cynthia DeSanti

Printed Name: Cynthia DeSanti

Address: 16602 W. 33rd ave Phx

Daytime Phone number: 602 510 9310

Date: 2-20-18

The location description is the physical address of regular listening at home. Work, etc. If regular listening location is in a vehicle, then the location description identifies the points between which the regular listening takes place—such as the two exits or mile markers between which the regular listening takes place., or the cross streets for the road location where the listening regularly takes place.

I am a regular listener of the station KIKO (FM) at 96.5 MHz from the following area/area(s):

Central + McDowell — 59th + Union Hills

Interference to KIKO-FM. Push pins correlate to listener complaint file

Write a description for your map.

Exhibit 2

Legend

- 60
- Air
- Fe
- Fe
- Fe
- Fe
- Pe

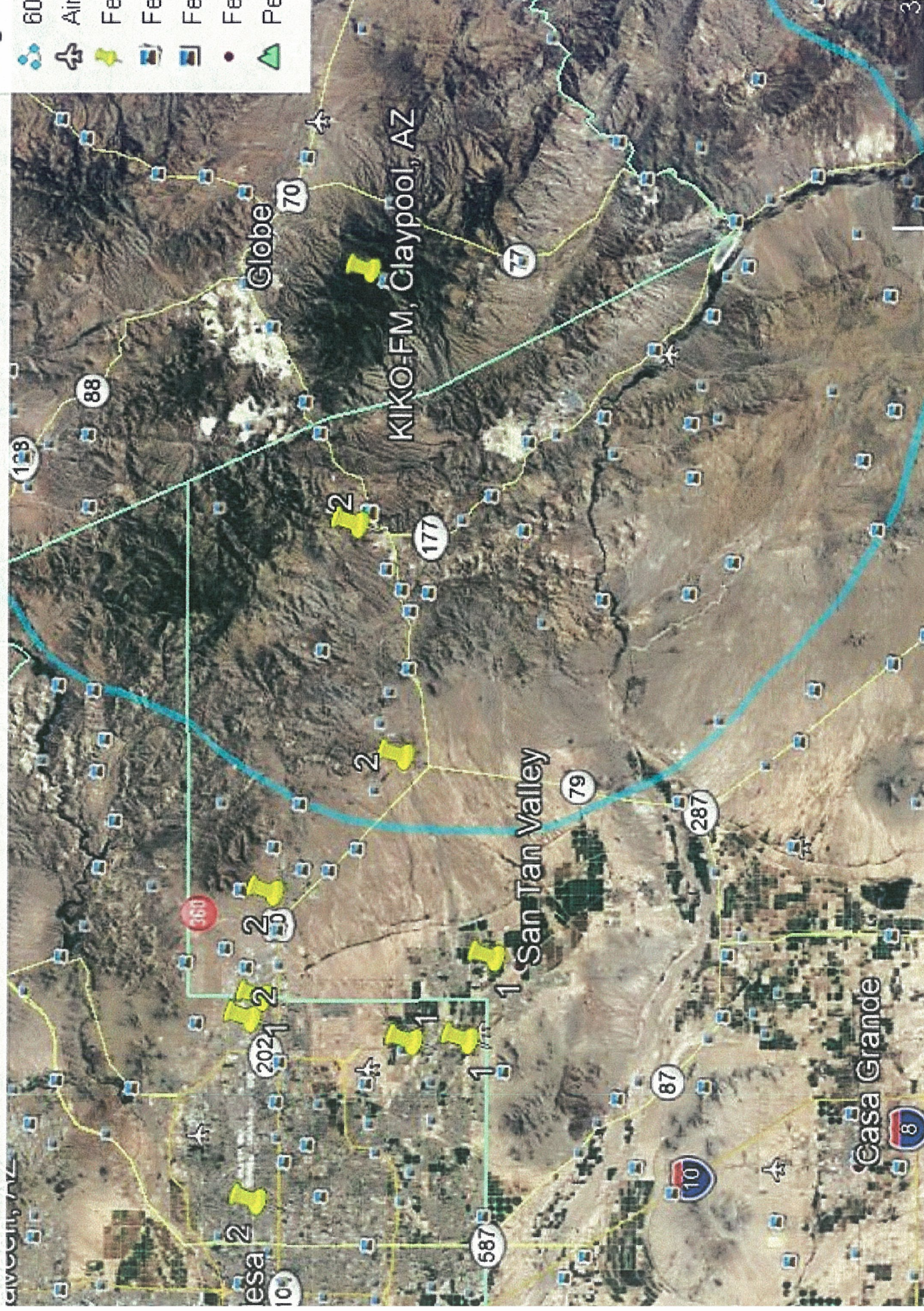


Exhibit 2

I am a regular listener of the station KIKO (FM) at 96.5 MHz from the following area/area(s):

*1 While driving between Mesa and Bylas
AZ on Wednesday, Thursday and Friday nights

I receive a listenable KIKO signal on my radio from the above location(s) and : I have been a listener since KIKO was on 97.3 which I could hear fine from the above location.. However, my reception of the KIKO signal (now on 96.5 MHz) is now being interfered with by another station signal bleeding over 96.5 MHz. I wish to continue to regularly listen to KIKO-FM 96.5 at the above location without being subject to interference caused by the interfering signal (96.5, translator K243BN, facility ID 76329). Other than being a regular listener of KIKO, I am not connected with or employed by the licensee of KIKO. I understand that this statement may be filed with the Federal Communication Commission to protect the KIKO signal and state under penalty of perjury that this statement is true and accurate.

Signed: Kevin F. Tew

Printed Name: Kevin Tew

Address: 1121 E. Jasper Dr. Gilbert AZ 85296

Daytime Phone number: 480-388-4517

Date: 11/7/17

*/ The location description is the physical address of regular listening at home. Work, etc. If regular listening location is in a vehicle, then the location description identifies the points between which the regular listening takes place-such as the two exits or mile markers between which the regular listening takes place., or the cross streets for the road location where the listening regularly takes place.

Interference to KIKO-FM. Push pins correlate to listener complaint file

Write a description for your map.

Exhibit 2

- Legen
- 60
 - Air
 - Fe
 - Fe
 - Fe
 - Fe
 - Pe

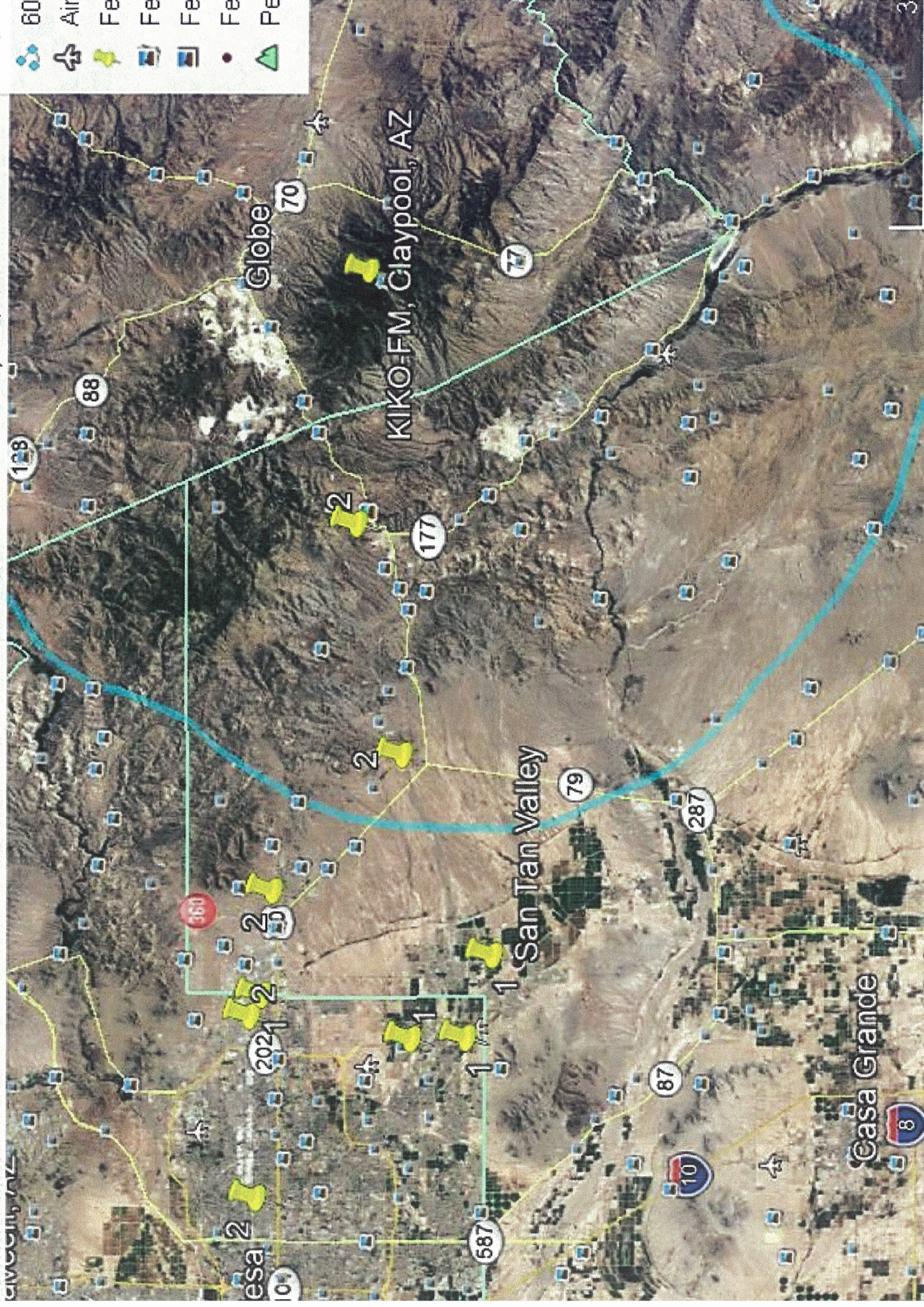


Exhibit 2

I am a regular listener of the station KIKO (FM) at 96.5 MHz from the following area/area(s):

* / San Tan Valley
Queen Creek
Mesa

I receive a listenable KIKO signal on my radio from the above location(s) and : I have been a listener since KIKO was on 97.3 which I could hear fine from the above location.. However, my reception of the KIKO signal (now on 96.5 MHz) was fine as well, but is now being interfered with by another station signal bleeding over 96.5 MHz. I wish to continue to regularly listen to KIKO at the above location without being subject to interference caused by the interfering signal (96.5, translator K243BN, facility ID 76329).

Other than being a regular listener of KIKO, I am not connected with or employed by the licensee of KIKO. I understand that this statement may be filed with the Federal Communication Commission to protect the KIKO signal and state under penalty of perjury that this statement is true and accurate.

Signed: JoAnn R Schack

Printed Name: JoAnn R Schack

Address: 29900 N Desert Willow Blvd.

Daytime Phone number: (480) 338-1682

Date: ~~NOV~~ NOV. 24. 2017

* / The location description is the physical address of regular listening at home. Work, etc. If regular listening location is in a vehicle, then the location description identifies the points between which the regular listening takes place-such as the two exits or mile markers between which the regular listening takes place., or the cross streets for the road location where the listening regularly takes place.

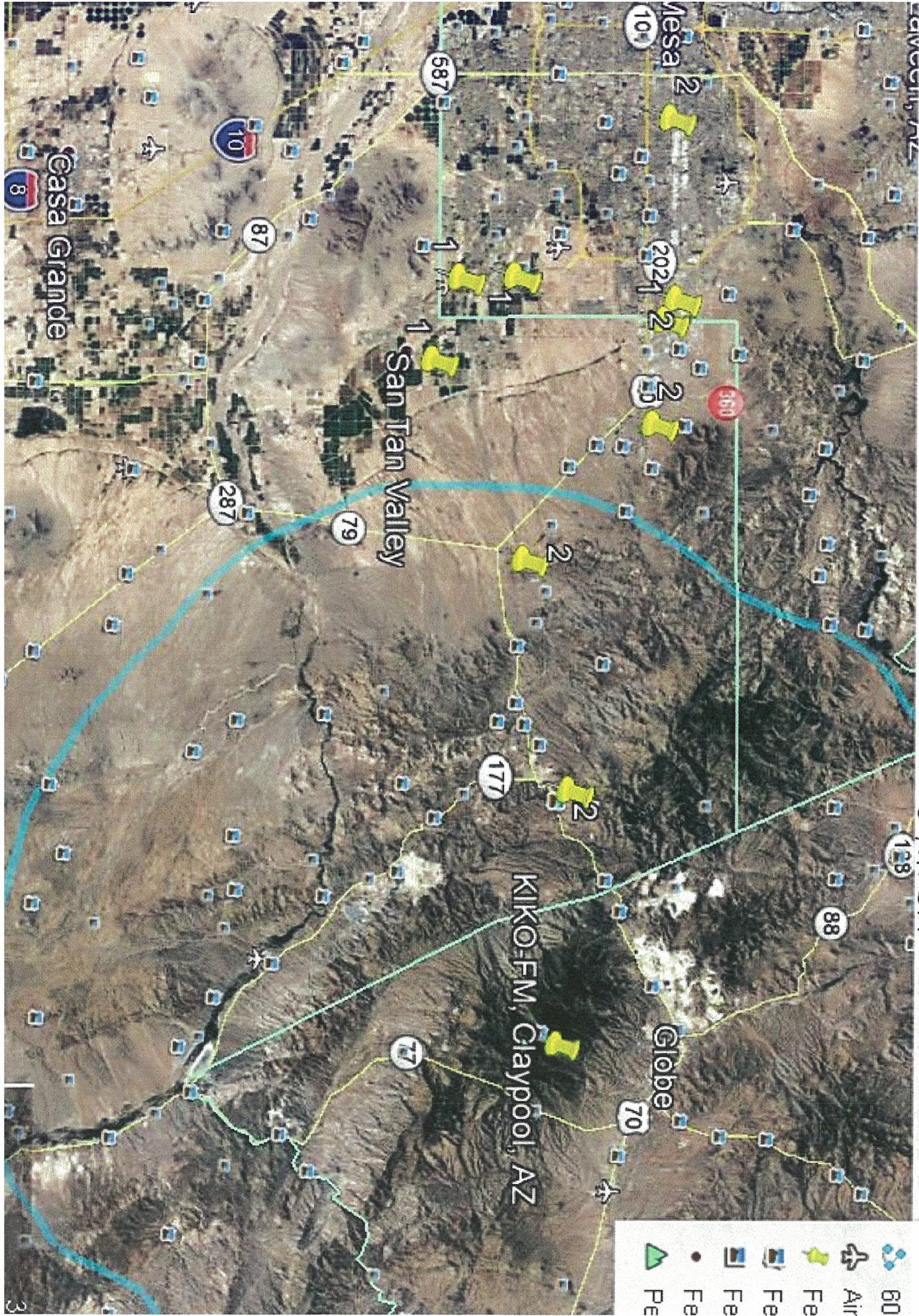
I am a regular listener of the station KIKO (FM) at 96.5 MHz from the following area/area(s):

* / I frequently get interference in my vehicle, one
place of note is on Hunt Highway just south of
Empire. It's a Christian music station

interference to KIKO-FM. Push pins correlate to listener complaint file

Write a description for your map.

Exhibit 2



Legen

- 60
- Air
- Fe
- Fe
- Fe
- Pe