

June 14, 2017

**RE: W265AV Woodstock Suggested Measures for Resolving Complaints from WJES-FM.**

Nelson Rodriguez:

I am writing to address your interference complaints and to hopefully provide a long-term solution. For the plan below to be executed, I will need cooperation from you and the FCC.

After our conversation last Friday, I felt that putting this plan of action on paper and submitting it for you and Mr. Martin to look over was best.

For this plan to be executed, we are requesting that you withdraw all complaints and give IBN time to execute this plan of action. We acknowledge that you have every right to resubmit your complaints at any time even after this plan has been executed.

Plan of action:

1. We believe that we can eliminate almost all power from W265AV radiating towards Lawrenceville, GA (desired audience) by using a directional antenna. **I plan on having this antenna installed within the next 6 to 7 weeks from the date of this letter. We will need FCC approval for this to happen as well as approval from American Tower Corporation.**
2. While this plan is being executed, IBN will voluntarily reduce power to 25%.
3. If step 1 doesn't suffice, we would also like to offer our assistance in moving WJES closer to the Lawrenceville area. Bob Moore has already completed the research and this move is possible. Moving WJES closer to Lawrenceville would give WJES a better signal and still be able to cover the city of license. It would also create a listenable signal in the city of Athens GA which is generally a desirable market. IBN would be willing to pay for the relocation by purchasing a new antenna and feedline as well as paying for a tower crew to install the new antenna. The engineering data can be provided and is ready for your consideration.
4. We have also considered buying an FM translator and allowing Mr. Rodriguez to use the translator in the Lawrenceville area at no charge. We acknowledge this is an expensive and time-consuming endeavor. We also acknowledge that IBN may not be able to make this happen. However, it is an option to be considered and we have already began contacting broadcasters with translators in the Lawrenceville area to see if this would be feasible. This option is unlikely but one that should be considered.

Lastly, if the FCC shuts W265AV down and we are unable to execute this plan it is noted that WJES will still not have the desired signal strength in Lawrenceville, GA and our offer to pay for this move will no longer be available.

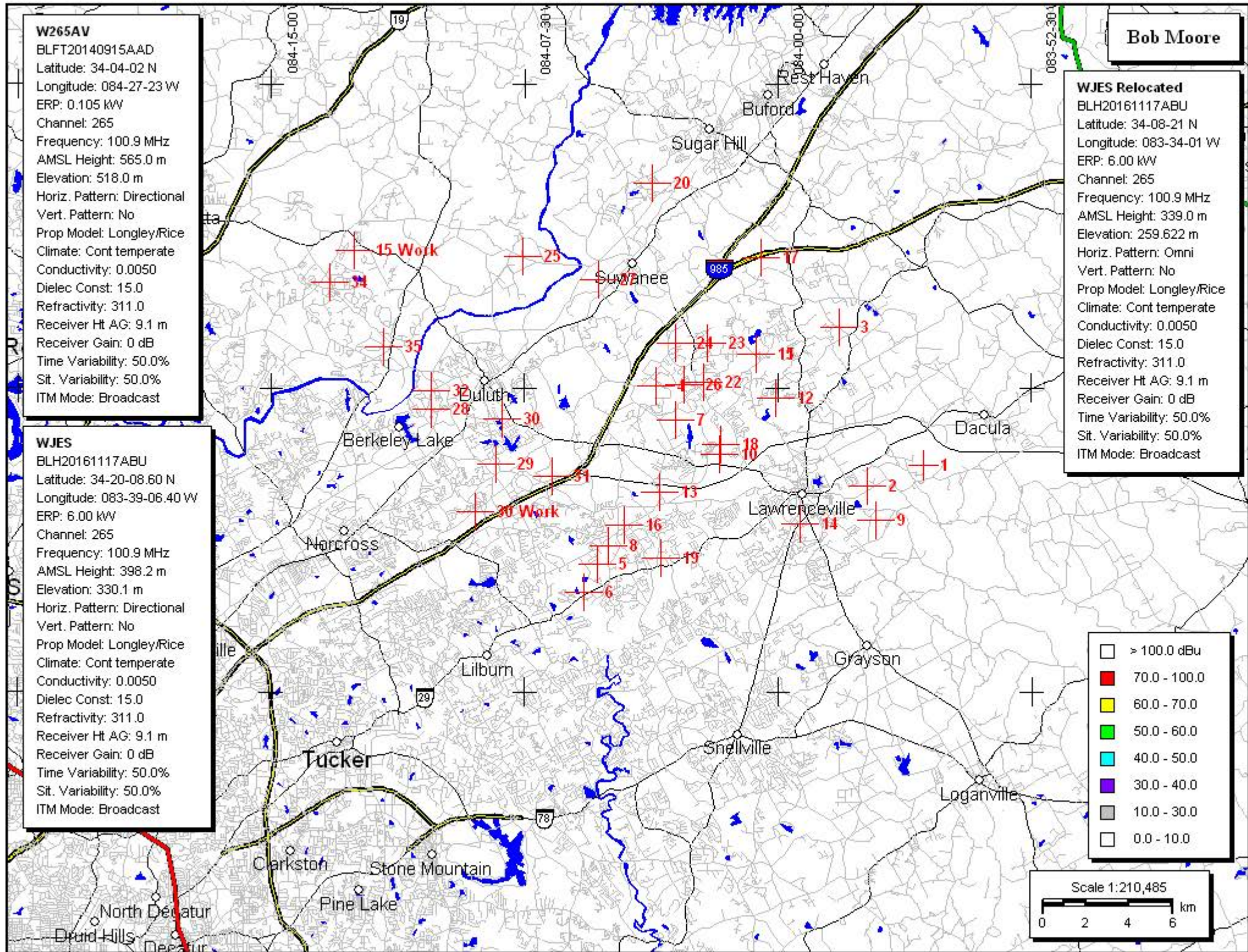
Respectfully submitted,  
Neil Hopper  
Immanuel Broadcasting Network

**W265AV**  
 BLFT20140915AAD  
 Latitude: 34-04-02 N  
 Longitude: 084-27-23 W  
 ERP: 0.105 kW  
 Channel: 265  
 Frequency: 100.9 MHz  
 AMSL Height: 565.0 m  
 Elevation: 518.0 m  
 Horiz. Pattern: Directional  
 Vert. Pattern: No  
 Prop Model: Longley/Rice  
 Climate: Cont temperate  
 Conductivity: 0.0050  
 Dielec Const: 15.0  
 Refractivity: 311.0  
 Receiver Ht AG: 9.1 m  
 Receiver Gain: 0 dB  
 Time Variability: 50.0%  
 Sit. Variability: 50.0%  
 ITM Mode: Broadcast

**WJES**  
 BLH20161117ABU  
 Latitude: 34-20-08.60 N  
 Longitude: 083-39-06.40 W  
 ERP: 6.00 kW  
 Channel: 265  
 Frequency: 100.9 MHz  
 AMSL Height: 398.2 m  
 Elevation: 330.1 m  
 Horiz. Pattern: Directional  
 Vert. Pattern: No  
 Prop Model: Longley/Rice  
 Climate: Cont temperate  
 Conductivity: 0.0050  
 Dielec Const: 15.0  
 Refractivity: 311.0  
 Receiver Ht AG: 9.1 m  
 Receiver Gain: 0 dB  
 Time Variability: 50.0%  
 Sit. Variability: 50.0%  
 ITM Mode: Broadcast

**Bob Moore**

**WJES Relocated**  
 BLH20161117ABU  
 Latitude: 34-08-21 N  
 Longitude: 083-34-01 W  
 ERP: 6.00 kW  
 Channel: 265  
 Frequency: 100.9 MHz  
 AMSL Height: 339.0 m  
 Elevation: 259.622 m  
 Horiz. Pattern: Omni  
 Vert. Pattern: No  
 Prop Model: Longley/Rice  
 Climate: Cont temperate  
 Conductivity: 0.0050  
 Dielec Const: 15.0  
 Refractivity: 311.0  
 Receiver Ht AG: 9.1 m  
 Receiver Gain: 0 dB  
 Time Variability: 50.0%  
 Sit. Variability: 50.0%  
 ITM Mode: Broadcast



Field Strength

- W265AV
- WJES
- WJES Relocated

All None

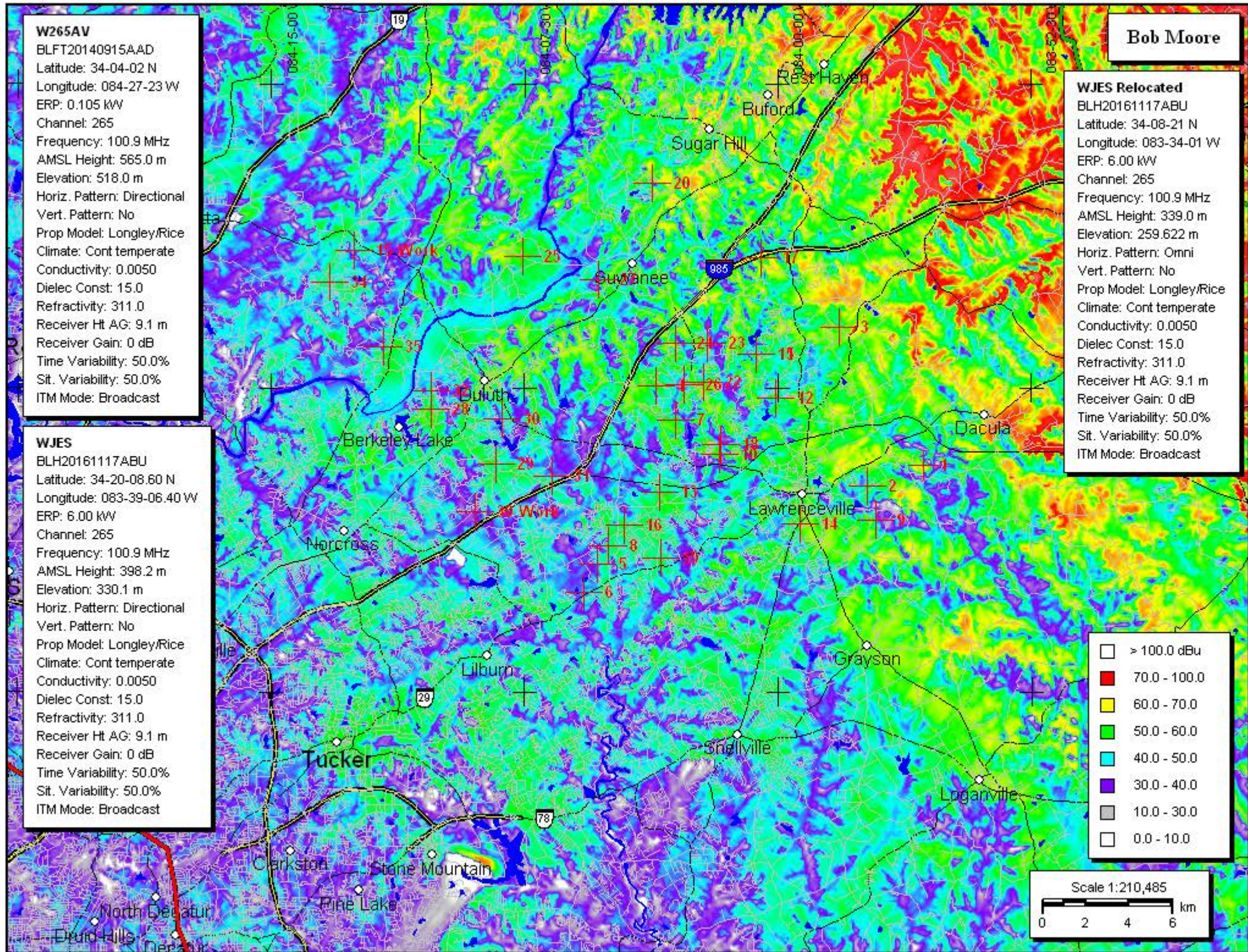
Redraw

Display Options

- > 100.0 dBu
- 70.0 - 100.0
- 60.0 - 70.0
- 50.0 - 60.0
- 40.0 - 50.0
- 30.0 - 40.0
- 10.0 - 30.0
- 0.0 - 10.0

> 100.0 dBu  
 70.0 - 100.0  
 60.0 - 70.0  
 50.0 - 60.0  
 40.0 - 50.0  
 30.0 - 40.0  
 10.0 - 30.0  
 0.0 - 10.0





**W265AV**  
 BLFT20140915AAD  
 Latitude: 34-04-02 N  
 Longitude: 084-27-23 W  
 ERP: 0.105 kW  
 Channel: 265  
 Frequency: 100.9 MHz  
 AMSL Height: 565.0 m  
 Elevation: 518.0 m  
 Horiz. Pattern: Directional  
 Vert. Pattern: No  
 Prop Model: Longley/Rice  
 Climate: Cont temperate  
 Conductivity: 0.0050  
 Dielec Const: 15.0  
 Refractivity: 311.0  
 Receiver Ht AG: 9.1 m  
 Receiver Gain: 0 dB  
 Time Variability: 50.0%  
 Sit. Variability: 50.0%  
 ITM Mode: Broadcast

**WJES**  
 BLH20161117ABU  
 Latitude: 34-20-08.60 N  
 Longitude: 083-39-06.40 W  
 ERP: 6.00 kW  
 Channel: 265  
 Frequency: 100.9 MHz  
 AMSL Height: 398.2 m  
 Elevation: 330.1 m  
 Horiz. Pattern: Directional  
 Vert. Pattern: No  
 Prop Model: Longley/Rice  
 Climate: Cont temperate  
 Conductivity: 0.0050  
 Dielec Const: 15.0  
 Refractivity: 311.0  
 Receiver Ht AG: 9.1 m  
 Receiver Gain: 0 dB  
 Time Variability: 50.0%  
 Sit. Variability: 50.0%  
 ITM Mode: Broadcast

**WJES Relocated**  
 BLH20161117ABU  
 Latitude: 34-08-21 N  
 Longitude: 083-34-01 W  
 ERP: 6.00 kW  
 Channel: 265  
 Frequency: 100.9 MHz  
 AMSL Height: 339.0 m  
 Elevation: 259.622 m  
 Horiz. Pattern: Omni  
 Vert. Pattern: No  
 Prop Model: Longley/Rice  
 Climate: Cont temperate  
 Conductivity: 0.0050  
 Dielec Const: 15.0  
 Refractivity: 311.0  
 Receiver Ht AG: 9.1 m  
 Receiver Gain: 0 dB  
 Time Variability: 50.0%  
 Sit. Variability: 50.0%  
 ITM Mode: Broadcast

Legend for Field Strength (dBu):

- > 100.0 dBu
- 70.0 - 100.0
- 60.0 - 70.0
- 50.0 - 60.0
- 40.0 - 50.0
- 30.0 - 40.0
- 10.0 - 30.0
- 0.0 - 10.0



Field Strength

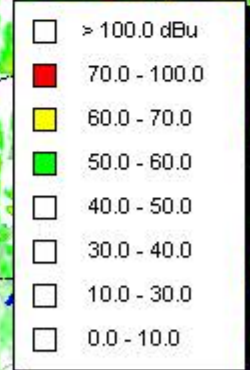
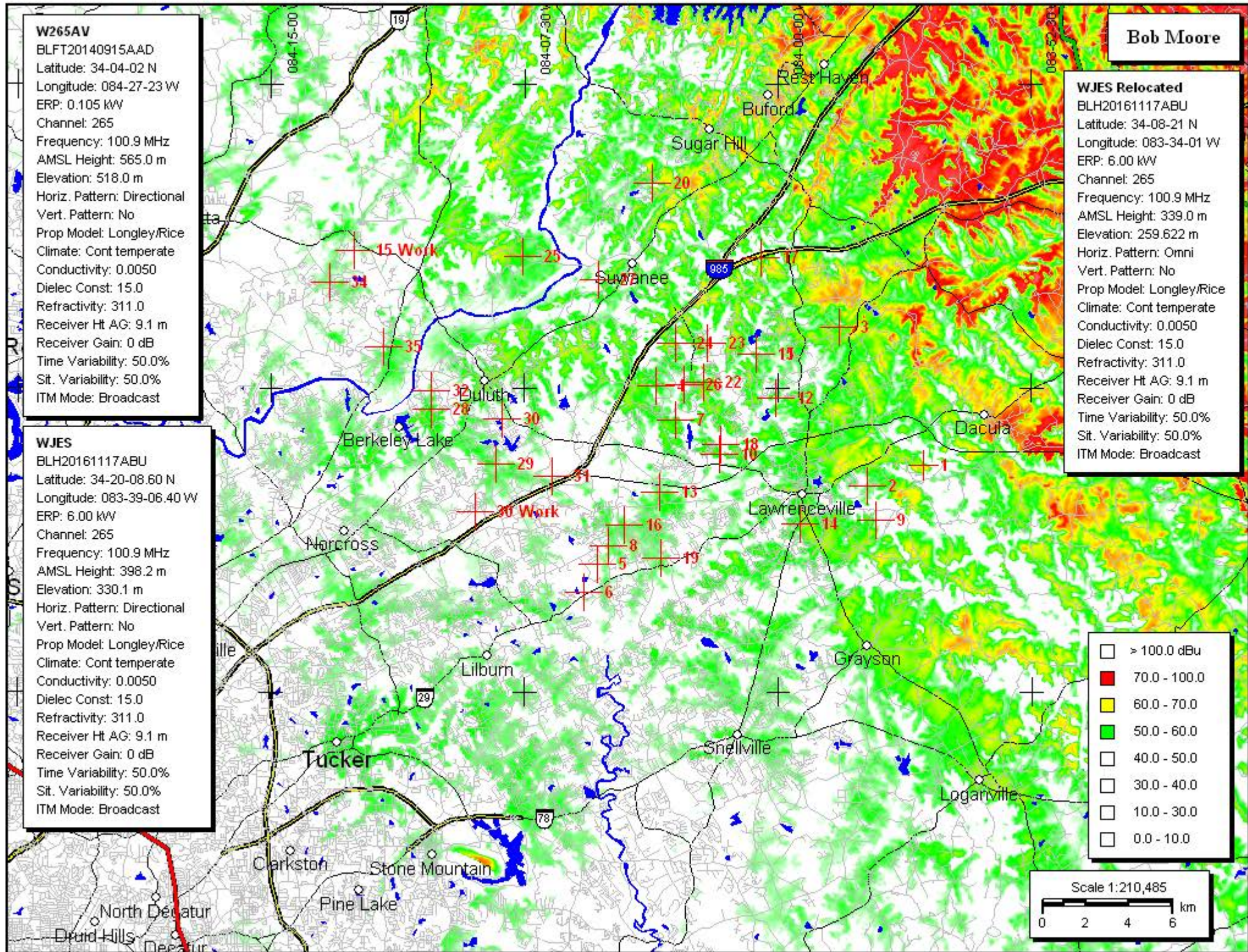
- W265AV
- WJES
- WJES Relocated

Buttons: All, None, Redraw, Display Options

**W265AV**  
 BLFT20140915AAD  
 Latitude: 34-04-02 N  
 Longitude: 084-27-23 W  
 ERP: 0.105 kW  
 Channel: 265  
 Frequency: 100.9 MHz  
 AMSL Height: 565.0 m  
 Elevation: 518.0 m  
 Horiz. Pattern: Directional  
 Vert. Pattern: No  
 Prop Model: Longley/Rice  
 Climate: Cont temperate  
 Conductivity: 0.0050  
 Dielec Const: 15.0  
 Refractivity: 311.0  
 Receiver Ht AG: 9.1 m  
 Receiver Gain: 0 dB  
 Time Variability: 50.0%  
 Sit. Variability: 50.0%  
 ITM Mode: Broadcast

**WJES**  
 BLH20161117ABU  
 Latitude: 34-20-08.60 N  
 Longitude: 083-39-06.40 W  
 ERP: 6.00 kW  
 Channel: 265  
 Frequency: 100.9 MHz  
 AMSL Height: 398.2 m  
 Elevation: 330.1 m  
 Horiz. Pattern: Directional  
 Vert. Pattern: No  
 Prop Model: Longley/Rice  
 Climate: Cont temperate  
 Conductivity: 0.0050  
 Dielec Const: 15.0  
 Refractivity: 311.0  
 Receiver Ht AG: 9.1 m  
 Receiver Gain: 0 dB  
 Time Variability: 50.0%  
 Sit. Variability: 50.0%  
 ITM Mode: Broadcast

**WJES Relocated**  
 BLH20161117ABU  
 Latitude: 34-08-21 N  
 Longitude: 083-34-01 W  
 ERP: 6.00 kW  
 Channel: 265  
 Frequency: 100.9 MHz  
 AMSL Height: 339.0 m  
 Elevation: 259.622 m  
 Horiz. Pattern: Omni  
 Vert. Pattern: No  
 Prop Model: Longley/Rice  
 Climate: Cont temperate  
 Conductivity: 0.0050  
 Dielec Const: 15.0  
 Refractivity: 311.0  
 Receiver Ht AG: 9.1 m  
 Receiver Gain: 0 dB  
 Time Variability: 50.0%  
 Sit. Variability: 50.0%  
 ITM Mode: Broadcast



Field Strength

- W265AV
- WJES
- WJES Relocated

All None

Redraw

Display Options

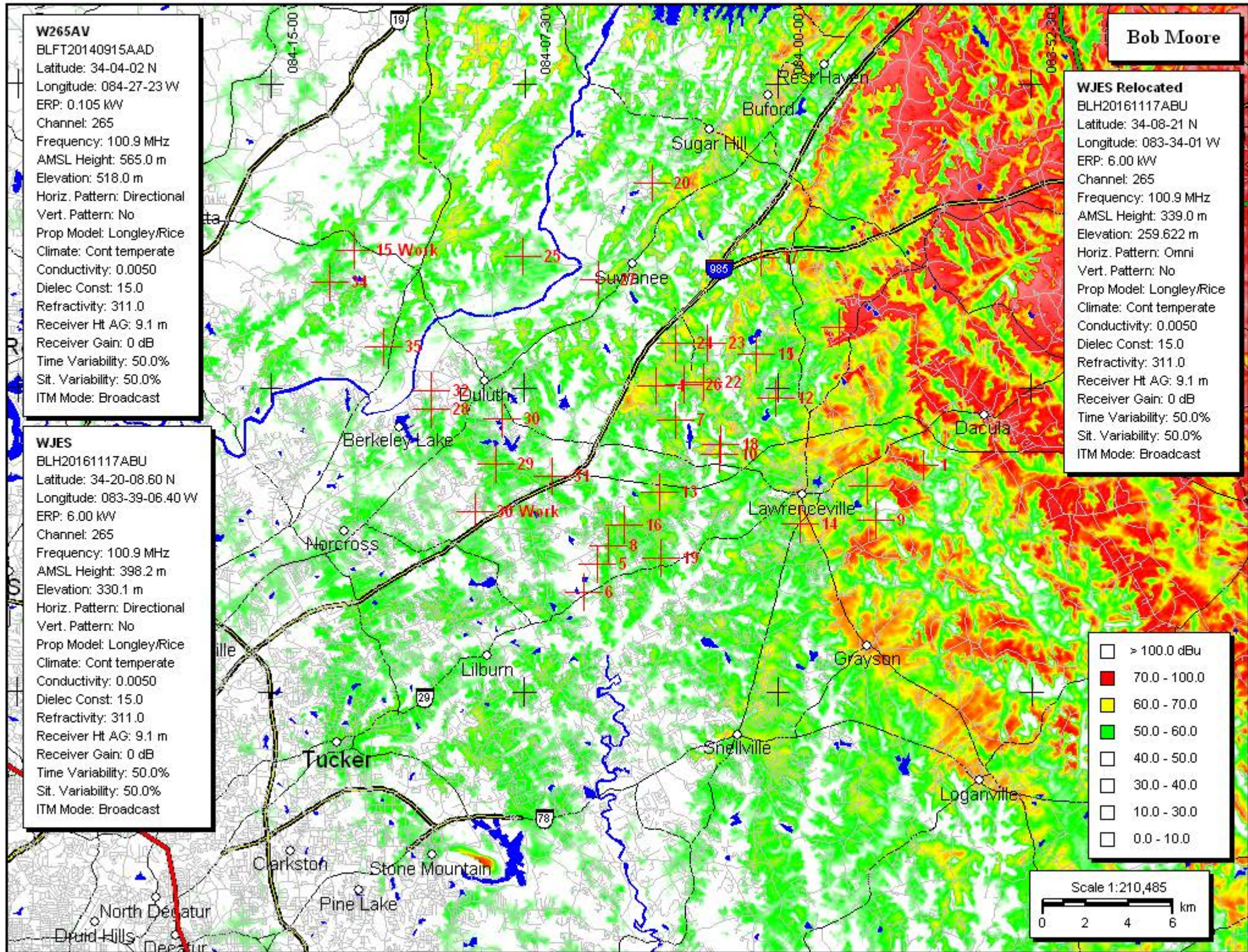


**W265AV**  
 BLFT20140915AAD  
 Latitude: 34-04-02 N  
 Longitude: 084-27-23 W  
 ERP: 0.105 kW  
 Channel: 265  
 Frequency: 100.9 MHz  
 AMSL Height: 565.0 m  
 Elevation: 518.0 m  
 Horiz. Pattern: Directional  
 Vert. Pattern: No  
 Prop Model: Longley/Rice  
 Climate: Cont temperate  
 Conductivity: 0.0050  
 Dielec Const: 15.0  
 Refractivity: 311.0  
 Receiver Ht AG: 9.1 m  
 Receiver Gain: 0 dB  
 Time Variability: 50.0%  
 Sit. Variability: 50.0%  
 ITM Mode: Broadcast

**WJES**  
 BLH20161117ABU  
 Latitude: 34-20-08.60 N  
 Longitude: 083-39-06.40 W  
 ERP: 6.00 kW  
 Channel: 265  
 Frequency: 100.9 MHz  
 AMSL Height: 398.2 m  
 Elevation: 330.1 m  
 Horiz. Pattern: Directional  
 Vert. Pattern: No  
 Prop Model: Longley/Rice  
 Climate: Cont temperate  
 Conductivity: 0.0050  
 Dielec Const: 15.0  
 Refractivity: 311.0  
 Receiver Ht AG: 9.1 m  
 Receiver Gain: 0 dB  
 Time Variability: 50.0%  
 Sit. Variability: 50.0%  
 ITM Mode: Broadcast

**Bob Moore**

**WJES Relocated**  
 BLH20161117ABU  
 Latitude: 34-08-21 N  
 Longitude: 083-34-01 W  
 ERP: 6.00 kW  
 Channel: 265  
 Frequency: 100.9 MHz  
 AMSL Height: 339.0 m  
 Elevation: 259.622 m  
 Horiz. Pattern: Omni  
 Vert. Pattern: No  
 Prop Model: Longley/Rice  
 Climate: Cont temperate  
 Conductivity: 0.0050  
 Dielec Const: 15.0  
 Refractivity: 311.0  
 Receiver Ht AG: 9.1 m  
 Receiver Gain: 0 dB  
 Time Variability: 50.0%  
 Sit. Variability: 50.0%  
 ITM Mode: Broadcast



Field Strength

- W265AV
- WJES
- WJES Relocated

All None

Redraw

Display Options

- > 100.0 dBu
- 70.0 - 100.0
- 60.0 - 70.0
- 50.0 - 60.0
- 40.0 - 50.0
- 30.0 - 40.0
- 10.0 - 30.0
- 0.0 - 10.0

- > 100.0 dBu
- 70.0 - 100.0
- 60.0 - 70.0
- 50.0 - 60.0
- 40.0 - 50.0
- 30.0 - 40.0
- 10.0 - 30.0
- 0.0 - 10.0



**W265AV**  
 BLFT20140915AAD  
 Latitude: 34-04-02 N  
 Longitude: 084-27-23 W  
 ERP: 0.105 kW  
 Channel: 265  
 Frequency: 100.9 MHz  
 AMSL Height: 565.0 m  
 Elevation: 518.0 m  
 Horiz. Pattern: Directional  
 Vert. Pattern: No  
 Prop Model: Longley/Rice  
 Climate: Cont temperate  
 Conductivity: 0.0050  
 Dielec Const: 15.0  
 Refractivity: 311.0  
 Receiver Ht AG: 9.1 m  
 Receiver Gain: 0 dB  
 Time Variability: 50.0%  
 Sit. Variability: 50.0%  
 ITM Mode: Broadcast

**WJES**  
 BLH20161117ABU  
 Latitude: 34-20-08.60 N  
 Longitude: 083-39-06.40 W  
 ERP: 6.00 kW  
 Channel: 265  
 Frequency: 100.9 MHz  
 AMSL Height: 398.2 m  
 Elevation: 330.1 m  
 Horiz. Pattern: Directional  
 Vert. Pattern: No  
 Prop Model: Longley/Rice  
 Climate: Cont temperate  
 Conductivity: 0.0050  
 Dielec Const: 15.0  
 Refractivity: 311.0  
 Receiver Ht AG: 9.1 m  
 Receiver Gain: 0 dB  
 Time Variability: 50.0%  
 Sit. Variability: 50.0%  
 ITM Mode: Broadcast

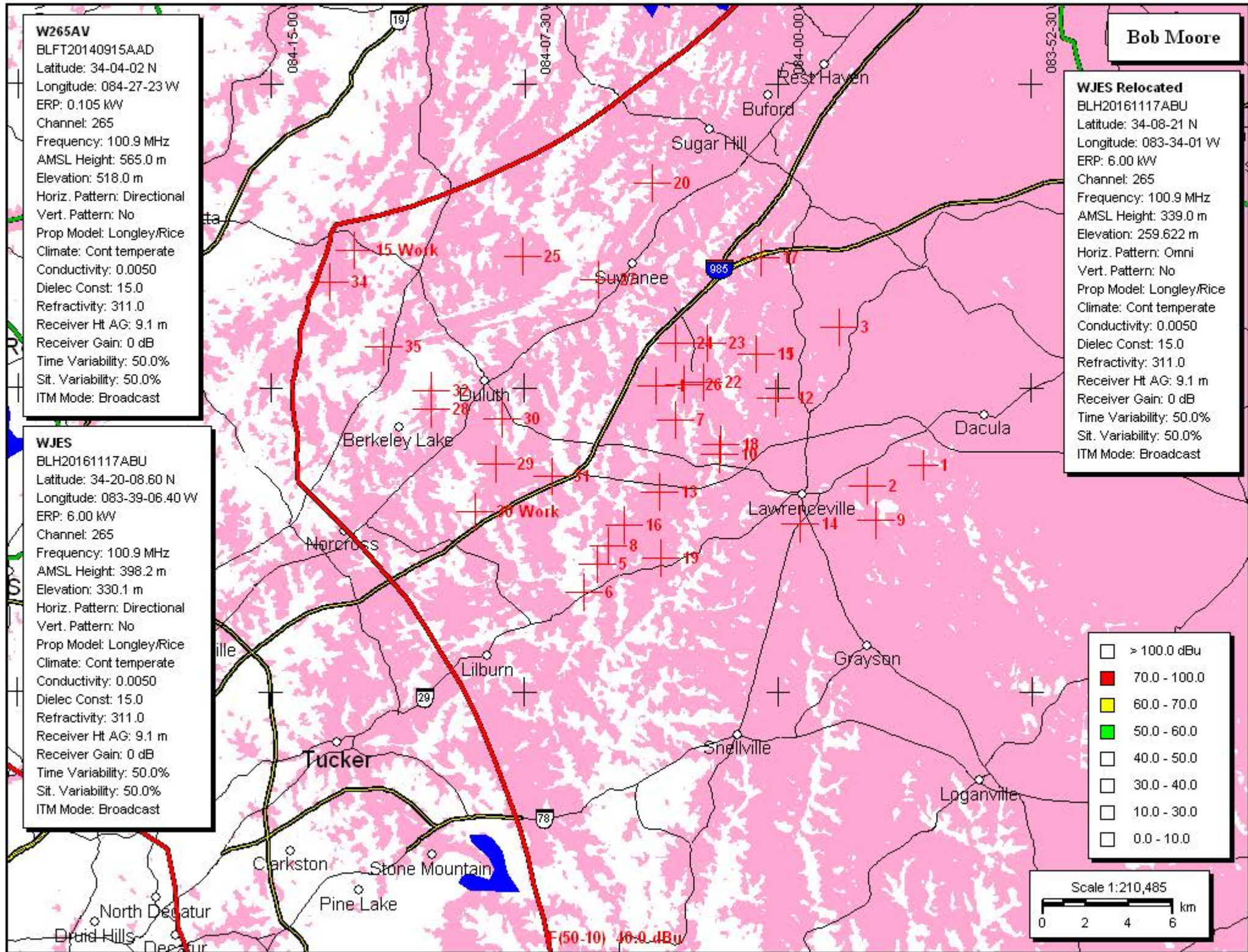
**WJES Relocated**  
 BLH20161117ABU  
 Latitude: 34-08-21 N  
 Longitude: 083-34-01 W  
 ERP: 6.00 kW  
 Channel: 265  
 Frequency: 100.9 MHz  
 AMSL Height: 339.0 m  
 Elevation: 259.622 m  
 Horiz. Pattern: Omni  
 Vert. Pattern: No  
 Prop Model: Longley/Rice  
 Climate: Cont temperate  
 Conductivity: 0.0050  
 Dielec Const: 15.0  
 Refractivity: 311.0  
 Receiver Ht AG: 9.1 m  
 Receiver Gain: 0 dB  
 Time Variability: 50.0%  
 Sit. Variability: 50.0%  
 ITM Mode: Broadcast

Transmitter Color  
 W265AV  
 WJES  
 WJES Relocated

> 100.0 dBu  
 70.0 - 100.0  
 60.0 - 70.0  
 50.0 - 60.0  
 40.0 - 50.0  
 30.0 - 40.0  
 10.0 - 30.0  
 0.0 - 10.0

> 100.0 dBu  
 70.0 - 100.0  
 60.0 - 70.0  
 50.0 - 60.0  
 40.0 - 50.0  
 30.0 - 40.0  
 10.0 - 30.0  
 0.0 - 10.0

Scale 1:210,485  
 0 2 4 6 km



# Antenna Pattern

Load

Save

Insert Point

Delete Point

Edit Mode:

Pre-Rotation

Post-Rotation

0.0 = 1.0

10.0 = 1.0

20.0 = 1.0

30.0 = 1.0

40.0 = 1.0

50.0 = 1.0

60.0 = 1.0

70.0 = 0.8

80.0 = 0.45

90.0 = 0.17

100.0 = 0.15

110.0 = 0.15

120.0 = 0.17

130.0 = 0.45

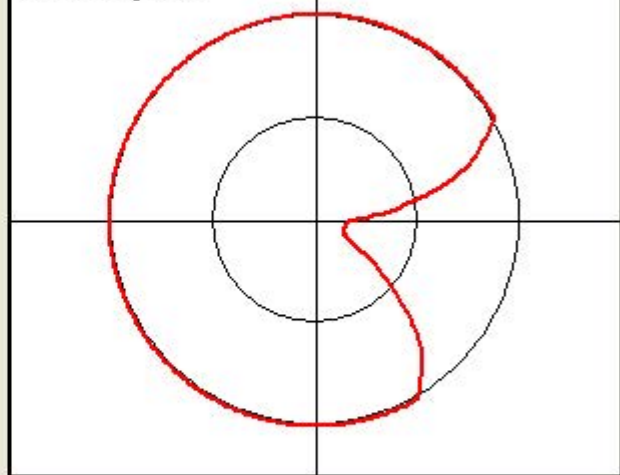
140.0 = 0.8

150.0 = 1.0

160.0 = 1.0

170.0 = 1.0

Rotation Angle = 0



0.0 Deg. = 1.0

Rotate

0

Clear Pattern

Print

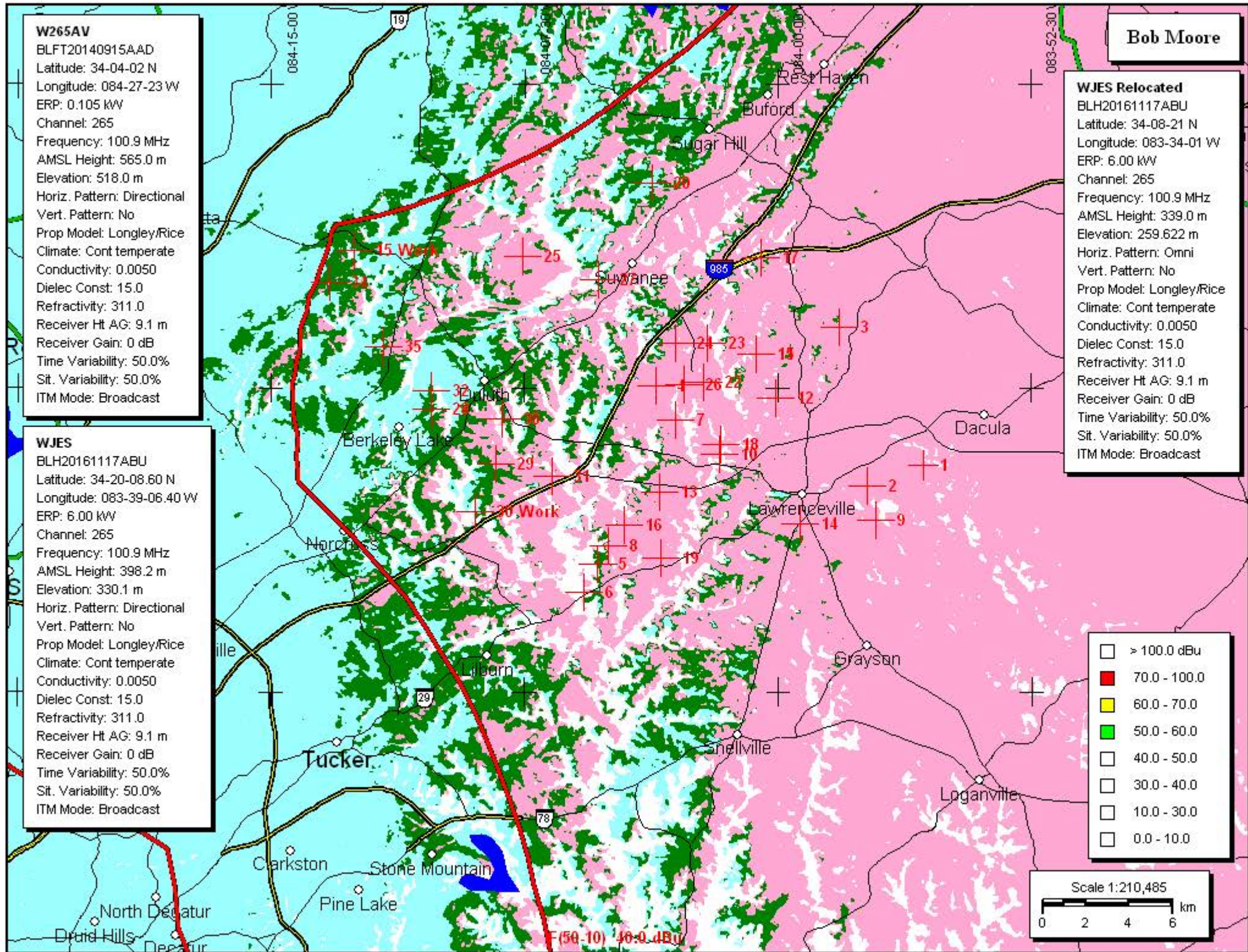
Accept

Cancel

**W265AV**  
 BLFT20140915AAD  
 Latitude: 34-04-02 N  
 Longitude: 084-27-23 W  
 ERP: 0.105 kW  
 Channel: 265  
 Frequency: 100.9 MHz  
 AMSL Height: 565.0 m  
 Elevation: 518.0 m  
 Horiz. Pattern: Directional  
 Vert. Pattern: No  
 Prop Model: Longley/Rice  
 Climate: Cont temperate  
 Conductivity: 0.0050  
 Dielec Const: 15.0  
 Refractivity: 311.0  
 Receiver Ht AG: 9.1 m  
 Receiver Gain: 0 dB  
 Time Variability: 50.0%  
 Sit. Variability: 50.0%  
 ITM Mode: Broadcast

**WJES**  
 BLH20161117ABU  
 Latitude: 34-20-08.60 N  
 Longitude: 083-39-06.40 W  
 ERP: 6.00 kW  
 Channel: 265  
 Frequency: 100.9 MHz  
 AMSL Height: 398.2 m  
 Elevation: 330.1 m  
 Horiz. Pattern: Directional  
 Vert. Pattern: No  
 Prop Model: Longley/Rice  
 Climate: Cont temperate  
 Conductivity: 0.0050  
 Dielec Const: 15.0  
 Refractivity: 311.0  
 Receiver Ht AG: 9.1 m  
 Receiver Gain: 0 dB  
 Time Variability: 50.0%  
 Sit. Variability: 50.0%  
 ITM Mode: Broadcast

**WJES Relocated**  
 BLH20161117ABU  
 Latitude: 34-08-21 N  
 Longitude: 083-34-01 W  
 ERP: 6.00 kW  
 Channel: 265  
 Frequency: 100.9 MHz  
 AMSL Height: 339.0 m  
 Elevation: 259.622 m  
 Horiz. Pattern: Omni  
 Vert. Pattern: No  
 Prop Model: Longley/Rice  
 Climate: Cont temperate  
 Conductivity: 0.0050  
 Dielec Const: 15.0  
 Refractivity: 311.0  
 Receiver Ht AG: 9.1 m  
 Receiver Gain: 0 dB  
 Time Variability: 50.0%  
 Sit. Variability: 50.0%  
 ITM Mode: Broadcast



Transmitter Color

- W265AV
- WJES
- WJES Relocated

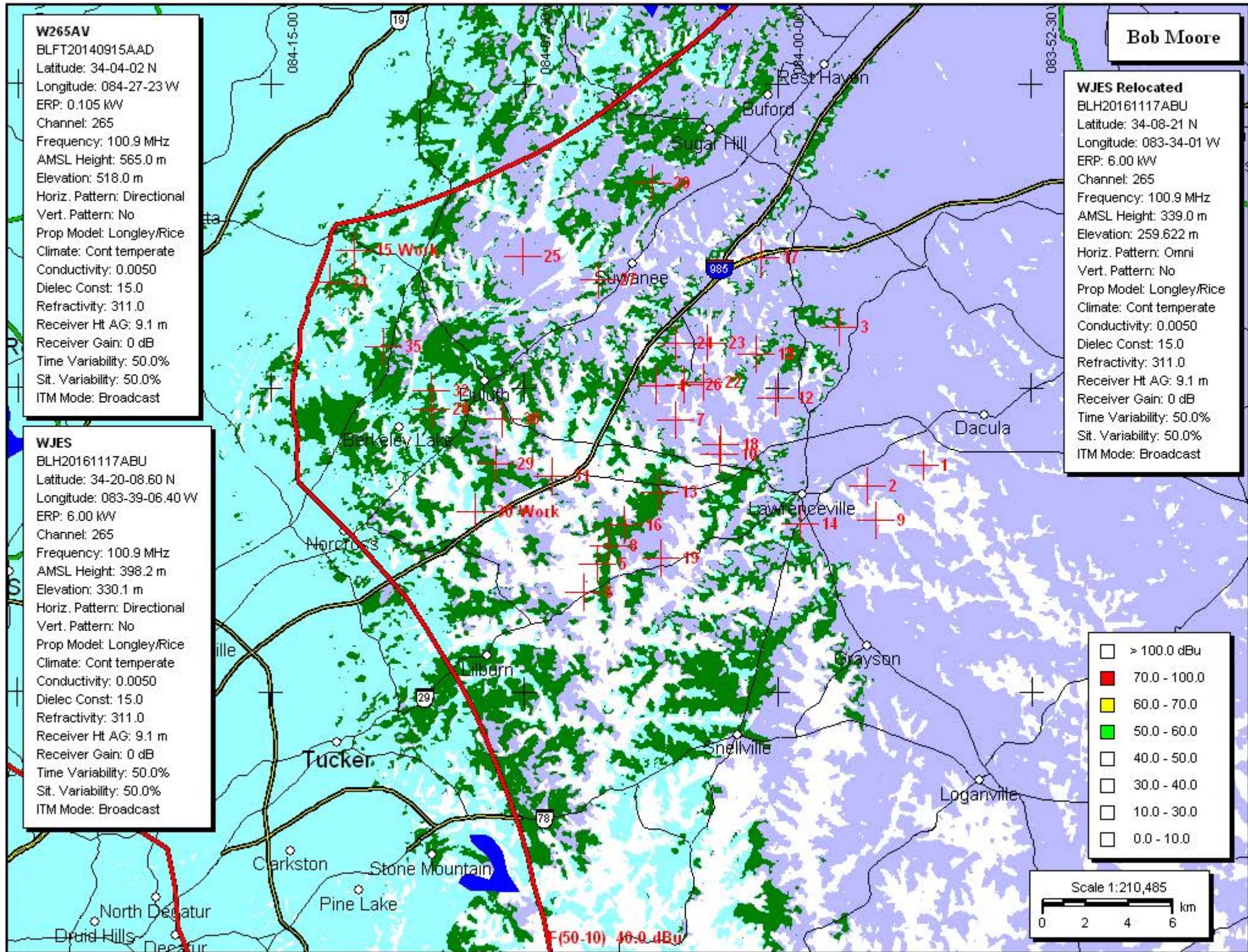
All None

Redraw

Display Options

- > 100.0 dBu
- 70.0 - 100.0
- 60.0 - 70.0
- 50.0 - 60.0
- 40.0 - 50.0
- 30.0 - 40.0
- 10.0 - 30.0
- 0.0 - 10.0





**W265AV**  
 BLFT20140915AAD  
 Latitude: 34-04-02 N  
 Longitude: 084-27-23 W  
 ERP: 0.105 kW  
 Channel: 265  
 Frequency: 100.9 MHz  
 AMSL Height: 565.0 m  
 Elevation: 518.0 m  
 Horiz. Pattern: Directional  
 Vert. Pattern: No  
 Prop Model: Longley/Rice  
 Climate: Cont temperate  
 Conductivity: 0.0050  
 Dielec Const: 15.0  
 Refractivity: 311.0  
 Receiver Ht AG: 9.1 m  
 Receiver Gain: 0 dB  
 Time Variability: 50.0%  
 Sit. Variability: 50.0%  
 ITM Mode: Broadcast

**WJES**  
 BLH20161117ABU  
 Latitude: 34-20-08.60 N  
 Longitude: 083-39-06.40 W  
 ERP: 6.00 kW  
 Channel: 265  
 Frequency: 100.9 MHz  
 AMSL Height: 398.2 m  
 Elevation: 330.1 m  
 Horiz. Pattern: Directional  
 Vert. Pattern: No  
 Prop Model: Longley/Rice  
 Climate: Cont temperate  
 Conductivity: 0.0050  
 Dielec Const: 15.0  
 Refractivity: 311.0  
 Receiver Ht AG: 9.1 m  
 Receiver Gain: 0 dB  
 Time Variability: 50.0%  
 Sit. Variability: 50.0%  
 ITM Mode: Broadcast

**WJES Relocated**  
 BLH20161117ABU  
 Latitude: 34-08-21 N  
 Longitude: 083-34-01 W  
 ERP: 6.00 kW  
 Channel: 265  
 Frequency: 100.9 MHz  
 AMSL Height: 339.0 m  
 Elevation: 259.622 m  
 Horiz. Pattern: Omni  
 Vert. Pattern: No  
 Prop Model: Longley/Rice  
 Climate: Cont temperate  
 Conductivity: 0.0050  
 Dielec Const: 15.0  
 Refractivity: 311.0  
 Receiver Ht AG: 9.1 m  
 Receiver Gain: 0 dB  
 Time Variability: 50.0%  
 Sit. Variability: 50.0%  
 ITM Mode: Broadcast

Legend for dBu levels:  
 > 100.0 dBu (White)  
 70.0 - 100.0 (Red)  
 60.0 - 70.0 (Yellow)  
 50.0 - 60.0 (Green)  
 40.0 - 50.0 (Light Blue)  
 30.0 - 40.0 (Medium Blue)  
 10.0 - 30.0 (Dark Blue)  
 0.0 - 10.0 (Very Dark Blue)



Transmitter Color

- W265AV
- WJES
- WJES Relocated