



WASHINGTON, D.C. OFFICE

fifth floor

flour mill building

1000 potomac street nw

washington, d.c. 20007-3501

TEL 202 965 7880 FAX 202 965 1729

OTHER OFFICES

beijing, china

new york, new york

portland, oregon

seattle, washington

GSBLAW.COM

G A R V E Y S C H U B E R T B A R E R

A PARTNERSHIP OF PROFESSIONAL CORPORATIONS

*Please reply to ERWIN G. KRASNOW
ekrasnow@gsblaw.com TEL EXT 2161*

April 30, 2014

VIA HAND DELIVERY

Ms. Marlene H. Dortch, Secretary
Federal Communications Commission
445 12th Street, SW
Washington, DC 20554

Re: Saga Communications of New England, Inc.
FM Translator Station W231BR
Facility Id. No. 140894
Manchester, NH

Dear Ms. Dortch:

Transmitted herewith on behalf of Northeast Communications Corporation, are an original and four copies of its Complaint filed with respect to the above-referenced translator station.

Please direct any questions concerning this matter to this office.

Respectfully submitted,

Erwin G. Krasnow

EGK:yg
Enclosures

DC_DOCS:718013.1

**Before the
FEDERAL COMMUNICATIONS COMMISSION
Washington, D.C. 20554**

In re Matter of)	
)	
SAGA COMMUNICATIONS OF NEW ENGLAND, INC.)	Facility ID No. 140894
)	
FM Translator Station W231BR)	
Channel 231, Manchester, NH)	

To: Secretary, FCC
Attn: Chief, Audio Division, Media Bureau

COMPLAINT

Northeast Communications Corporation (“Northeast”), the licensee of full-power radio station WFTN(FM), Channel 231 (94.1 MHz), Franklin, New Hampshire, Facility ID. 49390, hereby submits this Complaint pursuant to Section 74.1203(a) of the Commission’s Rules. Northeast requests that the Audio Division issue an order at the earliest possible time requiring Saga Communications, Inc. of New England (“Saga”) to discontinue operation of co-channel FM translator W231BR, Channel 231 (94.1 MHz), Manchester, New Hampshire, Facility ID No. 140894. As shown herein, beginning with the date that W231BR commenced operation at its mountaintop site, the translator station has been causing destructive interference to *bona fide* listeners of WFTN. If Saga does not voluntarily cease operation of W231BR, the Audio Division should take **immediate** action to terminate W231BR’s operational authority pursuant to Section 74.1203(a) of the Commission’s rules.

I. Introduction: The Need for Expedited Action

The Commission's rules require FM translator stations to operate strictly on a secondary basis. Section 74.1203(a) of the Commission's rules provides:

An authorized FM translator or booster station will not be permitted to continue to operate if it causes any actual interference to: ... (3) The direct reception by the public of the off-the-air signals of any authorized broadcast station.... Interference will be considered to occur whenever reception of a regularly used signal is impaired by the signals radiated by the FM translator or booster station, regardless of the quality of such reception, the strength of the signal so used, or the channel on which the protected signal is transmitted...

The attachments to the Declaration of Jeffrey Fisher demonstrate that beginning in late August of last year **and continuing to the present time**, W231BR has been causing "actual" radio signal interference to "the direct reception by the public of the off-the-air signal" of co-channel station WFTN.

According to FCC records, Saga completed construction of the modified facilities of W231BR at a new site located at Lookout Tower on South Mountain, and filed a covering license application on August 1, 2013. *See* FCC File No. BLFT-20130801ARM. The operation of W231BR from its newly licensed mountaintop antenna site¹ has provided the translator station with a direct path into the Concord, New Hampshire area --- and such operation continues to cause debilitating interference to co-channel station WFTN.

¹ It is instructive to compare the facilities for the two sites previously licensed to W231BR to gain an understanding of why interference is being created W231BR with its newly licensed facilities that authorize the translator station to operate from a mountain top location with a line of sight path to the Concord, New Hampshire area. W231BR Site 1: licensed on September 5, 2007, specified an ERP of 100 watts, non-directional, with an antenna height above sea level of 71 meters. *See* BLFT-20050923ADD. W231BR Site 2: licensed on December 17, 2008, specified an ERP of 250 watts, directional, with an antenna height above sea level of 179 meters. *See* BLFT-20081020ANK. W231BR Site 3 (Existing Site): licensed on August 22, 2013, specifies an ERP of 250 watts, directional, with an antenna height above sea level of 411 meters. *See* BLFT-20130801ARM. *See* Technical Report of R. Stuart Graham of Graham Brock, Inc. which appears as Attachment D to Declaration of Jeffrey Fisher.

On or about August 22, 2013, Northeast began receiving complaints of interference to the regularly-received signal of WFTN within its protected 54 dBu contour. Advertising and listenership fell significantly due to the detrimental interference to the WFTN signal. See Declaration of Jeffrey Fisher (“Fisher Declaration”). The Fisher Declaration provides a detailed chronology of Northeast’s efforts to resolve the interference issues without the intervention of the Commission. Despite repeated promises by Saga to correct the problem, the interference to WFTN persists. Section 74.1203(a) is clear that an FM translator is not to cause interference to a full-service station. The listener complaints discussed herein clearly demonstrate that W231BR is inflicting upon WFTN the very type of interference prohibited by Section 74.1203(a).

II. Listener Complaints of Interference

On September 3, 2013, Northeast advised counsel for Saga that listeners of WFTN had complained of recent difficulties in receiving the station at their homes and in nearby areas while driving. See Attachment B to Fisher Declaration. On September 17, 2013, counsel for Saga was provided with a list of the names and addresses of listeners who regularly listen to WFTN but whose ability to hear the station was being hampered because they no longer receive a clear signal from WFTN in the Concord, New Hampshire area. See Attachment C to Fisher Declaration. The names and addresses of WFTN listeners who complained about interference during the past three weeks appear in Attachment C. Northeast hereby confirms that the complaining listeners are not employees of or principals of the licensee or its parent or affiliated companies. Thus, these listener complainants are “disinterested” parties.²

There is no requirement for listener complainants to be at stationary locations or locations within the principal city contour of the full service FM station. *See* 47 C.F.R. §

² *See id.*, 19 FCC Rcd at n. 37 (complainant should be “disinterested,” that is, “a person or entity without a legal stake in the outcome of the translator station licensing proceeding).

74.1203(a). Saga, however, has refused to acknowledge interference received by listeners of WFTN that had been reported by persons in vehicles. As noted by the Commission in *Association for Community Education, Inc, 19 FCC Rcd 12682, 12687 (2004)*: “The Bureau interprets [Section 74.1203(a)] very broadly; it places no geographic or temporal limitation on complaints, and it has long held that even mobile receivers, such as automobile radios, should not be subject to interference resulting from the operation of an FM translator or booster station.”

III. W231BR’s Operation Should be Suspended Until the Interference Is Fully Eliminated

Northeast has been trying to work with Saga for the past eight months in effort to eliminate the co-channel interference that W231BR has been inflicting upon WFTN’s listeners. In February and March of this year, the Commission granted requests for Engineering STAs filed by Saga (see FCC file Nos. BSTA-20130210AAA and BSTA-20140310dg) requesting authority to operate W231BR with 0.250 kw ERP from the translator station’s existing mountaintop location and with a different directional antenna configuration. Saga advised the Commission that the STA requests were filed to address “undocumented interference complaints served informally to the applicant” --- the “undocumented” characterization is disingenuous as it flies in the face of the very extensive documentation of interference which is apparent by even a skim reading of the attached listener complaints and technical reports. In a letter dated March 13, 2014, granting the second STA request, the Audio Division warned that “Saga is responsible for addressing interference complaints that may arise from this STA operation.”

Saga now claims that the interference to WFTN has been eliminated as a result of changes made to the W231BR's antenna configuration and reduced power. Contrary to the claims of Saga, the interference has not been cured. See Fisher Declaration, Attachment G

IV. The Immutable Laws of Physics

As documented in the Technical Reports (Attachment D & E), the interference problem has not been --- and indeed, cannot be --- eliminated by a change in the orientation of W231BR's directional antenna or a reduction in the power of the translator station. There is no blinking the fact that W231BR's directional antenna directs the signal via a direct path into the Concord, New Hampshire area from the translator station's mountaintop tower site. The Technical Report points out that it would be a "physics exercise in futility" for Saga to attempt experimenting with various antenna types in an effort to remove enough radiation toward the Concord area that would eliminate the co-channel interference now being caused to the WFTN-FM signal. The operation of W231BR from the existing mountaintop tower site should cease immediately.

V. Issuance of an Order to Suspend Operations of W231BR

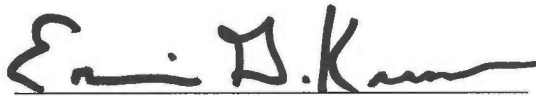
The Commission's rules do not give offending translators the right to continue causing harmful interference to full-service stations once that interference has been established. To the contrary, Section 74.1203(a) provides that "operation of the offending FM translator...shall be suspended and shall not be resumed until the interference has been eliminated." The only right an offending translator has in these circumstances is the right to make "short test transmissions...during suspended operation to check the efficacy of remedial measures." The Commission has explained: "The FM translator rules strictly prohibit interference by these secondary service stations. Accordingly, 'when convinced that a complaint or complaints of

uncorrected interference are valid...[the Commission] will direct ... [the FM translator or booster station] to discontinue operation.”³

As shown herein, numerous valid complaints of interference from W231BR continue to occur both within and outside WFTN’s protected contour. If Saga does not voluntarily cease operation of W231BR, the Commission should take **immediate** action to terminate W231BR’s operational authority pursuant to Section 74.1203(a) of the Commission’s rules. The relief mandated by Section 74.1203(a) is the immediate suspension of operation of W231BR and the revocation of its license if the interference caused WFTN is not eliminated.

Respectfully submitted,

NORTHEAST COMMUNICATIONS CORPORATION

By: 
Erwin G. Krasnow, Esq.
Garvey Schubert Barer
1000 Potomac Street, NW
Fifth Floor, Flour Mill Building
Washington, DC 20007

April 30, 2014

³ *Id.* (citing *Amendment of Part 74 of the Commission’s Rules Concerning FM Translator Stations*, 5 FCC Rcd 7212, 7230 (1990), *modified*, 6 FCC Rcd 2334 (1991), *recon. den.*, 8 FCC Rcd 5093 (1993))

DECLARATION OF JEFFREY FISHER

I, Jeffrey Fisher, declare under penalty of perjury that the following is true and correct:

1. I am President of Northeast Communications Corporation, licensee of WFTN(FM), Franklin, New Hampshire. In that role, I have first-hand knowledge of the facts set forth in the foregoing Complaint, I have reviewed the Complaint and the facts set forth therein are true and correct to the best of my knowledge and belief.

2. WFTN, which operates on channel 231, has been receiving interference from W231BR, a translator that operates co-channel with WFTN from Manchester, New Hampshire. The interference began in late August of last year and continues to the present date. Rather than file a complaint with the Commission, Northeast has been working with Saga Communications, Inc. of New England ("Saga"), the licensee of W231BR, during the past eight months in an effort to eliminate the harmful interference W231BR has been inflicting upon WFTN's listeners without the intervention of the FCC. However, despite Saga's repeated promises, the interference persists.

3. Sometime in August, 2013, Saga Communications, Inc. of New England ("Saga") was given FCC approval to move the transmitting site/antenna for Manchester, NH translator station W231BR, channel 231, from their downtown Manchester site to a mountaintop location. The mountain top operation essentially created a line of sight into Concord, New Hampshire, an integral part of the coverage area of WFTN, Franklin, New Hampshire. WFTN is a class A full-power station licensed to Northeast Communications Corporation ("Northeast") that also operates on channel 231. Within days, Northeast was swamped with phone calls, e-mails, texts and letters from listeners throughout our coverage area complaining of significant interference to the WFTN signal. Some of the listeners complained that the operation of W231BR made the WFTN signal unlistenable. Attachment A consists of eight e-mails received from listeners and a summary of comments made by telephone by over 20 listeners in late August of last year complaining about the interference caused by W231BR; in some cases, listeners complained that the interference rendered the signal of WFTN totally unlistenable.

4. On August 30, 2013, Northeast enlisted the services of Stuart Graham of Graham Brock, our consulting engineer. On September 3, 2013, Erwin Krasnow, Northeast's communications counsel, contacted Gary Smithwick, Saga's communications attorney, to inform him that listeners of WFTN had complained of recent difficulties receiving WFTN at their homes and in nearby areas while driving and that based on the text of the complaints as well as monitoring of the WFTN signal, the interference was being received from the recently modified operation of co-channel station W231BR. Attachment B. The letter to Saga's counsel communicated the willingness of Northeast to cooperate with Saga in determining whether the interference could be eliminated.

5. On September 17, 2013, Northeast's communications counsel provided Saga with the names and contact information of listeners who regularly listen to WFTN but whose ability

to hear the station was being hampered because they no longer received a clear signal from WFTN as a result of interference caused by W231BR. Attachment C. On September 19, 2013, and on numerous occasions thereafter, in letters, e-mails and phone calls to both Saga's attorney and Saga General Manager Ray Garon, Northeast requested that Saga (a) cease operation of W231BR pending resolution of the interference issues (Northeast's preferred approach), (b) eliminate the interference or (c) mitigate the extent of the interference by reducing the translator station's power. Saga repeatedly refused to do so. On two different occasions during the month of November, R. Dale Gehman, Gehman Compliance and Consulting (an engineer retained by Graham & Brock), traveled to central New Hampshire to document the destructive interference that Saga's translator was causing WFTN. On his second trip, he was accompanied by Northeast Vice President Jeffrey Levitan, Mr. Garon and Saga's engineer Peter Stohrer. Mr. Gehman advised me that both of Saga's representatives appeared to be noticeably shocked and surprised at the extent of the interference. During a "ride of the signal" that included the locations of WFTN listeners who had complained of their inability to listen to the station in the Concord area, representatives of Saga and Northeast agreed that the interference had been created by the mountain-top operation of W231BR.

6. In a letter to me dated December 4, 2013, Mr. Garon acknowledged the interference but characterized it as "minor." He urged Northeast not to involve the FCC, saying that it would be a "very time-consuming and expensive process that will begin with the filing [of] an interference complaint with the Commission" and the process "could go on for months, even a year or more if we do not work together." As of that date, Saga had repeatedly refused multiple requests made by Northeast and Graham Brock to reduce the power of W231BR. During the months of October and November 2013, Northeast had received at least 50 telephone calls complaining about interference caused by the translator station. Northeast's Concord salesperson told us that he had at least three clients complain about this "annoying interference problem." I made yet another appeal in an e-mail to Mr. Garon dated December 5, 2013, again asking that Saga reduce the translator's power level. Attachment D. I attached to my e-mail the Technical Report of Graham & Brock which documented the continuing interference caused to WFTN. One of the findings of the Report was the following:

"Even with a change to a measured 'caged element-basket type' directional antenna system – due to the direct 'view' (Path) into the Concord Area from the mountain top tower site - we believe it will be a physics exercise of futility to attempt experimenting with various antenna types in an effort to remove enough backside radiation toward the Concord Area that will successfully resolve the interference now presented to the WFTN-FM signal."

7. On December 6, 2013, Saga reduced the translator's power to 25%. The interference to WFTN, however, continued. In an e-mail sent to Mr. Garon on January 14, 2014, I commented that "there is no way for you to completely eliminate the interference into Concord by virtue of the line of sight location" and pointed out that "[e]ven at your current reduced power, there are still areas of significant interference throughout certain parts of Concord." Attachment E. Included as an attachment to my e-mail was a very comprehensive engineering report prepared by Graham Brock which, among other matters, documented the virtual

impossibility of Saga operating the translator from the current mountaintop location without causing any interference to WFTN. The report included a discussion of the existence of an alternate frequency available to Saga that would not cause any interference to WFTN. Saga, however, elected to remain at W231BR's mountain top site using a vastly reduced power level and a highly directional antenna. In an e-mail dated January 24, 2014, Mr. Garon acknowledged that there still was "a handful of limited interference spots, but nothing like when we were at full power."

8. On March 18, 2014, I sent an e-mail to Mr. Garon noting his reluctance to discontinue operations because of the audience the translator station has been serving, commenting: "I only wish you had been that sensitive to the audience we were serving, and, most importantly, to our business during the many months this has gone on." Attachment F. I then made the following statement concerning W231BR's operation pursuant to the grants by the FCC of Special Temporary Authority with lower power and a different directional orientation:

In light of the remedial measures you have taken, we are of the view that the current level of interference is acceptable, provided that the STA with which you now operate become the permanent parameters within which you will continue to operate W231BR. The current operation of W231BR, however, must be "carved in stone" as we will accept nothing less. Please know that we will continue to monitor your translator closely from a number of monitoring points at different locations. Should anything change or be changed causing any interference to resurface, we will aggressively take whatever steps necessary to protect the integrity of WFTN-FM's signal. That said, Ray, I too am glad that we were able to resolve the harmful interference problem without any FCC intervention.

9. On or about April 3, 2014, interference caused by W231BR to WFTN was once again detected. During the period beginning on April 3 and ending April 8, 2014, members of WFTN's staff monitored and "drove" the interference area four times on four different days. They found that the signal of the translator station is overtaking the WFTN signal in some of the same areas that were identified in Mr. Gehman's report. The impermissible interference continues at the Concord Hospital Campus/Pleasant Street area of Concord. Attachment ___ contains copies of e-mails which Northeast received this month from six regular listeners of WFTN who have complained about interference. Rather than eliminating interference, the current operation of the Saga translator continues to cause harmful interference to WFTN.

10. Throughout this entire period commencing with the operation of W231BR from a mountaintop site, Northeast has continued to exercise restraint and patience in its effort to work with Saga to eliminate the harmful interference to WFTN. It should be noted that throughout this lengthy period, Saga admitted, and Northeast concurred, that the W231BR translator was causing interference to WFTN. However, in the interest of a "self-resolution" without the need for FCC intervention, Northeast reluctantly agreed to accept the modest interference created by the Saga translator. See the e-mail that I sent to Mr. Garon on March 18, 2014. Attachment F. The e-mail made it clear that Northeast's willingness to accept interference was conditional, namely,

subject to the caveat that no further changes be made to either the antenna or the power of the translator station as of that date. Then, earlier this month despite Northeast's willingness to cooperate and accept some interference to WFTN (which under the FCC's rules, it doesn't have to accept), Saga abrogated its responsibilities to Northeast by making changes to the antenna and/or power, immediately restoring the harmful interference to WFTN and prompting a new round of listener letters and e-mails complaining about the interference. There are now new areas of interference along with some of the old ones that plagued Northeast during the early operation of W231BR. This is precisely what Northeast had asked Saga not to do once most of the interference had been eliminated.

11. If the past is prologue, it is clear that Saga cannot be trusted and therefore, Northeast has decided that it will not tolerate this continuing game of "cat and mouse" with Saga. We are no longer willing to accept some interference from translator W231BR. Northeast hereby requests that, in the interest of fairness to WFTN's long-time listeners, the FCC issue an immediate Cease and Desist Order to Saga which effectively shuts down W231BR until such time that Saga is able to restore service without any interference to WFTN. With the benefit of hindsight, Northeast should have filed a complaint with the Commission immediately after receiving interference complaints from WFTN's listeners of August of last year. The time is long overdue for the issuance of an order compelling Saga to suspend the operation of W231BR. Suspension of the operations of W231BR will not result in the loss of service for listeners of WZID(FM), Manchester, New Hampshire, the station which is being rebroadcast by W231BR. Saga is the licensee of W276BJ, Concord, New Hampshire, a translator that covers all of Concord and most of Manchester. Attachment H. This translator simulcasts the same programming as W231BR.

Executed this 29th day of April, 2014.



Jeffrey Fisher
President
Northeast Communications Corporation

ATTACHMENT A

From: "KATHY KENDRICK" <kklrgymn@hotmail.com>
Subject: Re: poor reception for 94.1
Date: Thu, August 29, 2013 3:57 pm
To: "fred@mix941fm.com" <fred@mix941fm.com>

Hi Fred,

We used to get 94.1 clearly at Lakes Region Gymnastics but in mid Summer, it became really difficult to listen to. Around the same time, I noticed that I couldn't get reception around the Speedway. I hope you can clear up the problem soon.

Kathy Kendrick
Lakes Region Gymnastics Academy
140 Laconia Rd. Unit 2
Belmont, NH 03220
603-524-3338

Attachments:

untitled-[2]	
Size:	0.6 k
Type:	text/html

From: "Jacquelyn drew" <jacquelynseiders@gmail.com>
Subject: signal problem
Date: Thu, August 29, 2013 4:13 pm
To: "Fred Caruso" <fred@mix941fm.com>

Hi mix,

I have been having a signal problem for a month or so. I live in Loudon and travel to Concord daily. It is very static and I am unable to listen. Hope you resolve this soon because we love mix!

Jacki Drew

7018 Hothole Pond Rd Loudon NH 03307
603-496-2396

Attachments:

untitled-[2]	
Size:	0.3 k
Type:	text/html

From: "Heidi Weymouth" <shamrocks101@hotmail.com>
Subject: Problem with radio signal
Date: Thu, August 29, 2013 4:46 pm
To: "fred@mix941fm.com" <fred@mix941fm.com>

Dear Mix 94.1 FM Staff,
I'm writing to let you know that something is wrong with your radio signal in Concord. I live in Northfield and travel to Concord weekly in the summer and listen to your station on my car radio. Sometime in August the reception of you station got poor on Loudon Road and Route 393 in Concord - there seems to be some sort of interference. I hope you can fix this in a timely matter because it's important for me to be able to listen to my local radio station so I can hear about school closings and weather updates if I am out of the local area while my kids are in school. I used to be able to get Mix 94.1 in Manchester too, I don't know if it effected down there as well.
Sincerely, Heidi J. Weymouth
81 Greenwood Drive Northfield , NH 03276603-286-9504

Attachments:

untitled-[2]	
Size:	1.2 k
Type:	text/html

From: "Clif Mills" <clif.mills@yahoo.com>
Subject: Mix941 in Concord area
Date: Thu, August 29, 2013 4:49 pm
To: fred@mix941fm.com

Fred,

Over the past few weeks I am receiving what sounds like another station covering Mix941 in and around Concord. Traveling from Northfield on I-93 or Rt 132, Mix941 becomes un-listenable as you reach Exit 16. This is also happening in the Loudon Road shopping areas, as well as the Concord Hospital area.

I have two Subaru Foresters and have the same results on each radio.

I can be reached at 603-630-3936 or clif.mills@yahoo.com. My home address is 107 Greenwood Drive, Northfield.

Thank you,

Clif Mills

From: "Paige Noelle" <paige.noelle@live.com>
Subject: Weak Signal...
Date: Thu, August 29, 2013 5:11 pm
To: "fred@mix941fm.com" <fred@mix941fm.com>

Hi Mix,

I drive Rt 106 from Belmont to Concord for work. Have for the past 7 years...

From the north end of the speedway to about the Beanstalk store, I have to change stations due to so much interference.

Then I get you guys back and things are good until about Makris's-then you're gone again until I go under the overpass on 393. Once I pass the 93 off ramps, I'm all set though Concord. (And I work by the high school.)

Hope this helps~ I hate missing the answer to the trivia question! :)

Sincerely, Paige Doucette 8 Horne Road Belmont NH 03220603.998.7321 (cell)

Attachments:

untitled-[2]	
Size:	2.1 k
Type:	text/html

From: "Kim Welch" <kwelch24@gmail.com>
Subject: Signal problem
Date: Thu, August 29, 2013 5:54 pm
To: "fred@mix941fm.com" <fred@mix941fm.com>

Hi Fred,
I've noticed that I lose signal in Concord when I'm on Loudon Rd and also 393.
Hope it improves because I love you guys!
Thanks,
Kim Welch
42 NE Village Rd
Concord, NH 03301
603-387-5362

Attachments:

untitled-[2]	
Size:	3 k
Type:	text/html

From: "Marques Milbourne" <marques.milbourne@gmail.com>
Subject: Radio Reception - Concord Area
Date: Thu, August 29, 2013 6:41 pm
To: fred@mix941fm.com

To Whom it May Concern,

As an avid listener of your radio station for many years, I am writing in regards to reception problems in the Concord area, specifically the heights. Living in Tilton, and working in Concord, I enjoy listening to your morning radio show during my commute every day. I have noticed in recent weeks that as I approach the Concord area, the station becomes full of static, and I can no longer hear the station clearly, due to another station coming in.

Myself, as with many other listeners I know in the Concord area, hope that something can be done to improve this signal and bring the station back to the exceptional signal that it's had for years in Concord.

I hope there is a fix to this, as I thoroughly enjoy listening to your radio station.

Thank you,

Marques Milbourne
5 Cedar Street
Tilton, NH 03276
857-928-0733

Attachments:

untitled-[2]	
Size:	1.1 k
Type:	text/html

Sent: Thursday, August 29, 2013 12:59 PM

Subject: Reception Problem

To the owner(s), station manager at Mix 94.1 FM,

I have been a dedicated listener to your station for over 20 years, and enjoy the format very much. I write in concern over a reception problem I have been encountering. As a resident of Concord, N.H., I have always had crystal clear reception throughout the city and beyond. However, I now notice that when I travel to the "heights" section of Concord, in particular the Route 106 area, where I travel often, another station has been coming in at 94.1 FM.

I'm not sure of the technicalities of radio broadcast, but I am hoping you can make adjustments to restore the great reception of Mix 94.1 FM to the level that I have always enjoyed.

If there are any questions please feel free to write or call.

Thank you,

Brian Burris
8 Chicory Court
Concord, N.H. 03303
603-224-3742

No virus found in this message.

Checked by AVG - www.avg.com

Version: 2013.0.3392 / Virus Database: 3211/6619 - Release Date: 08/29/13

From: "Fred Caruso" <fred@mix941fm.com>
Subject: signal comments
Date: Wed, August 28, 2013 5:30 pm
To: fred@mix941fm.com

TerriandTony Segalini I am unable to listen anymore from NHMS to 393
about an hour ago · Like

Pam McDonald Could they make it so we can listen on our iPods /iPhones ?
We use tuneIn Radio and Mix is the only one we can't get on them !!
about an hour ago via mobile · Like

Tina Manning We were having trouble getting reception in concord by taco
bell, and all the way up past the speedway other night. Kinda bummed us
out.

Thaisae Libby I've been having trouble all over the state lately
about an hour ago via mobile · Like

Heidi Swanson Weymouth I losing the signal in the Heights area of Concord
about an hour ago · Like

DJ-Chris Porter Your signal hasn't been good to the south in years! I used
to be able to get you guys up near the MA border. The problem is caused by
a translator licensed to Manchester (W231BR). They recently upgraded and
moved their transmitter to a mountain overlooking the city to give them
commercial grade coverage.
about an hour ago via mobile · Like

Colleen Krochmal I've lost y'all in Epsom
55 minutes ago via mobile · Like

Ashley Dupont Gilford by Walmart area blanks out
53 minutes ago via mobile · Like

Kim Welch Loudon road and 393
30 minutes ago via mobile · Like

Sarah GJ Since wzid 103.1 started broadcasting it has made it hard to hear
your station in concord, in I93 there is a spot where 94.1 and 103.1
battle it out, then your station is gone and its the wzid station.
24 minutes ago via mobile · Like

Kathy McHugh Kendrick I lose it from the Speedway all the way to LRGA. We
no longer get good reception in the Gym.
23 minutes ago · Like

Samantha Janos Patchy service in contoocook and on route 3 toward Franklin
... Even having issues school street Franklin
21 minutes ago via mobile · Like

Tina Lynne Boulet Between Concord & Manchester it fades
15 minutes ago via mobile · Like

Tiffany DeCarolus Hardly comes in at all on route 11 from Alton to gilford

From: "Fred Caruso" <fred@mix941fm.com>
Subject: signal comments 2
Date: Wed, August 28, 2013 5:47 pm
To: fred@mix941fm.com

Tina Lynne Boulet Between Concord & Manchester it fades
33 minutes ago via mobile · Like

Tiffany DeCarolis Hardly comes in at all on route 11 from Alton to gilford
32 minutes ago via mobile · Like

Denise Frost Heath Exit 16 in concord through the city fades in and out!
11 minutes ago via mobile · Like

Jacki Drew I have been having issues I cannot listen :-(live in Loudon
5 minutes ago via mobile · Like

Denise Carole Bodwell Yes exit 16, then on east side drive, to hazen
drive. Cannot access the radio station at all inside buildings on hazen
drive
4 minutes ago · Like

Kimberly Shedd Benoit I live in Gilmanton & work in Concord on route 106
right by Makris station barely comes in when in my car
2 minutes ago via mobile · Like

Paige Noelle From the race track to the Beanstalk on 106 and then again on
393 I have to switch stations

Fred Caruso
Program Director
Mix 94.1fm/WFTN-FM
1-888-941-1069
fred@mix941fm.com

ATTACHMENT B



WASHINGTON, D.C. OFFICE
fifth floor
flour mill building
1000 potomac street nw
washington, d.c. 20007-3501
TEL 202 965 7880 FAX 202 965 1729

OTHER OFFICES
beijing, china
new york, new york
portland, oregon
seattle, washington
GSBLAW.COM

GARVEY SCHUBERT BARER

A PARTNERSHIP OF PROFESSIONAL CORPORATIONS

Please reply to ERWIN G. KRASNOW
ekrasnow@gsblaw.com TEL EXT 2161

September 3, 2013

Gary S. Smithwick, Esq.
Smithwick & Belendiuk, PC
5028 Wisconsin Avenue, N.W.
Suite 301
Washington, DC 20016

Re: Interference Caused by W231BR

Dear Gary:

I am writing to you in your capacity as counsel for Saga Communications of New England, LLC, the licensee of FM translator station W231BR, Channel 23, Manchester, NH.

I am advised by my client, Northeast Communications Corporation, licensee of WFTN-FM, Channel 231, Franklin, NH, that listeners have complained of recent difficulties receiving WFTN-FM at their homes and in nearby areas while driving. The interference is being caused in an area where WFTN-FM has substantial listenership. These listeners indicate that they regularly listen to WFTN-FM, but that their ability to hear the station is being hampered because they no longer receive a clear signal from WFTN-FM as a result of the interference. It is apparent from the text of the complaints as well monitoring of the WFTN-FM signal in the area of interference that the interference is being received from the recently modified operation of co-channel station W231BR (see BLFT-20120801ARM, granted on August 22, 2013).

Attached is a Longley-Rice map prepared by Stu Graham, Northeast Communications Corp.'s consulting engineer, which shows the area of predicted interference. Stu believes that the interference area depicted on the map may be significantly larger. As you are aware, WFTN-FM is protected under the FCC's rules from interference regardless of the strength of the station's signal. Section 74.1203(a) prohibits "actual interference to ... [t]he direct reception by the public of off-the-air signals of any broadcast station." The rule is clear that a translator, as a secondary service, is not to cause interference to a full-service station.

Section 74.1203(a) states that if interference caused by a translator station cannot be properly eliminated by suitable techniques, the operation of the translator station will be suspended. My client is willing to cooperate with Saga in determining whether the interference can be eliminated. In that connection, we would be willing to identify the complainants and to have Stu Graham work with Saga's engineers to eliminate the interference.



Mr. Gary Smithwick
September 3, 2013
Page 2

Time is of the essence.

Please give me a call to discuss next steps.

Sincerely,

Erwin G. Krasnow

EGK:yg

Enclosure

cc: Jeff Fisher
R. Stuart Graham, Jr.

DC_DOCS:714694.1

ATTACHMENT C

From: Erwin Krasnow [mailto:ekrasnow@gsblaw.com]
Sent: Tuesday, September 17, 2013 11:16 AM
To: Gary Smithwick
Cc: Mr. Jeff Fisher; Levitan, Jeff; Caruso, Fred; Stu Graham
Subject: Interference to WFTN-FM Caused by W231BR
Importance: High

Gary:

This is a follow-up to my letter to you under date of September 3, 2013, advising that listeners of WFTN-FM, Channel 231, Franklin, NH, have complained of recent difficulties receiving the station at their homes and in nearby areas while driving. The interference is being caused in an area where WFTN-FM has substantial listenership. These listeners indicate that they regularly listen to WFTN-FM, but that their ability to hear the station is being hampered because they no longer receive a clear signal from WFTN-FM as a result of interference from co-channel station W231BR, Manchester, NH. It is apparent from the text of the complaints as well monitoring of the WFTN-FM signal in the area of interference that the interference is being received from the recently modified operation of W231BR (see BLFT-20120801ARM, granted on August 22, 2013).

You indicated that Saga Communications of New England, LLC ("Saga") does not take complaints of co-channel interference lightly and that it is committed to cooperating with Northeast Communications Corp. ("Northeast") in promptly determining whether the interference can be eliminated. In that connection, you asked that my client provide you with the names and contact information of the listeners who have complained about interference.

Per your request, I am attaching such a list. Please be advised, however, that **the list is being provided to Saga subject to the condition that none of the listeners be contacted without the knowledge and participation of a representative of WFTN-FM.** There are two reasons why such a condition precedent is being required.

- My client wants to avoid a situation which occurred several years ago when Saga unilaterally contacted listeners of WFTN-FM who complained about translator interference and tried to intimidate them from allowing Northeast to file their complaints with the FCC.

- Northeast regards elimination of interference as a joint endeavor. It is in Saga's interest to be part of a fair and prompt complaint resolution process. As you are well aware, Section 74.1203(a) of the FCC's rules states that if interference caused by a translator station cannot be properly eliminated by suitable techniques, the operation of the translator station will be suspended. It is in Northeast's interests to eliminate interference at the earliest possible time because of the loss of listenership in WFTN-FM's core service area. Every day that the interference persists, WFTN-FM loses valuable listeners. Northeast finds this situation intolerable.

Here are Northeast's suggested ground rules for use of the attached list by Saga:

1. A marked copy of any e-mails to the complainants must be sent to Jeff Fisher, jefff@mix941fm.com, Jeff Levitan, jefflevitan@metrocast.net, and Fred Caruso, fred@mix941fm.com.
2. All telephone contacts with complaints must be by way of conference calls.
3. No in-person contact should be made without the presence of a representative of Northeast.

To schedule a conference call or an in-person visit, Saga should send an e-mail to the three individuals identified above to arrange for a mutually convenient date and time.

As a first step in the cooperative efforts of our clients to eliminate the destructive co-channel interference, we recommend that Saga's chief engineer for the Manchester cluster "drive" the WFTN-FM coverage area together with Jeff Levitan. **It is our desire that the drive be completed before the end of the week.** To validate the accuracy of this activity, Northeast requests that Saga's chief engineer provide an affidavit (or a declaration under penalty of perjury) assuring that no changes have been made in the operation of W231BR (e.g., power output, directional antenna, location, etc.) prior to the time that our clients "drive the signal."

Because time is of the essence, we request that Saga provide Northeast with a time table concerning its plans to contact listeners of WFTN-FM and to resolve the interference being caused by W231BR to WFTN-FM.

The goal of the process is for our clients to work together to achieve a fair and prompt resolution process without Commission intervention. See Radio Power, Inc., DA 11-1727, released October 18, 2011.

Feel free to give me a call to discuss the mechanics of a cooperative process.

Thanks.

All the best,

Erwin

ERWIN G. KRASNOW

Partner | 202.298.2161 Tel | 202.965.1729 Fax | ekrasnow@gsblaw.com

202 276.4058 Mobile | 202 338.2181 Home

GARVEY SCHUBERT BARER | 5th Floor | 1000 Potomac Street NW | Washington, DC 20007 | ► GSBLaw.com

Unless expressly stated otherwise, any federal tax advice contained in this communication (including attachments) is not intended to be used, and cannot be used, for the purpose of avoiding federal tax penalties.

This e-mail is for the sole use of the intended recipient(s). It contains information that is confidential and/or legally privileged. If you believe that it has been sent to you in error, please notify the sender by reply e-mail and delete the message. Any disclosure, copying, distribution or use of this information by someone other than the intended recipient is prohibited.

Listener List

Name	Address	Phone number	Email
Kathy Kendrick	Lakes Region Gymnastics Academy, 140 Laconia Rd., Unit 2 Belmont, NnH 03220	603-524-3338	kklgymn@hotmail.com
Jacquelyn Drew	7018 Hothole Pond Rd., Loudon, NH 03307	603-496-2396	jacquelynseiders@gmail.com
Heidi J. Weymouth	81 Greenwood Drive, Northfield, NH 03276	603-286-9504	Shamrocks101@hotmail.com
Clif Mills	107 Greenwood Drive, Northfield	603-630-3936	Clif.mills@yahoo.com
Paige Doucette	8 Horne Road, Belmont, NH 03220	603-998-7321	Paige.noelle@live.com
Kim Welch	42 NE Village Rd. Concord, NH 03301	603-387-5362	Kwelch24@gmail.com
Marques Milbourne	5 Cedar Street Tilton, NH 03276	857-928-0733	Marques.milbourne@gmail.com
Brian Burris	8 Chicory Court, Concord, NH 03303	603-224-3742	
Terri and Tony Segalini	(Facebook posting, see attached)		
Pam McDonald	(Facebook posting, see attached)		
Tina Manning	(Facebook posting, see attached)		
Thaisae Libby	(Facebook posting, see attached)		
Hedi Swanson Weymouth	(Facebook posting, see attached)		
DJ- Chris Porter	(Facebook posting, see attached)		
Colleen Krochmal	(Facebook posting, see attached)		
Ashley Dupon Gilford	(Facebook posting, see attached)		
Kim Welch	(Facebook posting, see attached)		
Sarah GJ	(Facebook posting, see attached)		
Kathy McHugh Kendrick	(Facebook posting, see attached)		
Samantha Janos	(Facebook posting, see attached)		
Tina Lynne Boulet	(Facebook posting, see attached)		
Tiffany DeCarolis	(Facebook posting, see attached)		

From: "Fred Caruso" <fred@mix941fm.com>
Subject: signal comments
Date: Wed, August 28, 2013 5:30 pm
To: fred@mix941fm.com

TerriandTony Segalini I am unable to listen anymore from NHMS to 393
about an hour ago · Like

Pam McDonald Could they make it so we can listen on our iPods /iPhones ?
We use tuneIn Radio and Mix is the only one we can't get on them !!
about an hour ago via mobile · Like

Tina Manning We were having trouble getting reception in concord by taco
bell, and all the way up past the speedway other night. Kinda bummed us
out.

Thaisae Libby I've been having trouble all over the state lately
about an hour ago via mobile · Like

Heidi Swanson Weymouth I losing the signal in the Heights area of Concord
about an hour ago · Like

DJ-Chris Porter Your signal hasn't been good to the south in years! I used
to be able to get you guys up near the MA border. The problem is caused by
a translator licensed to Manchester (W231BR). They recently upgraded and
moved their transmitter to a mountain overlooking the city to give them
commercial grade coverage.
about an hour ago via mobile · Like

Colleen Krochmal I've lost y'all in Epsom
55 minutes ago via mobile · Like

Ashley Dupont Gilford by Walmart area blanks out
53 minutes ago via mobile · Like

Kim Welch Loudon road and 393
30 minutes ago via mobile · Like

Sarah GJ Since wzid 103.1 started broadcasting it has made it hard to hear
your station in concord, in I93 there is a spot where 94.1 and 103.1
battle it out, then your station is gone and its the wzid station.
24 minutes ago via mobile · Like

Kathy McHugh Kendrick I lose it from the Speedway all the way to LRGA. We
no longer get good reception in the Gym.
23 minutes ago · Like

Samantha Janos Patchy service in contocook and on route 3 toward Franklin
... Even having issues school street Franklin
21 minutes ago via mobile · Like

Tina Lynne Boulet Between Concord & Manchester it fades
15 minutes ago via mobile · Like

Tiffany DeCarolis Hardly comes in at all on route 11 from Alton to gilford

From: "Fred Caruso" <fred@mix941fm.com>
Subject: signal comments 2
Date: Wed, August 28, 2013 5:47 pm
To: fred@mix941fm.com

Tina Lynne Boulet Between Concord & Manchester it fades
33 minutes ago via mobile · Like

Tiffany DeCarolis Hardly comes in at all on route 11 from Alton to gilford
32 minutes ago via mobile · Like

Denise Frost Heath Exit 16 in concord through the city fades in and out!
11 minutes ago via mobile · Like

Jacki Drew I have been having issues I cannot listen :-(Live in Loudon
5 minutes ago via mobile · Like

Denise Carole Bodwell Yes exit 16, then on east side drive, to hazen
drive. Cannot access the radio station at all inside buildings on hazen
drive
4 minutes ago · Like

Kimberly Shedd Benoit I live in Gilmanton & work in Concord on route 106
right by Makris station barely comes in when in my car
2 minutes ago via mobile · Like

Paige Noelle From the race track to the Beanstalk on 106 and then again on
393 I have to switch stations

Fred Caruso
Program Director
Mix 94.1fm/WFTN-FM
1-888-941-1069
fred@mix941fm.com

ATTACHMENT D

Good Evening Ray:

I only just received the attached report from Stu Graham on November 26th. This should have been sent to you simultaneously. I apologize for the delay in getting this to you. I'm sorry we were unable to resolve anything this afternoon during our phone conversation. In your letter you refer to our complaint of "minor interference." That is a gross understatement of the interference problem. There are areas of Concord, heretofore our coverage areas, which are now completely replaced by your translator. Try driving by the Concord Hospital on Pleasant Street, for example. The interference caused by your translator is neither "minor" nor "dramatically and markedly improved" as suggested in your letter. That is only one example of the many continuing interference problem areas. As regards your assertion that we never sent your attorney a list of the complainants, I believe, if you check, we sent him that list quite some time ago. We drove to all of those addresses on November 19th and 20th after receiving your e-mail indicating that everything was fixed. All of the interference problems remained and they were still not "minor." A list of new complaints will be sent along shortly. Despite the fact that this problem has gone on since August, we have remained extremely patient and have worked very hard to cooperate with you and have asked repeatedly that, in good faith, you either shut the translator down or dramatically reduce its power so as to correct your illegal interference. This you have repeatedly refused to do. You have left us very little choice.

Sincerely,

Jeff Fisher
President & General Manager
Northeast Communications Corporation

WFTN / WSCY / WPNH

Sent from my iPad

Begin forwarded message:

TECHNICAL REPORT
WFTN-FM vs. W231BR (FX)
FRANKLIN, NEW HAMPSHIRE
November 2013

Northeast Communications Corporation (“Northeast”), licensee of FM broadcast station WFTN-FM, was made aware of interference to the station’s signal by upset Advertisers and Listeners who reported significant reception problems that began in August 2013 – which coincides with the newly authorized operation of Translator Station W231BR (FX) from a mountaintop tower site. Based upon the written complaints received, WFTN-FM personnel drove to the ‘areas of complaint’ - and confirmed that the operating facilities of W231BR (FX) from the new mountain top site had a dramatic and detrimental effect upon an existing Advertiser/Listening base of WFTN-FM throughout the extended Concord, New Hampshire area.

W231BR (FX)’s newly licensed mountain top Antenna Site provided the Translator with a dramatic increase in the antenna’s Height Above Average Terrain as compared to the original site licensed in September of 2007 and the interim site licensed in December of 2008. However, even the original W231BR (FX) Site 1, as noted below, had the potential to present some degree of interference to WFTN-FM as computed by a more accurate terrain based propagation model than is in use by the FCC.

Translator Station W231BR (FX) has migrated thru three sites since first licensed as follows;

- a). **W231BR (FX) Site 1;** licensed on September 5, 2007, specified an ERP of 100 watts, NON-Directional, with an antenna height above sea level of 71 Meters. **“SEE EXHIBIT ONE”**
- b). **W231BR (FX) Site 2;** licensed on December 17, 2008, specified an ERP of 250 watts, Directional, with an antenna height above sea level of 179 Meters. **“SEE EXHIBIT TWO”**
- c). **W231BR (FX) Site 3;** (Existing Site) licensed on August 22, 2013, specifies an ERP of 250 watts, Directional, with an antenna height above sea level of 411 Meters. **“SEE EXHIBIT THREE”**

[See applicable ‘Exhibit’ PDFs showing the computed interference to WFTN-FM from each Site above.]

Translator Facilities are a secondary service subject to protecting a Full Service Station's Listeners – **regardless of the signal level presented by the Full Service Station.** This Technical Report documents a site visit to the Concord, New Hampshire, area on November 7, 2013, and the observations made from the 'driving of the WFTN-FM signal' with the following station representatives present; Mr. Jeffrey Levitan ("Jeffrey"), Vice-President/GSM of WFTN-FM; Mr. Raymond R. Garon ("Ray"), President/GM of W231BR (FX) and Mr. Peter Stohrer ("Peter"), Chief Engineer of W231BR (FX). The Graham Brock, Inc., representative, R. Dale Gehman ("Dale"), accompanied the above noted station representatives during the joint 'Driving of the WFTN-FM Signal' and also conducted a site visit to the W231BR (FX) Tower Site. WFTN-FM is licensed to Franklin, New Hampshire, on Channel 231A, 94.1MHz and W231BR (FX) is licensed to Manchester, New Hampshire, on Channel 231D as secondary service – HD2 fill in Translator.

On November 7th at 9AM, Dale met with Ray and Peter at the Park & Ride lot near Exit 17 just off of Interstate 93, north of Concord. Peter requested that Dale joins them in the W231BR (FX) Station Vehicle to 'Ride the WFTN-FM Signal' so that he could use the same station vehicle in the future to better determine if any adjustments to the Translator had resolved the Interference from W231BR (FX) to WFTN-FM. We then drove to the 8 Chicory Court, Concord, NH 03003* address and noted only occasional WFTN-FM multi-path on the Station Vehicle's Radio and returned to Park & Ride at Exit 17.

***NOTE:** Email Complainant at 8 Chicory Court, Concord, NH 03003, stated they now receive interference listening to WFTN-FM when driving in the Concord Area – so their home street address is not an applicable reference point to exhibit interference from W231BR (FX).

Dale then requested that Ray and Peter move to his vehicle and ride to the same street address to insure both vehicles radios were tracking WFTN-FM in a similar manner. No significant differences were noted between the two different vehicle radios when driving the same route to the point noted above

and we returned to the Park & Ride Lot, near Exit 17, I93 and transferred to the W231BR (FX) station vehicle for the remainder of the formal 'Ride of the WFTN-FM Signal.'

LOG of the 'Ride of the WFTN-FM Signal' in the W231BR STATION VEHICLE 11-7-13;

- A). Drove from Park & Ride, Exit 17, I93 to 140 Laconia Road, Belmont, NH, noting WFTN-FM multipath to near Route 106 and increasing interference from W231BR (FX) along Route 106 from the intersection with Route 129 north toward and throughout the NH Raceway area and up to near Belmont on Route 106. Without question, W231BR (FX) created significant interference along Route 106 within two miles either side of the NH Raceway. At the noted address - WFTN-FM was received without a problem on the vehicle radio. Since the Email Complainant also specified problems listening to WFTN-FM while driving on Route 106, Peter turned off the Translator and we drove south on Route 106. Although there was significant multi-path along Route 106, WFTN-FM was present on the vehicle radio with the exception of one point just south of the NH Raceway when an unidentified signal appeared briefly. (SEE EXHIBIT FOUR)
- B). Drove to 'Resident #1' detailed on the September 2013 Report by GBI with the **Translator Turned Off**. Upon arriving at 'Resident #1' the vehicle radio had a clear signal when stationary from WFTN-FM. Once W231BR (FX) was turned back on, WFTN-FM was lost and the Translator completely captured the vehicle radio when not in motion.
- C). Drove from 'Resident #1' via Route 106 to I-393 to the parking lot of the Everette Area and observed significant interference from W231BR (FX) along Route 106 and extensive interference along I-393. Upon arrival at Everette Area, Jeffrey Levitan met us and Jeffrey and Ray had an extended conversation regarding the problems that WFTN-FM has experienced due to the Translator's

operation from the mountain top site. Jeffrey, Dale, Peter and Ray then rode together in the W231BR (FX) station vehicle and drove the East Concord Business District that was previously documented in the September 2013 Report.

D). The East Concord Business District was driven from the Everette Area to near the intersection with Route 106 as documented in the September 2013 GBI Report. Extreme interference was present from W231BR (FX) and at times no one in the vehicle could figure out exact which station was captured by the vehicle radio due to similar musical formats. W231BR (FX) was turned off and the result was only WFTN-FM was present on the vehicle radio throughout the East Concord Business District; although, there was severe multipath on the WFTN-FM signal when the vehicle was in motion with the Translator turned off. We then proceeded to the Concord Hospital Complex from the East Concord Business District. (SEE EXHIBITS FIVE AND SIX)

E). The Concord Hospital District was driven as documented in the September GBI Report with W231BR (FX) operating and driven once again with the Translator station turned off. There was extreme interference with the Translator operating; however, when W231BR (FX) was turned off, WFTN-FM was present on the vehicle radio although with significant multipath when the vehicle was moving. We then drove back to the Everette Arena and dropped off Jeffrey.
(SEE EXHIBITS SEVEN AND EIGHT)

F). From the Everette Area, we drove to 'Resident #2' documented in the September GBI Report and experienced severe interference from W231BR when the vehicle was moving and even a slight movement of the vehicle in the parking lot location would either lose or restore WFTN-FM on the vehicle radio. (SEE EXHIBIT NINE)

- G). From Resident #2 we drove to 'Resident #4' as documented in the September GBI Report and noted moderate interference when driving; however, at the resident #2 location, WFTN-FM was clear when the vehicle was not moving. (SEE EXHIBIT NINE)
- H). From Resident #4 we drove to 'Resident #3' as documented in the September GBI Report and noted occasional interference from W231BR when the vehicle was moving; however, WFTN-FM was clear when the vehicle was parked at the Resident #3 location. (SEE EXHIBIT NINE)
- I). From Resident #4 we returned to the Park & Ride Lot near Exit 17 of I93 and concluded the 'Drive of the WFTN-FM Signal' in the W231BR (FX) station vehicle.

W231BR (FX) TOWER SITE DOCUMENTATION:

Following the conclusion of the 'Ride of the WFTN-FM Signal' in the W231BR (FX) station vehicle, Dale proceeded in his vehicle to the W231BR (FX) Tower Site.

The following measurements were conducted at the W231BR (FX) Tower Site: (SEE EXHIBIT TEN)

- A). Measured the W231BR (FX) 3-Section YAGI Antenna Array's height above ground level to be 18 Meters which is in agreement with the W231BR (FX) Station License.
- B). Measured the W231BR (FX) Tower Coordinates and found them to be accurate within 0.1 second of specified licensed coordinates.
- C). Confirmed NONE of the W231BR (FX) YAGI Antennas are mounted on the North Tower Face.
- D). Measured* orientation of each YAGI of the W231BR (FX) 3-Section Antenna Array;
Yagi Element #1: Radian 4736 = 86 Degrees*
Yagi Element #2: Radian 6130 = 164 Degrees*
Yagi Element #3: Radian 1533 = 266 Degrees*

*NOTE: Radian Measurements above are to be construed only as a 'relative' indication as an acceptable measurement distance from the tower could not be achieved due obstructions.

NOTE: The Licensee of W231BR (FX) would not permit entrance into the Transmitter Building to obtain an on-site observation of the Translator's Transmitter Power Output and the related request by Dale to measure the Translator's Transmitter Power Output with a calibrated Bird In-Line Wattmeter was denied. **Therefore, this 'Technical Report' does not present any opinion as to if W231BR (FX) is operating within tolerance of the licensed Transmitter Power Output.**

OBSERVATION AND CONCLUSIONS FROM THE CONCORD AREA VISA ON NOVEMBER 7, 2013:

- 1). The mountain top tower on which the W231BR (FX) Directional Antenna Array is mounted enables for the first time in the operating history of this Translator - a direct 'view' (Path) into the Concord Area.
- 2). The W231BR (FX) Directional Antenna Array – although compiled from a measured pattern by the antenna manufacture – is only a relative indication of an estimated pattern that should be produced by the 3 YAGI Array mounted on a tower. An actual measured pattern based upon accurately replicating the exact supporting structure's dimensions and also modeling all of the devices currently mounted on the structure, plus modeling the 45 Degree 'tilt' of the YAGI Antenna Array would be required to determine the exact radiation that is being emitted toward the Concord Area.
- 3). Even with a change to a measured 'caged element - basket type' directional antenna system - due to the direct 'view' (Path) into the Concord Area from the mountain top tower site – we believe it will be a physics exercise of futility to attempt experimenting with various antenna types in an effort to remove enough backside radiation toward the Concord Area that will successfully resolve the interference now presented to the WFTN-FM signal.

4). Raymond R. Garon, President/GM of W231BR (FX), stated during and after the joint 'Ride the WFTN-FM Signal' exercise – **that the Licensee of W231BR (FX) had no intent of creating any interference to the WFTN-FM and the Licensee's goal is to provide service only to the Manchester Area.** [The HD2 rebroadcast presented on W231BR (FX) is also present on the Licensee's Concord Area Translator W276BJ, operating on 103.1MHz – so there is no reason to desire a 94.1MHz signal into Concord.]

IN LIGHT OF THE ABOVE NOTED FINDINGS AND IN CONCURRENCE WITH THE INITIAL 'GBI' REPORT OF SEPTEMBER 2013, WE HEREBY CONCLUDE:

A). Due to the actual signal level from WFTN-FM being much lower than predicted, the FCC's Allocation Model of predicted interference by a Translator Stations to Full Service Station can NOT be used in the Concord Area to accurately determine harmful interference from W231BR (FX) to WFTN-FM.

B). Although WFTN-FM has a poor signal in some areas of Concord due to severe multi-path, the Station still had maintained very loyal and dedicated Advertisers and Listeners in the Concord Area - who are now disenfranchised by the severe interference that started the moment W231BR (FX) began operating from the mountain top Tower Site.

C). Representative from both WFTN-FM and W231BR (FX) have observed and mutually agreed that Interference has been created by the mountain top operation of W231BR (FX) as exhibited during a 'Ride of the Signal' by the Station Representatives on November 7, 2013. Further, the Licensee's Representative of W231BR (FX) expressed unconditionally during the meeting of parties that there was no intent on the Licensee's part to create any interference to WFTN-FM and that such interference would be resolved.

THEREFORE:

D). The operation of W231BR (FX) from the existing mountain top tower should cease immediately and W231BR (FX) should revert back to one of the previous authorized transmit locations under FCC STA to continue service to the Manchester Area.

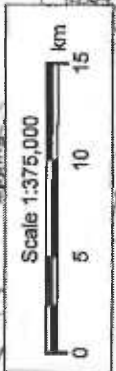
E). Any future proposed W231BR (FX) site must NOT have the elevation that provides a clear 'view' (Path) into the Concord Area. By utilizing the advantage of the Manchester area terrain, a new site for W231BR (FX) should be achievable that will also afford full terrain blockage toward the Concord Area and protect WFTN-FM's Advertisers and Listeners.

We have tried to be as accurate as possible in the preparation of this report. Should there be any questions concerning the information contained herein, we welcome the opportunity to discuss the matter by phone (912) 638-8028.

EXHIBIT ONE

GRAHAM BROCK, INC.
BROADCAST TECHNICAL CONSULTANTS

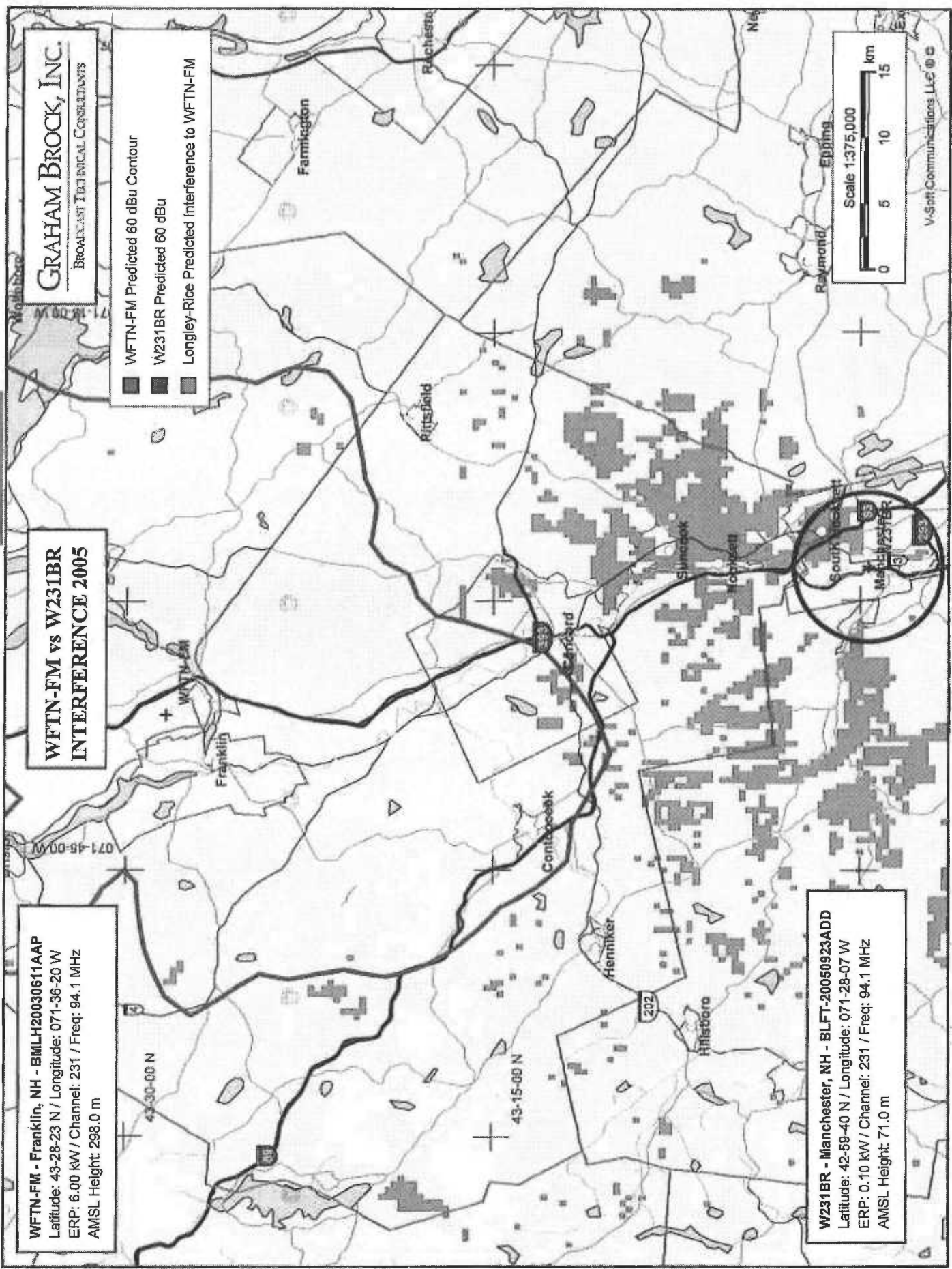
- WFTN-FM Predicted 60 dBu Contour
- W231BR Predicted 60 dBu
- Longley-Rice Predicted Interference to WFTN-FM



WFTN-FM vs W231BR INTERFERENCE 2005

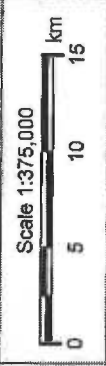
WFTN-FM - Franklin, NH - BMLH20030611AAP
Latitude: 43-28-23 N / Longitude: 071-36-20 W
ERP: 6.00 kW / Channel: 231 / Freq: 94.1 MHz
AMSL Height: 298.0 m

W231BR - Manchester, NH - BLFT-20050923ADD
Latitude: 42-59-40 N / Longitude: 071-28-07 W
ERP: 0.10 kW / Channel: 231 / Freq: 94.1 MHz
AMSL Height: 71.0 m



GRAHAM BROCK, INC.
BROADCAST TECHNICAL CONSULTANTS

- WFTN-FM Predicted 60 dBu Contour
- W231BR Predicted 60 dBu
- Longley-Rice Predicted Interference to WFTN-FM



V-Soft Communications LLC ©

WFTN-FM vs W231BR INTERFERENCE 2008

WFTN-FM - Franklin, NH - BMLH20030611AAP
 Latitude: 43-28-23 N / Longitude: 071-36-20 W
 ERP: 6.00 kW / Channel: 231 / Freq: 94.1 MHz
 AMSL Height: 298.0 m

W231BR - Manchester, NH - BLFT-20081020ANK
 Latitude: 43-00-45 N / Longitude: 071-26-30 W
 ERP: 0.25 kW / Channel: 231 / Freq: 94.1 MHz
 AMSL Height: 179.0 m

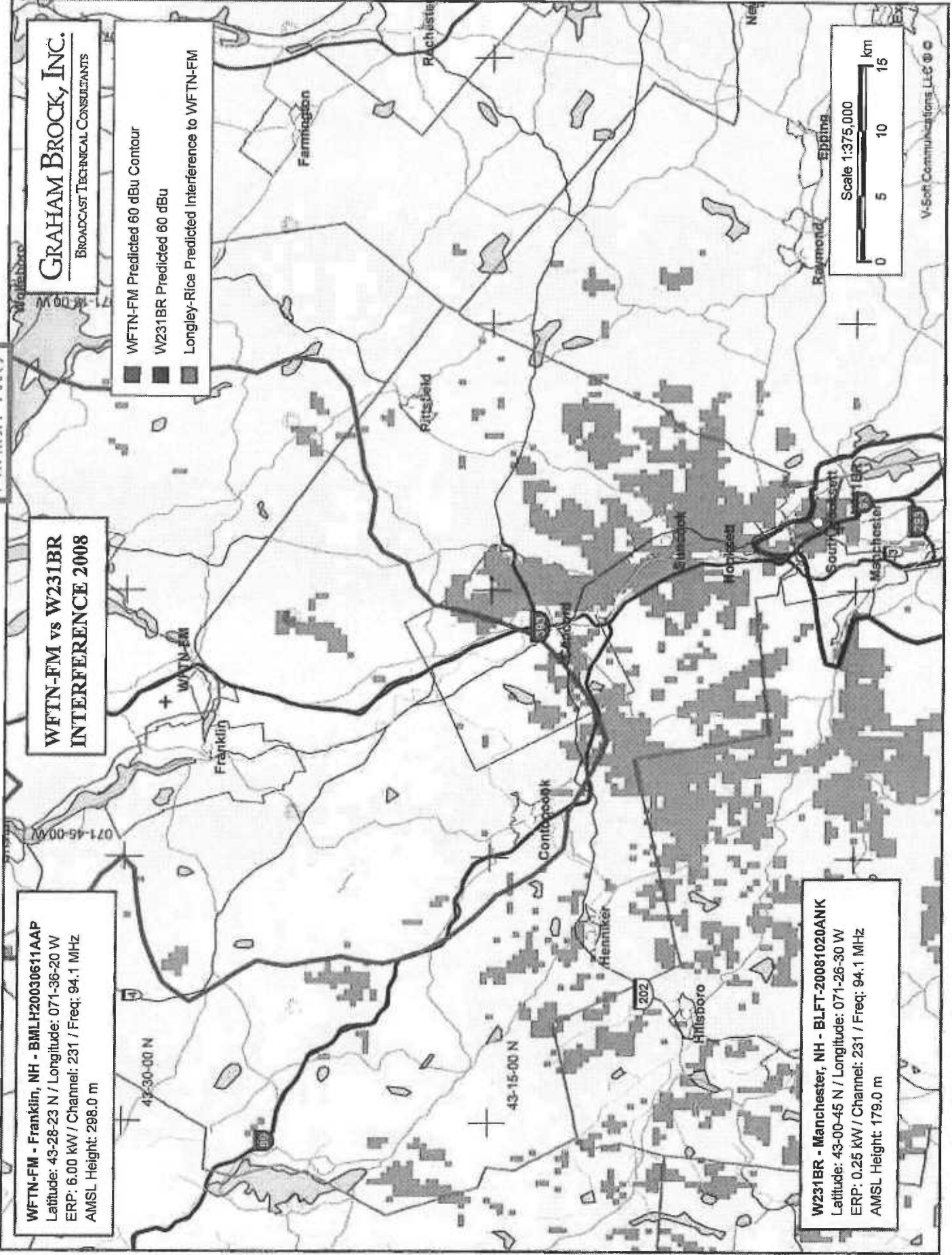


EXHIBIT THREE

GRAHAM BROCK, INC.
BROADCAST TECHNICAL CONSULTANTS

- WFTN-FM Predicted 60 dBu Contour
- W231BR Predicted 60 dBu
- Longley-Rice Predicted Interference to WFTN-FM

**WFTN-FM vs W231BR
INTERFERENCE 2013**

WFTN-FM - Franklin, NH - BMLH20030611AAP
Latitude: 43-28-23 N / Longitude: 071-36-20 W
ERP: 6.00 kW / Channel: 231 / Freq: 94.1 MHz
AMSL Height: 298.0 m

W231BR - Manchester, NH - BLFT20130801ARM
Latitude: 42-59-02 N / Longitude: 071-35-22 W
ERP: 0.25 kW / Channel: 231 / Freq: 94.1 MHz
AMSL Height: 411.0 m



V-Soft Communications LLC ©

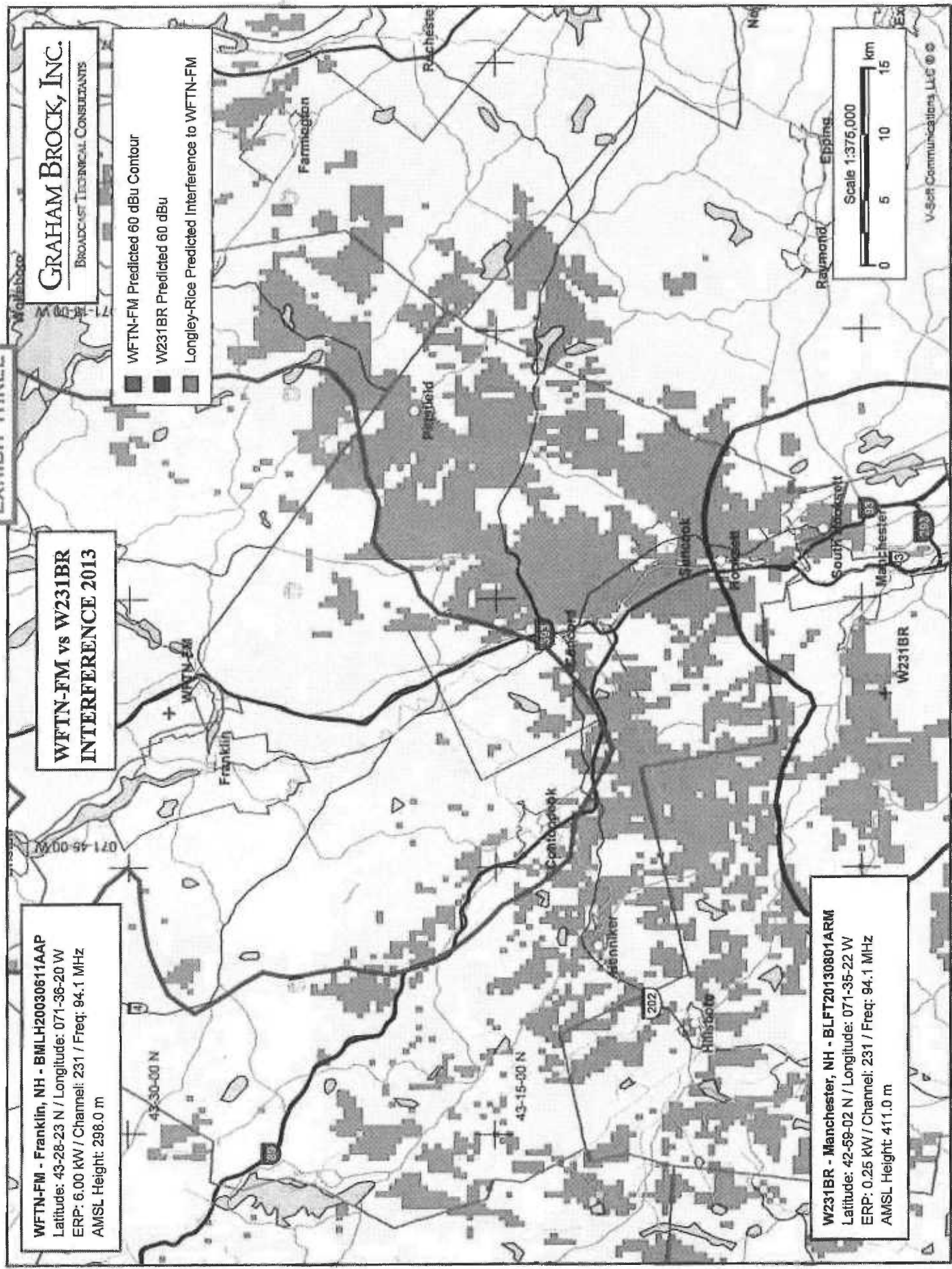


EXHIBIT FOUR



Ray-Peter-Dale
Drove Route 106 on
11-7-13

Google earth

Google earth



Driving Recording #4 ROUTE leading to NH International Raceway
Recorded on 9-28-13

EXHIBIT SIX



Ray-Peter-Jeff-Dale Drove
This Route 11-7-13 MAIN
BUSINESS DISTRICT EAST
SIDE OF CONCORD

Google earth

feet
km



DRIVING AUDIO #3 ROUTE; Main Business District EAST Side of CONCORD
RECORDED 9-28-13

EXHIBIT SEVEN



ROUTE DRIVEN
WITH RAY,
PETER, JEFF &
DALE 11-7-13

Google earth

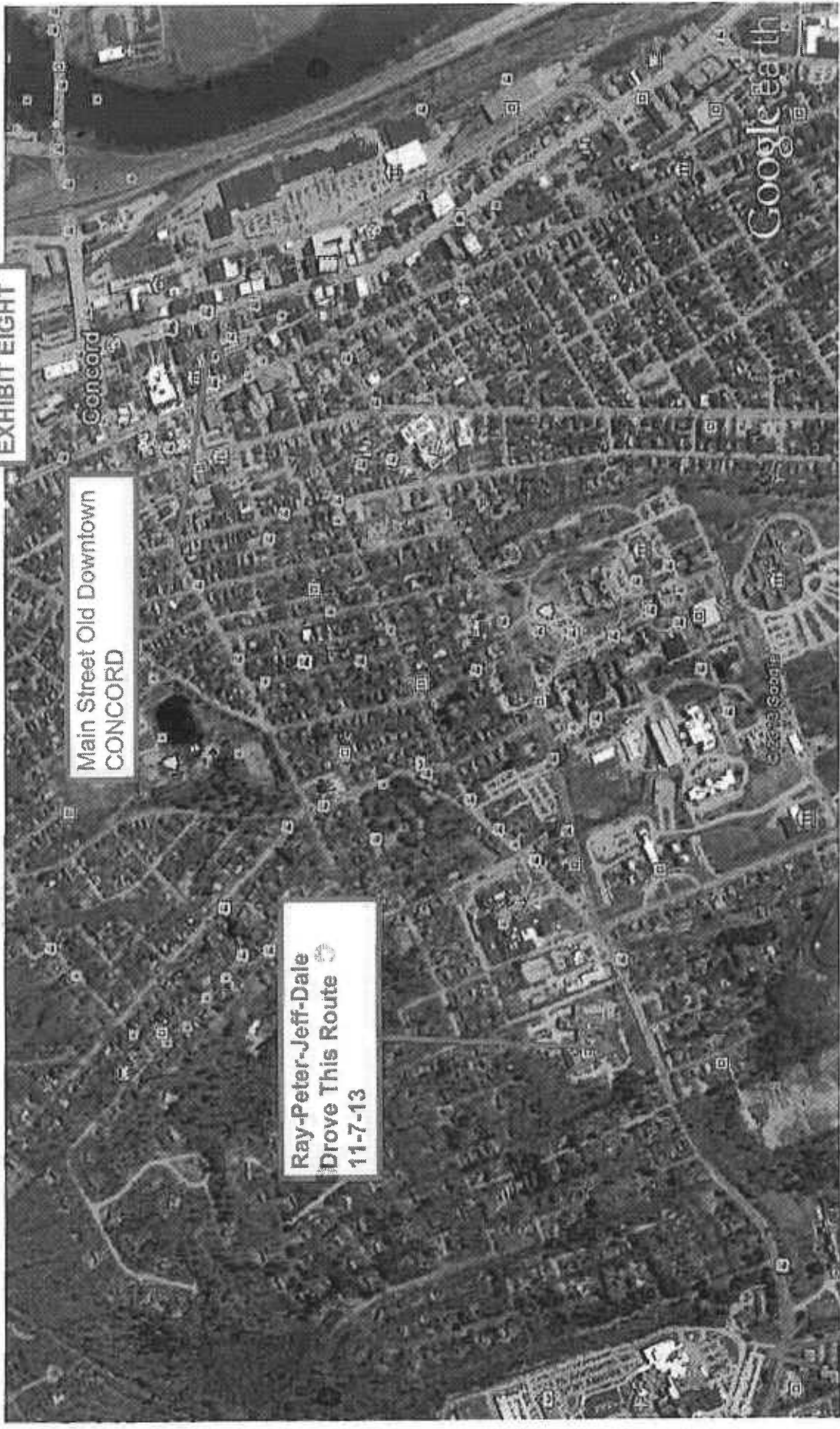


Concord Hospital Campus; Driving Audio #1 Recorded on 9-28-13

EXHIBIT EIGHT

Main Street Old Downtown
CONCORD

Ray-Peter-Jeff-Dale
Drove This Route
11-7-13



INTERFERENCE OBSERVED ON CAR RADIO WHEN DRIVING THIS ROUTE

Google earth

Hospital Campus

EXHIBIT NINE



Google earth



Driving Audio Recording #5 ROUTE; From Residence #3 to Residence #4 to Residence #2
RECORDED ON 9-28-13

EXHIBIT TEN

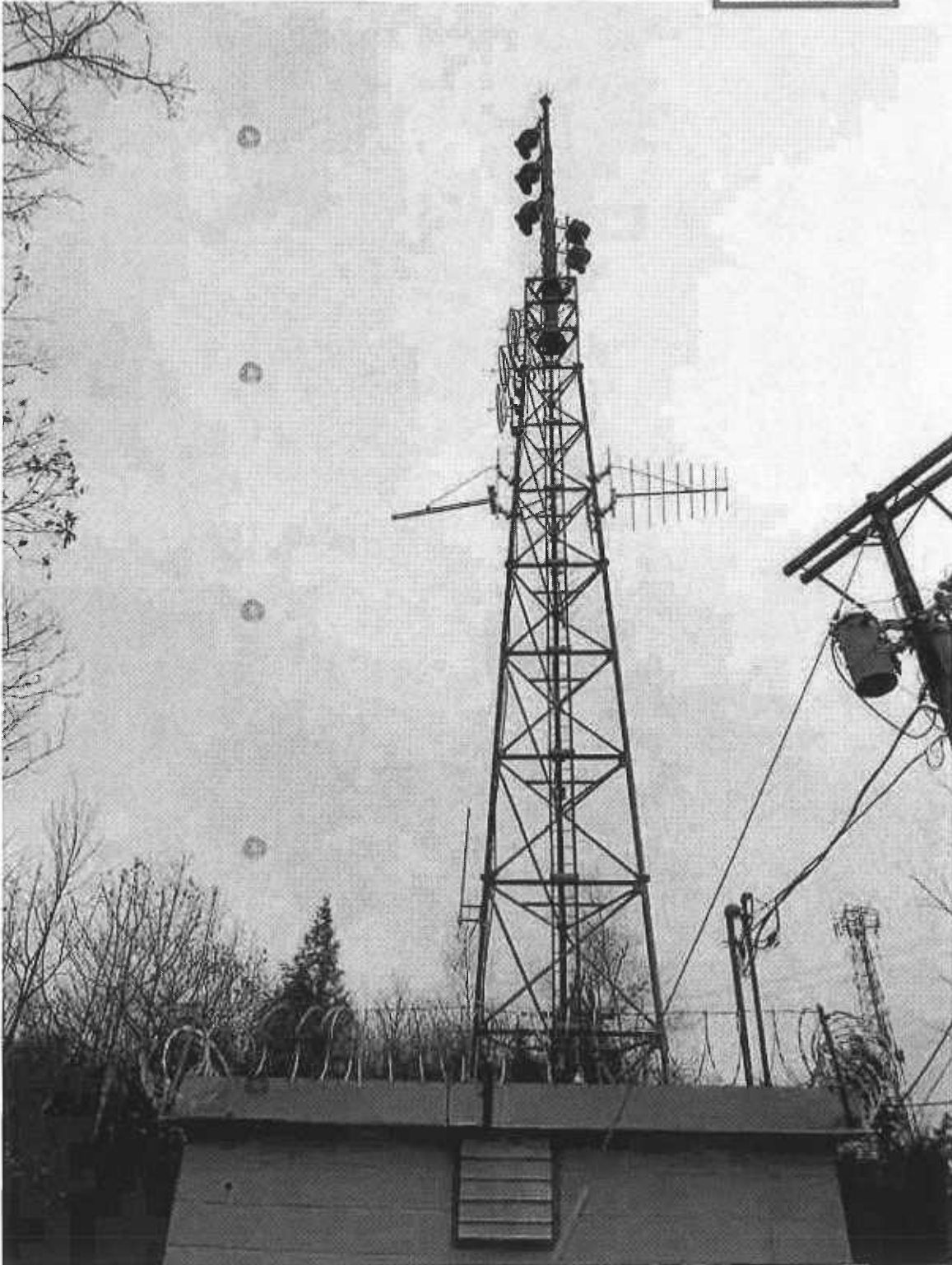


Photo Taken at 3200 Radian referenced to the tower base location...the TOWER FACE shown is facing 360 deg North. The W231BR Antenna Array is NOT pointed toward Concord. 11-7-13 RDG

ATTACHMENT E

-----Original Message-----

From: Jeff Fisher [mailto:jefff@mix941fm.com]

Sent: Tuesday, January 14, 2014 5:32 PM

To: 'Ray Garon'

Cc: 'gsmithwick@fccworld.com'; Erwin G. Krasnow (ekrasnow@gsblaw.com);

'dgehman@gradiotv.com'

Subject: FW: WFTN-FM Report of Progress

Good Afternoon Ray:

As promised, at long last I am happy to send along the attached report from Stu Graham. As you will read, he has determined that your current mountaintop location for translator W231BR is simply not going to work satisfactorily because, he has concluded, there is no way for you to completely eliminate the interference into Concord by virtue of the line of sight location. Even at your current reduced power, there are still areas of significant interference throughout certain parts of Concord. However, this report is not without good news for Saga. Not only has he determined that other locations in the greater Manchester area would work for you while eliminating interference for us, but, most importantly, he has found you another frequency (93.9) that would work for your translator (see exhibit D-page 8) and allow us, once and for all, to put this interference problem behind us without any Commission intervention. I hope, Ray, that you and everyone at Saga is as enthused about this as we all are. As you will read, Stu is requesting that you keep him apprised of your progress within the next two weeks. I, too, would appreciate a courtesy copy of anything sent to him. Meantime, I appreciate your patience with us as we prepared this report.

Sincerely,

Jeff

Jeff Fisher
President & General Manager
Northeast Communications Corporation

WFTN / WSCY / WPNH

GRAHAM BROCK, INC.

BROADCAST TECHNICAL CONSULTANTS

REPORT ON PROGRESS TO ELIMINATE INTERFERENCE
NORTHEAST COMMUNICATIONS CORPORATION
FRANKLIN, NEW HAMPSHIRE
January 2014

TECHNICAL EXHIBIT

Copyright 2014

REPORT ON PROGRESS TO ELIMINATE INTERFERENCE
NORTHEAST COMMUNICATIONS CORPORATION
FRANKLIN, NEW HAMPSHIRE
January 2014

This Technical Report is prepared on behalf of Northeast Communications Corporation (“Northeast”). Northeast is the licensee of FM broadcast station WFTN-FM, Channel 231A, Franklin, New Hampshire. WFTN-FM is receiving interference from FM translator station W231BR, Manchester, New Hampshire in a regularly listened to area in Concord, New Hampshire. W231BR is licensed to Saga Communications of New England, LLC (“Saga”) and operates as a fill-in translator that re-broadcasts the HD signal of WZID (FM), Channel 239B, Manchester, New Hampshire.

We note, after considerable effort to coordinate with Saga, Northeast is still receiving unacceptable interference to its signal in the Concord, New Hampshire area. We also note that Saga agreed that interference to WFTN existed and has taken some steps to attempt to eliminate the interference. In previous meetings it was determined that Saga was not interested in service to the Concord area with this translator since service is adequately provided to the area by another FM translator, W276BJ, which is licensed to serve Concord.

We note the physical location of W231BR delivers a line-of-sight signal into the Concord Market. Even with efforts made by Saga to eliminate interference to WFTN-FM, interference remains. It is our opinion that only a W231BR relocation to a site that does not provide a line-of-sight path into Concord will be an acceptable solution to the problem. Northeast has conducted a review of possible existing tower locations in Manchester. While several towers are located in

the Manchester area, we do not presume to narrow the options for relocation of W231BR, and we have not been in contact with the tower owners. Therefore, no registered tower site was identified.

We examined the option of locating on a building top in Manchester proper and using a non-directional antenna, which would provide exceptional service to the Manchester Community, while minimizing interference to WFTN-FM and eliminating the line-of-sight problem. With that in mind, a site on top of the Gill Stadium press box was selected as an example. Exhibit A is a map showing that the projected coverage of W231BR, as suggested. From this location a 54 dBu contour is provided over the entire Manchester Community, with service to 157,064 persons (2010 Census).

We further note that Manchester is located within a valley area surrounded by taller hills, primarily to the north toward WFTN-FM and Concord. Relocation to this or a similar site would protect the WFTN-FM signal in Manchester from line-of-sight co-channel interference, while achieving the desired goal of delivering the Saga signal to the Manchester area. Exhibit B is a coverage map using Longley-Rice contour predictions that shows what the actual terrain influenced coverage would be from this site. Exhibit C is a Delorme X-Map that depicts the Manchester area with terrain shadowing demonstrating this topographic feature. Of course, other locations within the Manchester area would also provide excellent W231BR service to Manchester, while minimizing interference to WFTN-FM in Concord. We also note that Channel 230 (93.9 MHz) could also be used as an alternate frequency, within the limits of Manchester, which would serve to further protect WFTN-FM from interference (Exhibit D).

Until appropriate changes can be made, Northeast requests that Saga further reduce the power of W231BR due to interference to the WFTN-FM signal in Concord. Northeast has taken a cooperative approach to this issue and has not filed a formal complaint to the Commission in the hopes that Saga could eliminate the interference. However, regardless of measures taken by Saga to attempt to eliminate the interference, those measures have not been entirely successful. Realizing this is a difficult situation for both Saga and Northeast and that time is of the essence, Northeast requests a reply from Saga to this report within 14 days.

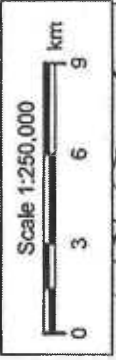
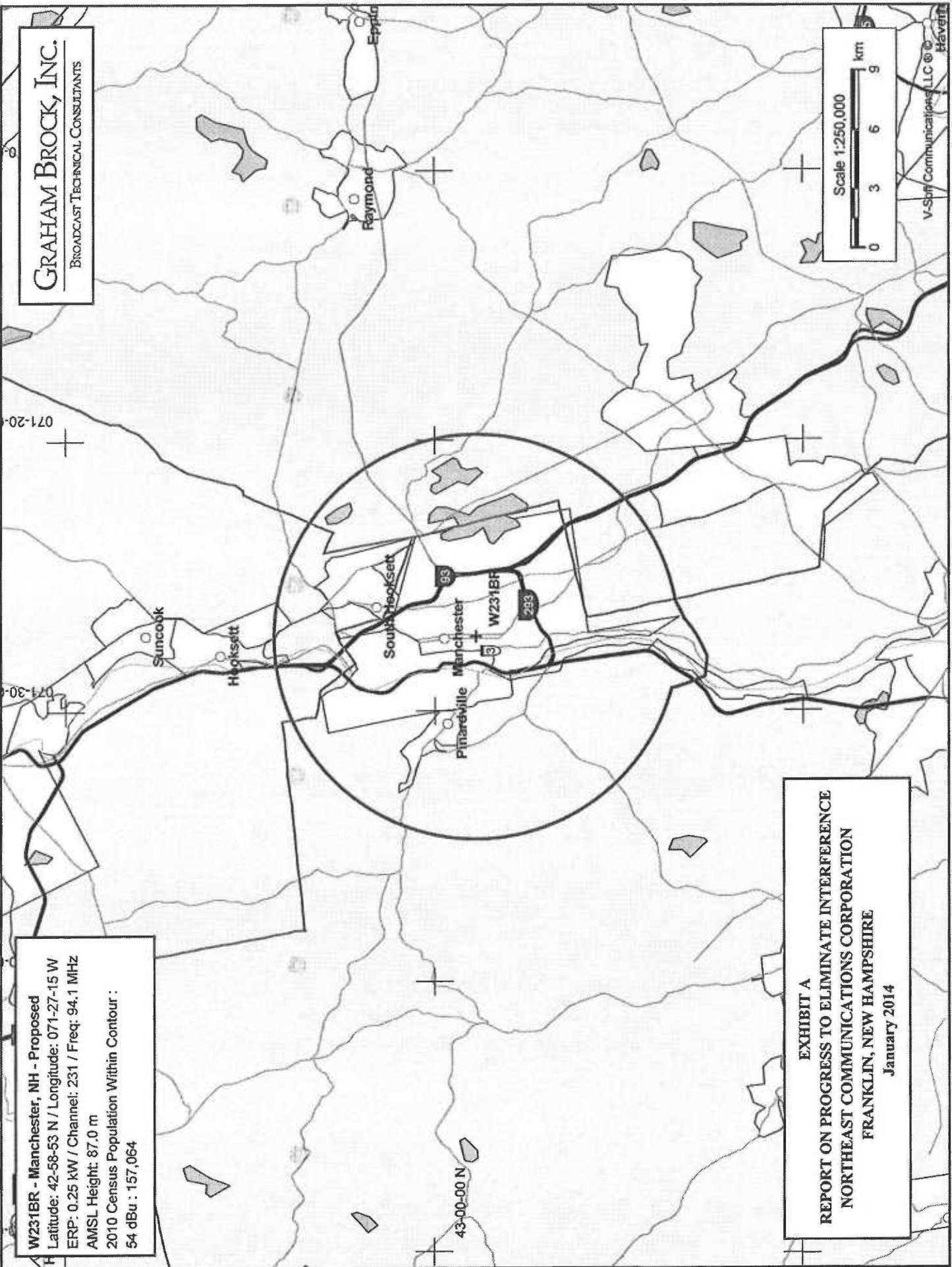
We have tried to be as accurate as possible in the preparation of this report. Should there be any questions concerning the information contained herein, we welcome the opportunity to discuss the matter by phone (912) 638-8028.

GRAHAM BROCK, INC.
BROADCAST TECHNICAL CONSULTANTS

071-20

071-30

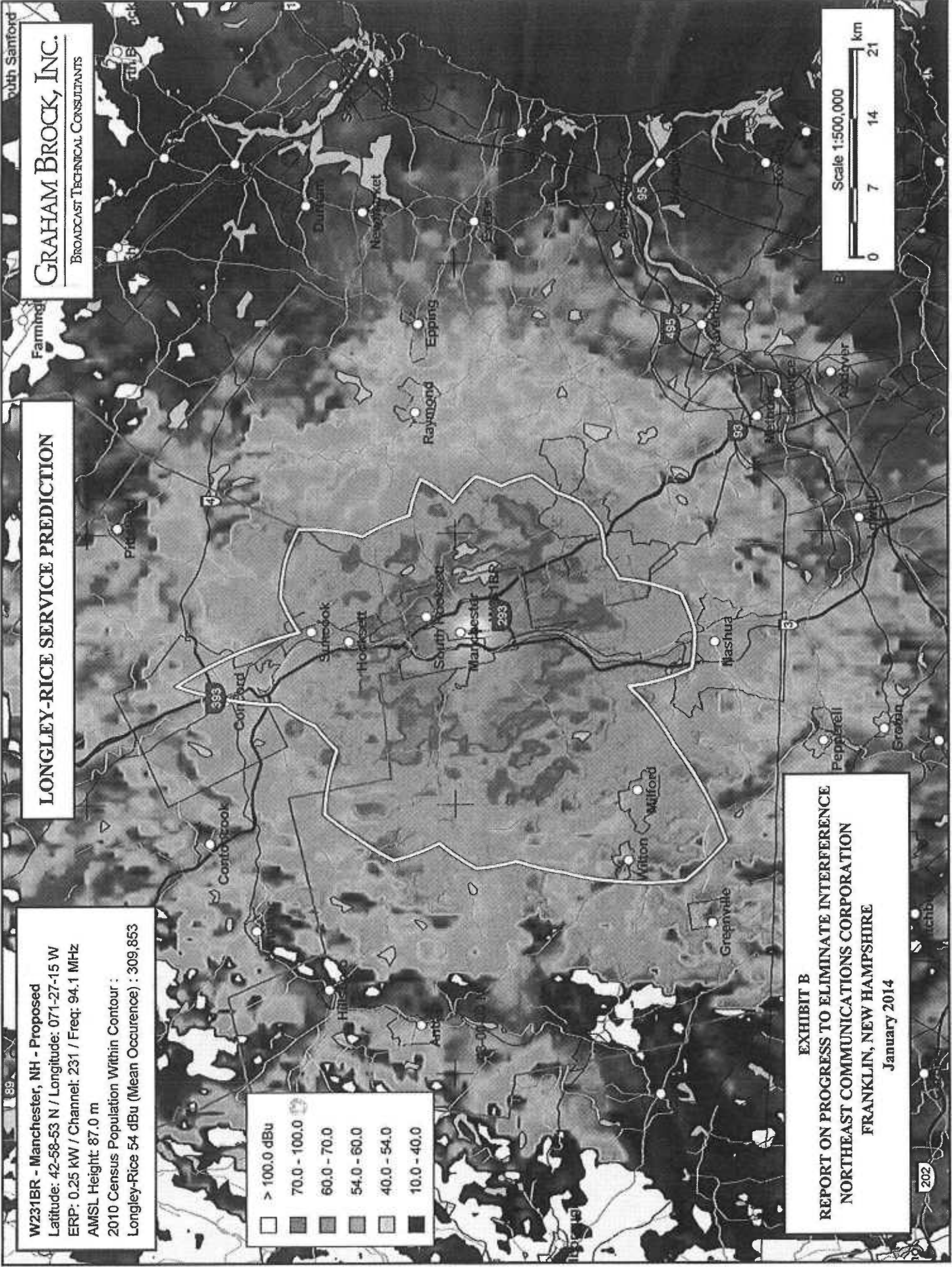
W231BR - Manchester, NH - Proposed
Latitude: 42-58-53 N / Longitude: 071-27-15 W
ERP: 0.25 kW / Channel: 231 / Freq: 94.1 MHz
AMSL Height: 87.0 m
2010 Census Population Within Contour :
54 dBu : 157,064



V-Soft Communications LLC ©
Haveit

EXHIBIT A
REPORT ON PROGRESS TO ELIMINATE INTERFERENCE
NORTHEAST COMMUNICATIONS CORPORATION
FRANKLIN, NEW HAMPSHIRE
January 2014

43-00-00 N



GRAHAM BROCK, INC.
 BROADCAST TECHNICAL CONSULTANTS

LONGLEY-RICE SERVICE PREDICTION

W231BR - Manchester, NH - Proposed
 Latitude: 42-58-53 N / Longitude: 071-27-15 W
 ERP: 0.25 kW / Channel: 231 / Freq: 94.1 MHz
 AMSL Height: 87.0 m
 2010 Census Population Within Contour :
 Longley-Rice 54 dBu (Mean Occurrence) : 309,853

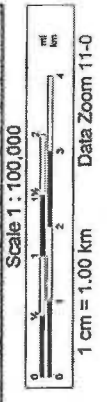
-
- 70.0 - 100.0
- 60.0 - 70.0
- 54.0 - 60.0
- 40.0 - 54.0
- 10.0 - 40.0

Scale 1:500,000
 0 7 14 21 km

EXHIBIT B
REPORT ON PROGRESS TO ELIMINATE INTERFERENCE
NORTHEAST COMMUNICATIONS CORPORATION
FRANKLIN, NEW HAMPSHIRE
 January 2014



EXHIBIT C
REPORT ON PROGRESS TO ELIMINATE INTERFERENCE
NORTHEAST COMMUNICATIONS CORPORATION
FRANKLIN, NEW HAMPSHIRE
January 2014



**REPORT ON PROGRESS TO ELIMINATE INTERFERENCE
NORTHEAST COMMUNICATIONS CORPORATION
FRANKLIN, NEW HAMPSHIRE
January 2014**

EXHIBIT D

CH	CALL	TYPE	ANT STATE	AZI	DIST	LAT. LANG.	Pwr (kW) HAAT (M)	INT (km) COR (M)	PRO (km) LICENSEE	*IN* *OUT*
231D	W231BR	LIC DC	NH	271.5	11.00	42 59 02.0 71 35 22.0	0.250	35.3	23.5	-31.3* -22.6*
	Manchester			91.4	BMLFT20131112BVT			411	Saga Communications Of New	
229B	WEEI-FM	LIC CX	MA	142.5	62.92	42 31 53.0 70 59 12.0	34.000	74.3	50.0	-18.4*< 2.7
	Lawrence			322.8	BLH20090904ACK		178	202	Entercom License, Llc	
231A	WFTN-FM	LIC ZC	NH	347.4	56.02	43 28 23.0 71 36 20.0	6.000	40.9	26.6	8.0 19.3
	Franklin			167.3	BMLH20030611AAP		100	298	Northeast Communications C	
230A	WWOD	LIC ZEX	VT	315.5	104.34	43 38 49.0 72 21 49.0	3.100	83.6	28.6	13.7 52.0
	Woodstock			134.9	BLH20101115DQH		139	399	Great Eastern Radio, Llc	
230A	WRSI	LIC CN	MA	242.2	105.43	42 32 01.0 72 35 34.0	2.500	81.9	28.0	16.5 53.6
	Turners Falls			61.4	BLH19951018KB		109	284	Saga Communications Of Ne	
227A	WNHW	LIC CN	NH	350.4	46.95	43 23 52.0 71 33 03.0	0.300	1.2	24.5	38.6 21.4
	Belmont			170.4	BLH19940510KA		311	504	Wbin Media Co., Inc.	
233B	WJMN	LIC CX	MA	165.8	77.24	42 18 27.0 71 13 27.0	9.200	5.1	52.6	65.1 23.5
	Boston			346.0	BLH20031201AWA		353	394	Amfm Radio Licenses, L.L.C	
232D	W232AJ	LIC ?CN	NH	248.6	37.39	42 51 28.0 71 52 53.0	0.005	0.2	10.1	30.2 25.0
	Greenville, Etc.			68.3	BLFT19881108TI		416	713	Harvest Broadcasting Assn.	

Terrain database is FCC NGDC 30 Sec, R= 73.215 qualifying spacings or FCC minimum spacings in KM, M= Margin in KM
 Contour distances are on direct line to and from reference station. Reference Zone= - Zone 1, Co to 3rd adjacent.
 Ant Column: (D= DA Standard, Z= DA 73.215, N= Not DA 73.215, _= Omni), Polarization (C,H,V,E), Beamtilt(Y,N,X)
 "*"affixed to 'IN' or 'OUT' values = site inside protected contour.
 << = Station meets FCC minimum distance spacing for its class.
 < = Contour Overlap

CH# 230D - 93.9 MHz, Pwr= 0.25 kW, HAAT= -21.3 M, COR= 87 M
 Average Protected F(50-50)= 7.1 km
 Omni-directional
 DISPLAY DATES
 DATA 01-09-14
 SEARCH 01-09-14

AFFIDAVIT AND QUALIFICATIONS OF CONSULTANT

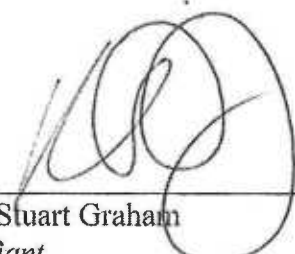
State of Georgia)
St. Simons Island) ss:
County of Glynn)

R. STUART GRAHAM, being duly sworn, deposes and says that he is an officer of Graham Brock, Inc. Graham Brock has been engaged by Northeast Communications Corporation to prepare the attached Technical Exhibit.

His qualifications are a matter of record before the Federal Communications Commission. He has been active in Broadcast Engineering since 1979.

The attached report was either prepared by him or under his direction and all material and exhibits attached hereto are believed to be true and correct.

This the 9th day of January 2014.



R. Stuart Graham
Affiant

*Sworn to and subscribed before me
this the 9th day of January 2014*

*Notary Public, State of Georgia
My Commission Expires: March 14, 2015*

From: "Fred Caruso" <fred@mix941fm.com>
Subject: signal comments
Date: Wed, August 28, 2013 5:30 pm
To: fred@mix941fm.com

TerriandTony Segalini I am unable to listen anymore from NHMS to 393
about an hour ago · Like

Pam McDonald Could they make it so we can listen on our iPods /iPhones ?
We use tuneIn Radio and Mix is the only one we can't get on them !!
about an hour ago via mobile · Like

Tina Manning We were having trouble getting reception in concord by taco
bell, and all the way up past the speedway other night. Kinda bummed us
out.

Thaisae Libby I've been having trouble all over the state lately
about an hour ago via mobile · Like

Heidi Swanson Weymouth I losing the signal in the Heights area of Concord
about an hour ago · Like

DJ-Chris Porter Your signal hasn't been good to the south in years! I used
to be able to get you guys up near the MA border. The problem is caused by
a translator licensed to Manchester (W231BR). They recently upgraded and
moved their transmitter to a mountain overlooking the city to give them
commercial grade coverage.
about an hour ago via mobile · Like

Colleen Krochmal I've lost y'all in Epsom
55 minutes ago via mobile · Like

Ashley Dupont Gilford by Walmart area blanks out
53 minutes ago via mobile · Like

Kim Welch Loudon road and 393
30 minutes ago via mobile · Like

Sarah GJ Since wzid 103.1 started broadcasting it has made it hard to hear
your station in concord, in I93 there is a spot where 94.1 and 103.1
battle it out, then your station is gone and its the wzid station.
24 minutes ago via mobile · Like

Kathy McHugh Kendrick I lose it from the Speedway all the way to LRGA. We
no longer get good reception in the Gym.
23 minutes ago · Like

Samantha Janos Patchy service in contoocook and on route 3 toward Franklin
... Even having issues school street Franklin
21 minutes ago via mobile · Like

Tina Lynne Boulet Between Concord & Manchester it fades
15 minutes ago via mobile · Like

Tiffany DeCarolus Hardly comes in at all on route 11 from Alton to gilford

From: "Fred Caruso" <fred@mix941fm.com>
Subject: signal comments 2
Date: Wed, August 28, 2013 5:47 pm
To: fred@mix941fm.com

Tina Lynne Boulet Between Concord & Manchester it fades
33 minutes ago via mobile · Like

Tiffany DeCarolis Hardly comes in at all on route 11 from Alton to gilford
32 minutes ago via mobile · Like

Denise Frost Heath Exit 16 in concord through the city fades in and out!
11 minutes ago via mobile · Like

Jacki Drew I have been having issues I cannot listen :-(live in Loudon
5 minutes ago via mobile · Like

Denise Carole Bodwell Yes exit 16, then on east side drive, to hazen
drive. Cannot access the radio station at all inside buildings on hazen
drive
4 minutes ago · Like

Kimberly Shedd Benoit I live in Gilmanton & work in Concord on route 106
right by Makris station barely comes in when in my car
2 minutes ago via mobile · Like

Paige Noelle From the race track to the Beanstalk on 106 and then again on
393 I have to switch stations

Fred Caruso
Program Director
Mix 94.1fm/WFTN-FM
1-888-941-1069
fred@mix941fm.com

ATTACHMENT F

-----Original Message-----

From: Jeff Fisher [mailto:jefff@mix941fm.com]

Sent: Tuesday, March 18, 2014 4:03 PM

To: 'Ray Garon'

Cc: 'gsmithwick@fccworld.com'; Erwin G. Krasnow (ekrasnow@gsblaw.com); 'Stu Graham'; 'dgehman@radiotv.com'

Subject: Reply to Ray Garon

Ray:

As you are no doubt aware, On several occasions Stu Graham had asked Gary Smithwick to discontinue the operation of W231BR because of the harmful interference your translator was causing our full power FM station. While Mr. Smithwick repeatedly told us how the FCC rules and regulations work re: resolution of translator interference, he himself never subscribed to the true spirit of the rules and regulations. To wit, the FCC rules and regulations clearly provide that the operation of an FM translator station that causes harmful interference to a full-service station "shall be suspended and shall not be resumed until the interference is eliminated." Consistent with the letter and spirit of the FCC's rules, he should have advised you to shut the translator down until definitive steps had been taken to eliminate the interference. As you probably know, the FCC does give translators that cause interference the right to make short test transmissions during suspended operation to determine the efficacy of any remedial measures that you undertake. I can certainly appreciate your reluctance to discontinue operations because of the audience you were serving. I only wish you had been that sensitive to the audience we were serving, and, most importantly, to our business during the many months this has gone on.

That notwithstanding, I want to express my appreciation for the time and effort you have expended on finding a solution to the interference problem. It now appears that you have largely eliminated the harmful interference that W231BR was causing WFTN-FM, especially throughout the greater Concord area. In your e-mail of February 26, 2014, you acknowledged, and we agree, that the remedial measures you have taken are NOT perfect (a good deal of interference still exists on Pleasant Street as you approach Concord Hospital as well as around the hospital campus and we would still like to see that addressed). And, while we are not required to accept any interference whatsoever from W231BR, we recognize that you have cleaned up the problem through the combination of 1) your vastly reduced power and, 2) your highly directional antenna.

In light of the remedial measures you have taken, we are of the view that the current level of interference is acceptable, provided that the STA with which you now operate become the permanent parameters within which you will

continue to operate W231BR. The current operation of W231BR, however, must be "carved in stone" as we will accept nothing less. Please know that we will continue to monitor your translator closely from a number of monitoring points at different locations. Should anything change or be changed causing any interference to resurface, we will aggressively take whatever steps necessary to protect the integrity of WFTN-FM's signal. That said, Ray, I too am glad that we were able to resolve the harmful interference problem without any FCC intervention.

Jeff

Jeff Fisher
President & General Manager
Northeast Communications Corporation

WFTN / WSCY / WPNH

ATTACHMENT G

From: Keith Hall [<mailto:konigmidas@hotmail.com>]

Sent: Wednesday, April 16, 2014 10:13 AM

To: Jeffrey Levitan Levitan

Subject: RE: MIX/94.1FM Interference

Dear Mr Levitan,

You may recall I e-mailed you sometime back complaining that another station was interfering With MIX-94.1 on route 106 in the Concord area. You were nice enough to write me back and explain You were working on the problem. I just wanted to let you know the other station is back interfering With your station. WFTN was loud and clear for a while but the noise from the other station seems to be back Making it hard to listen to MIX. The last several times I was going to Wal-Mart on Loudon road in Concord, The other station came over MIX on Loudon Road and in the parking lot at Wal-Mart. I hope you can get this problem fixed soon.

Thank you,

Keith Hall

POB 23

Laconia, NH 02347

175 Pickeral Pond Road
Laconia, NH

-----Original Message-----

From: "JD" <thejadetigers@yahoo.com>
Sent: Monday, April 14, 2014 12:26pm
To: "fred@mix941fm.com" <fred@mix941fm.com>
Subject: Signal Strength

Good Afternoon Fred,

I know I have called you a few times over the last year regarding this issue and I am sorry it has taken me so long to write you with my concerns.

I noticed that sometime during the early summer last year that several places in concord seemed to have either static or another station bleeding over in areas it never had before. It seemed to have cleared up for a while but I noticed in the past couple of weeks interference was coming back. I can drive throughout Concord and listen to Mix but sometimes another station peeks through on the same frequency.

During my afternoon errands around exit 16, I noticed that sitting at a crossroad every day allowed me to listen to two separate radio transmissions yours and another one I was unfamiliar with. It was switching between the two every five feet or so as I would get closer to my turn.

I also noticed that this radio station was taking over as far north on 93 as exit 18 during my morning commute on days I stayed up north.

I thought you should know and I hope this gets resolved soon.

Best of luck!

Jenn Dotson
603-369-0532

Sent from my iPhone

From: fred@mix941fm.com [mailto:fred@mix941fm.com]
Sent: Tuesday, April 22, 2014 9:44 AM
To: Jeff Fisher; Jeff Levitan
Cc: Fred Caruso
Subject: FW: It's BAD today!

Good morning Jeff/Jeff,

I received this email this morning from the gal who sent in an email last week.

Thanks,
Fred

Fred Caruso
Operations Director
Northeast Communications Corp.
1-888-941-1069
fred@mix941fm.com



-----Original Message-----

From: "Jenn Dotson" <jdotsonmail@gmail.com>
Sent: Tuesday, April 22, 2014 7:55am
To: "fred@mix941fm.com" <fred@mix941fm.com>
Subject: It's BAD today!

From just north of exit 17 all the way to exit 15w I couldn't even understand you. I missed the question of the day, that's how much interference there was. Also cutting out to another station off and on over here on the heights near where I work (53 regional drive concord). Missing the question of the day again because another announcer cutting through. Now that I parked, I can only hear the other radio station.

I want my station back! Lol.

Jenn Dotson
54 Church St #3
Concord NH 03301
603-369-0532
Sent from my iPhone

From: Harry Harris [mailto:karkraft1@gmail.com]
Sent: Wednesday, April 23, 2014 8:42 PM
To: Jeffrey Levitan
Subject: Re: info

Jeffrey Levitan - VP/GSM
Mix/94.1

As a long time listener and sponsor of your radio station, I've enjoyed years of great listening as well as the ability of your station to drive a great deal of business to my door.. Thanks so much..

Not long ago I mentioned to you that I was in Concord shopping at Barons on Loudon Road when I could barely here your station while it was playing my ad !!!!! I heard something that sounded like "Greatest Hits" but even my wife said it wasn't you !!!!! On we went for a coffee at Starbucks down the road and the same thing !!!!

I contacted you and you assured me that you would look into it and get back to me. When I bought your station Mix 94.1 in the past, I was always assured you would have a strong presence in the Concord area.

As always you came through and all was fine, for a while..... My last trip through this area has brought the same problem again !!!!!!

Needless to say "I'm not happy !!!!!!!!"

If you are unable to resolve this problem quickly, I'll have to revisit our future options in our advertising relationship.

Jeff.... Get of your ass and fix this now !!!!!!!!!!!!!!!!!!!!!!!!!!!!!!! Don't give me any BULLSHIT about signal strength, overlap, tower height or the FCC !!!!!!

Regards,
H. Harris King III CEO-CFO President
Kip & Joe's Inc

1429 Lakeshore Road
Gilford, NH

From: Brian Burris [<mailto:b.brian@comcast.net>]
Sent: Friday, April 25, 2014 9:14 AM
To: jefflevitan@metrocast.net
Subject: Radio Reception

Dear Mr. Levitan,

I have been an avid listener of MIX 94.1 FM since the early 1990s. Back then, I found your station by way of the strong signal and great reception, and after tuning in became a big fan.

Several months ago, maybe longer, I began to notice a decline in the reception quality in several parts of Concord, most noticeably the East Side Drive and Loudon Road areas. As I was driving along, another station seemed to take over the 94.1 signal. I wrote to your station about this, wondering if there was a technical issue that could improve the situation. Since the problem seemed to go away shortly after I wrote, I assumed that whatever the glitch was had been corrected.

I am writing today to let you know that the problem has returned. It seems to be most noticeable between exits 17 and 15 on Interstate 93 (these are the exits I would take to and from my home, so I am trying to listen here often), and again on certain areas of Loudon Road (commonly referred to as "The Heights"). If it is of any help to your technical crew, your station disappeared entirely near the movie theatre up there. I can't identify the other station that is coming in on this signal, as out of frustration I just change the station when this erratic reception occurs.

I hope that you take my letter as one of constructive feedback, not as a complaint against MIX 94.1 FM. I truly enjoy your station, but with the current situation my enjoyment can sometimes be fleeting.

Please feel free to write or phone if you would like to discuss. Thank you for your concern.

Sincerely,
Brian Burris

8 Chicory Court

Concord, N.H.

603-224-3742

From: Michael Caswell [<mailto:michaeljcaswell@gmail.com>]

Sent: Friday, April 25, 2014 9:57 AM

To: jefff@mix941fm.com

Subject: 94.1 Signal

Hi Jeff,

My name is Michael J. Caswell and I am an avid listener in Concord, NH. I have noticed that 94.1 isn't coming in on my radio very well anymore in Concord. I have been getting a mixed signal and interference on Loudon Rd. and near Concord Hospital (Pleasant St.). My family and I really enjoy your stations and were wondering if there was a way to prevent the interference. As a radio novice it seems that another station is impeding on your airways and preventing me from listening to my favorite station.

Your time is appreciated in this matter,

Michael Caswell
18 Prospect St.
Concord, NH 03301

-----Original Message-----

From: "Stephanie E. White" <SWhite@banknh.com>
Sent: Tuesday, April 29, 2014 10:20am
To: "'fred@mix941fm.com'" <fred@mix941fm.com>
Subject: problem with station

Good morning Fred,

I know awhile back there was an issue with the station having lots of static and noise. I know it was fixed but it seems the problem is back. I work and live in Concord and the station does not come in clear anymore. I just wanted to make sure that you were aware and to see if you had any ideas when this would be fixed?

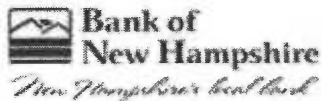
Thanks for your help.

Stephanie White | Bank Services Representative

Bank of New Hampshire | 11 Triangle Park Drive | Concord | NH | 03301

Office: 603-228-6101 | Fax: 603-228-6280 | www.BankNH.com

[Click here to find us on Facebook!](#)



DISCLAIMER:

The information contained in this electronic communication is intended to be sent only to the stated recipient and may contain information that is CONFIDENTIAL, privileged or otherwise protected from disclosure under applicable law. If the reader of this message is not the intended recipient or the intended recipient's agent, you are hereby notified that any dissemination, distribution or copying of the information is strictly prohibited. If you are not the intended recipient, please contact the sender and delete all copies.

ATTACHMENT H

CERTIFICATE OF SERVICE

I, Yvette Graves, hereby certify that on April 30, 2014, copies of the foregoing Complaint were sent via First Class Mail, postage pre-paid (unless otherwise stated), to the following:

Mr. James Bradshaw, Deputy Chief**
Audio Division, Media Bureau
Federal Communications Commission
445 12th Street, N.W.
Washington, DC 20554

Mr. Robert Gates**
Audio Division, Media Bureau
Federal Communications Commission
445 12th Street, N.W.
Washington, DC 20554

Gary S. Smithwick, Esq.
Smithwick & Belendiuk, PC
5028 Wisconsin Avenue, NW
Suite 301
Washington, DC 20016


Yvette Graves

**Via e-mail