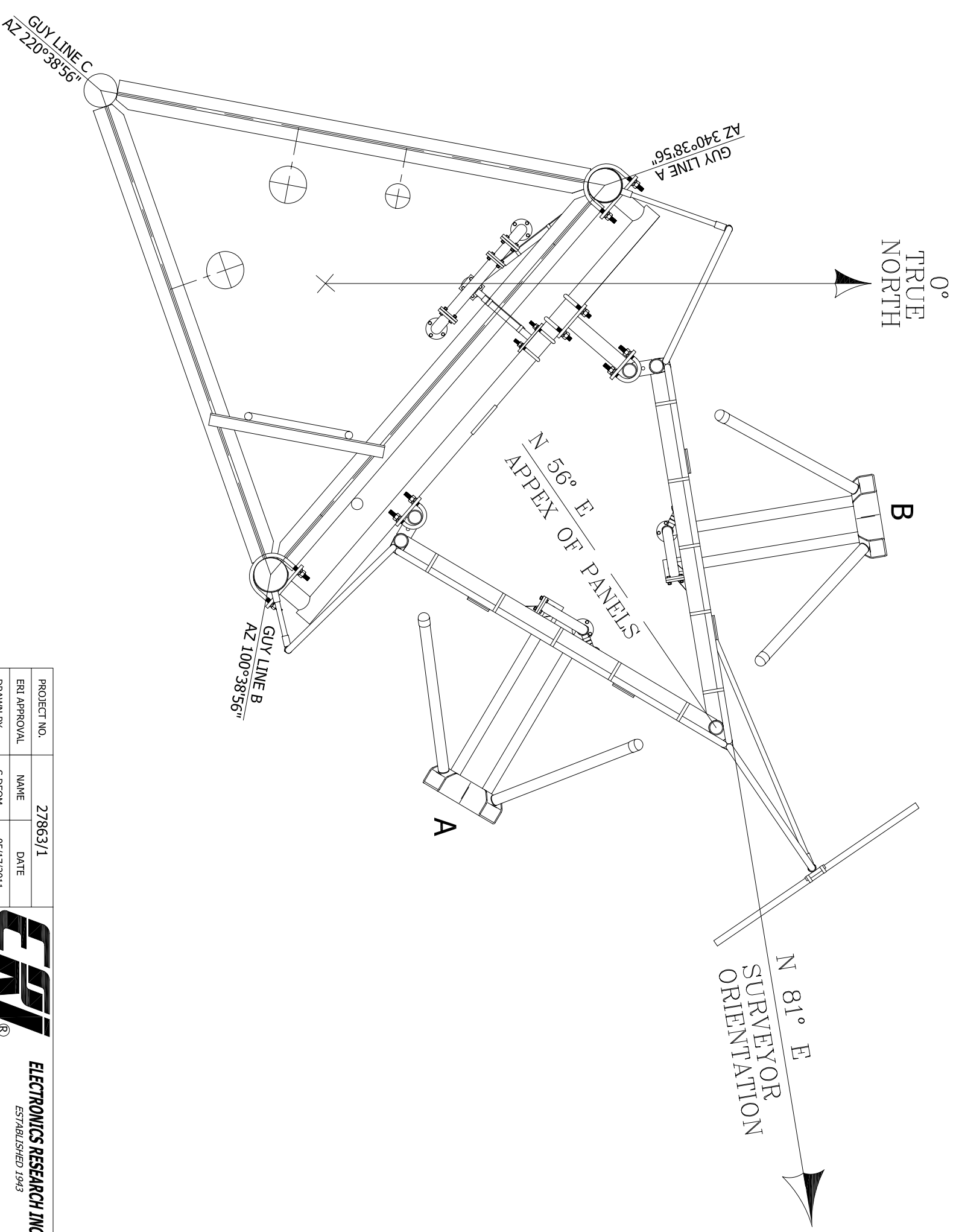


4

3

2

1



0°
TRUE
NORTH

N 81° E
SURVEYOR
ORIENTATION

N 56° E
APEX OF PANELS

GUY LINE C
AZ 220°38'56"

GUY LINE B
AZ 100°38'56"



This document/drawing contains information considered confidential by Electronics Research, Inc. (ERI). This information is disclosed on a commercial basis and only authorized for use in the installation, operation, and maintenance of ERI tower and antenna equipment, as appropriate. Reproduction, transmission, disclosure of ERI's confidential information, without the express written consent of ERI, is strictly prohibited. UNAUTHORIZED REPRODUCTION, REPRODUCTION, OR DISCLOSURE OF THIS INFORMATION IS A VIOLATION OF FEDERAL LAW.
COPYRIGHT © 2010 ERI, ELECTRONICS RESEARCH INC.

THIRD ANGLE PROJECTION

MATERIAL

FINISH

TOLERANCES
OVERALL-NOT CUMULATIVE
UNLESS OTHERWISE SPECIFIED,
ALL DIMENSIONS ARE IN INCHES
AND APPLICABLE AT 20°C (68°F)
INTERPRET DIMENSIONS AND TOLERANCES
PER ASME Y14.5M-1994

1 PLACE DECIMAL ± .1
2 PLACE DECIMAL ± .03
3 PLACE DECIMAL ± .010
ANGULAR ± .5°
FRACTIONAL ± 1/16"

PROJECT NO.	27863/1	
ERI APPROVAL	NAME	DATE
DRAWN BY	S.DEOM	05/17/2011
DRAFTING		
DESIGN MGR.		
ENG.		
MANUF.		
EXT. APPROVAL		
COMPANY		
SUPERSEDES PART NO.		

		ELECTRONICS RESEARCH INC. ESTABLISHED 1943		7777 GARDNER RD. CHANDLER, IN 47610-9219 PHONE: (812) 925-6000 FAX: (812) 925-4030	
TITLE: SURVEYOR ORIENTATION					
WFD0 / 92.5 MHZ - JACKSONVILLE, FL					
1092-1CP-DA					
SIZE	GAGE CODE	DWG NO.	REV.		
B	OZNS1	IA27863-3	A		
SCALE:	1:16	WEIGHT:		SHEET:	

A

B

A

B